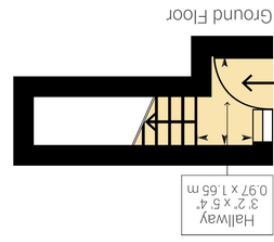
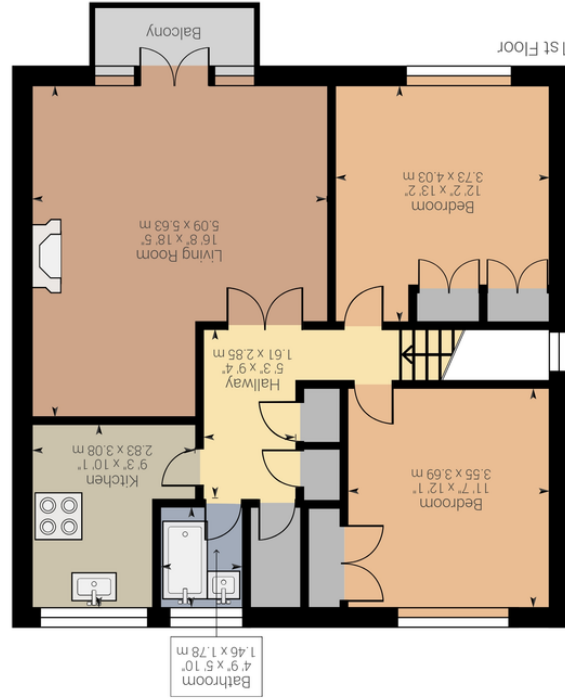


Powered by Giraffe360

Approximate net internal area: 853.32 sq ft / 79.28 m²
While every attempt has been made to ensure accuracy, all measurements are approximate.
not to scale. This floor plan is for illustrative purpose only and should be used as such by any prospective tenant or purchaser.



WILD OAKS, HA6 3NW

£450,000





This Stunning 2 bedroom first floor apartment situated in the heart of Northwood, the property benefits from being a moments walk from Northwood's High street with its array of shopping and leisure facilities including the Metropolitan Line Station. The property is situated in a delightful cul-de-sac and has been freshly redecorated through out. The property is available immediately and benefits from ample parking & private garage.

TENURE

Leasehold - 900 Years Remaining
Service Charge £1,360 Per Annum
Ground Rent - NIL

