

house.

PARTNERSHIP

Moving estate agency on



h.

THE OLD TOWN HALL

Bosham Lane

Bosham

Chichester PO18 8HY

An exceptional William & Mary house, beautifully restored and notable for its outstanding position overlooking the waters of Bosham Creek

- Grade II listed
- Drawing room and dining room
- Kitchen / family room and pantry
- Utility room, laundry room and stores
- Master bedroom with en suite dressing room and bathroom
- 3 en suite bedrooms with shower rooms
- Further bedroom, family bathroom and home office
- Parking and double garage with sail loft above
- Gardens with fabulous water views



h.



h.



h.



h.



properties perfectly presented

h.



h.



h.



h.



properties perfectly presented



h.



h.



properties perfectly presented



h.



h.



properties perfectly presented



h.

Approximate Gross Internal Area = 370.12 sq m / 3984 sq ft
 Approximate Gross outbuilding Area = 65.77 sq m / 708 sq ft
 Total = 435.90 sq m / 4692 sq ft

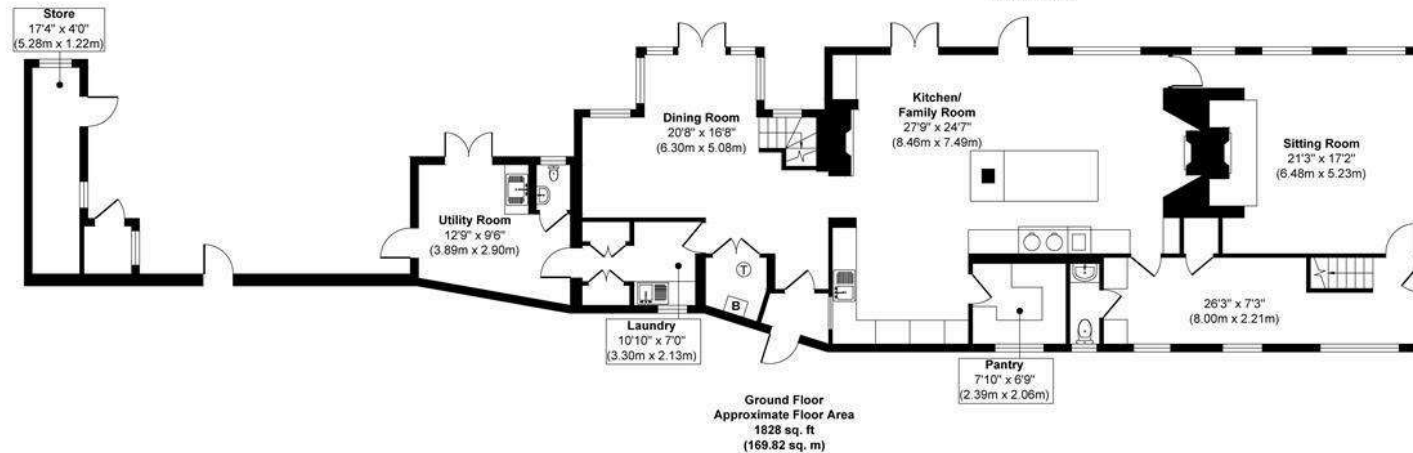
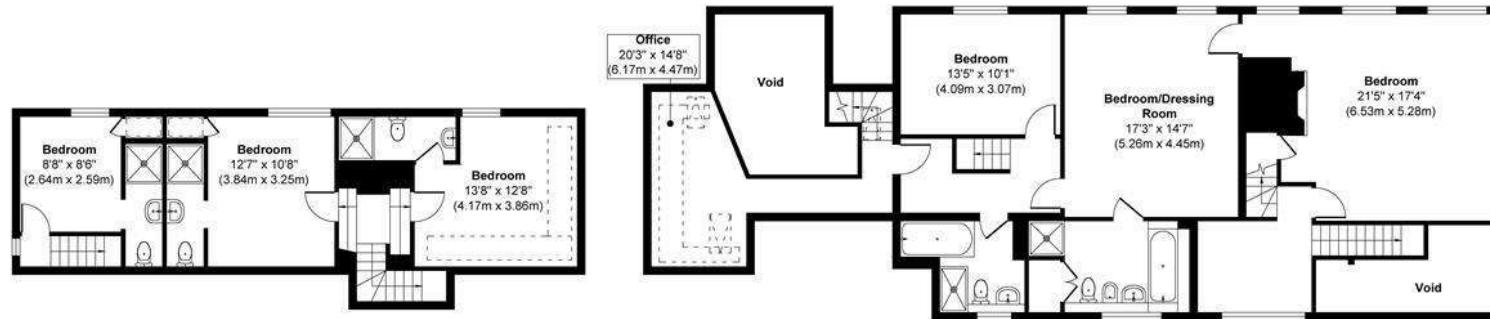
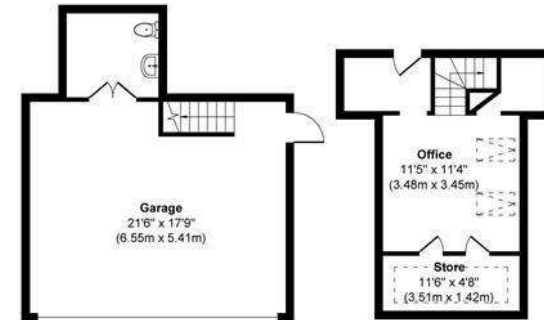


Illustration for identification purposes only, measurements are approximate, not to scale.

h.

HOUSE INFORMATION

Approximate total gross internal area: House 3,984 sq ft / 370.12 sq m; Garage / Sail Loft / Store 708 sq ft / 65.77 sq m. Total 4,692 sq ft / 435.9 sq m.

Services: All mains services. Gas-fired central heating.

Local authority: Chichester District Council.
Tel: 01243 785166.

Viewing: Strictly by appointment. Tel: 01243 717417.



t. 0800 917 0447

w. housepartnership.co.uk

f in p o