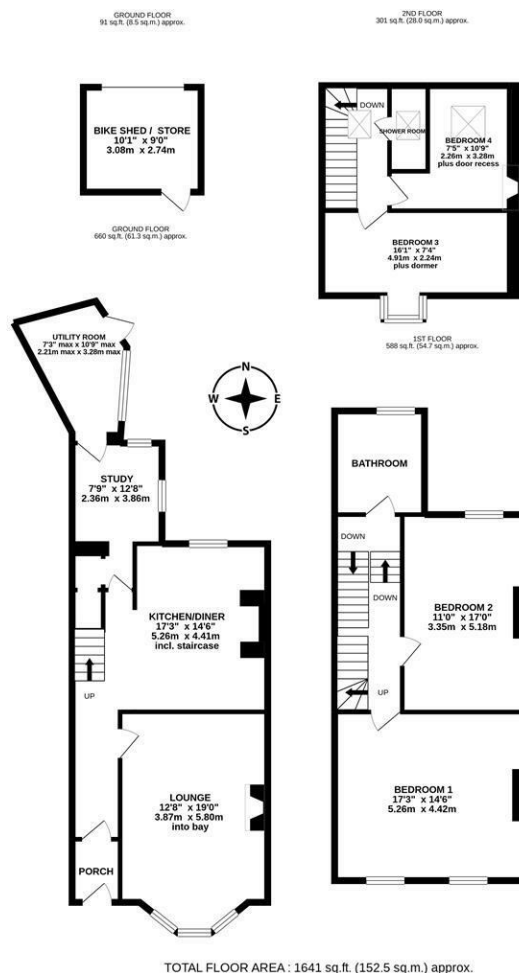




With over 1,600 Sq ft the internal accommodation briefly comprises: Entrance porch; entrance hall with staircase to the first floor; lounge with tall ceilings, feature fireplace, decorative ceiling and south facing bay; kitchen diner open to hallway with fitted wall and base units and work surfaces; study; utility room with a door leading out to the rear yard. The first floor boasts an impressive 17ft full-width bedroom with two south-facing sash windows; bedroom two, also a comfortable double measuring 17ft in length; family bathroom complete with four piece suite. To the second floor, the landing with skylight and access to shower room gives access to two further bedrooms; bedroom three another full-width bedroom with dormer window; bedroom four with Velux window. Externally, an enclosed courtyard to the rear, with walled boundaries, bike shed/store and access to the rear service lane. To the front, a delightful south-facing lawned garden with hedge and fenced boundaries with paved walk-way. With gas central heating and period features, an early viewing is essential.

Victorian Terrace | 1,641 Sq ft (152.5m2) | South Facing Gardens | Four Bedrooms | Three Storeys | Lounge | Kitchen Diner | Study | Utility Room | Full-Width Bedroom One | Family Bathroom | 2nd Floor Shower Room | Rear Courtyard with Bike Shed/Store | Period Features | Excellent Location | EPC Rating: Tbc



Whilst every attempt has been made to ensure the accuracy of the floorplan contained here, measurements of doors, windows, rooms and any other items are approximate and no responsibility is taken for any error, omission or mis-statement. This plan is for illustrative purposes only and should be used as such by any prospective purchaser. The services, systems and appliances shown have not been tested and no guarantee as to their operability or efficiency can be given.

Make with Metrorex ©2020



Offers Over £495,000

IMPORTANT NOTE: These particulars and the descriptions and measurements herein do not constitute representation and whilst every effort has been made to ensure accuracy, this cannot be guaranteed.

