

## 14 Fletcher Road

Beeston, Nottingham, NG9 2EL

£2,600 PCM

\*\* AVAILABLE FOR 2021/22 ACADEMIC YEAR \*\*

This impressive student property is located in the bright and popular town of Beeston.

The property comprises:

Large open modern open plan kitchen/ diner situated in the middle of the property.

All the bedrooms are large doubles with double beds, wardrobe, desk, chair, storage and televisions.

There are 3 bathrooms in the property with one located on the ground floor and 2 on the first. All are newly installed with shower, toilet and basin.

6 double bedrooms that come with all the required furniture such as a bed, desk and wardrobe

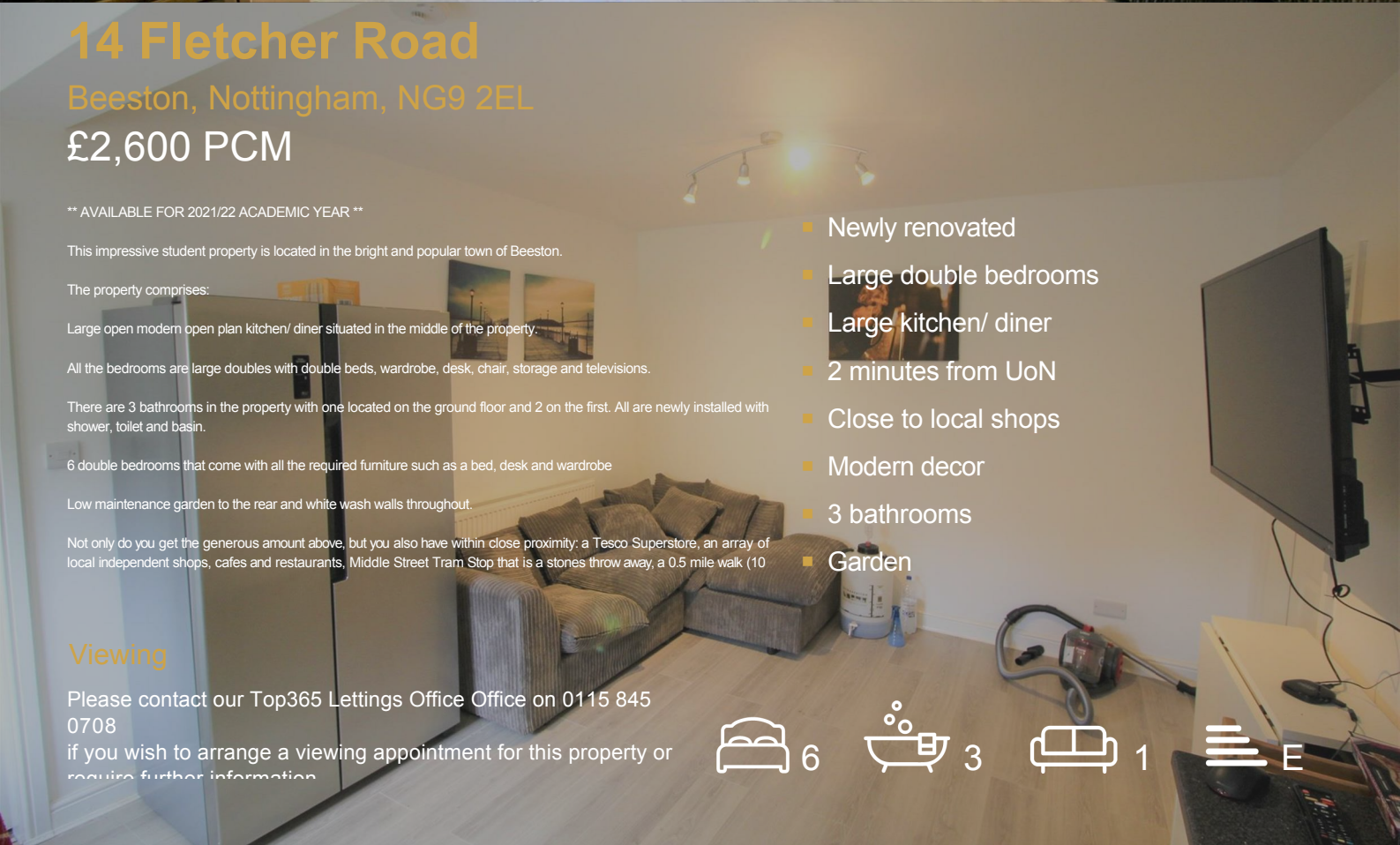
Low maintenance garden to the rear and white wash walls throughout.

Not only do you get the generous amount above, but you also have within close proximity: a Tesco Superstore, an array of local independent shops, cafes and restaurants, Middle Street Tram Stop that is a stones throw away, a 0.5 mile walk (10

- Newly renovated
- Large double bedrooms
- Large kitchen/ diner
- 2 minutes from UoN
- Close to local shops
- Modern decor
- 3 bathrooms
- Garden

### Viewing

Please contact our Top365 Lettings Office Office on 0115 845 0708 if you wish to arrange a viewing appointment for this property or require further information



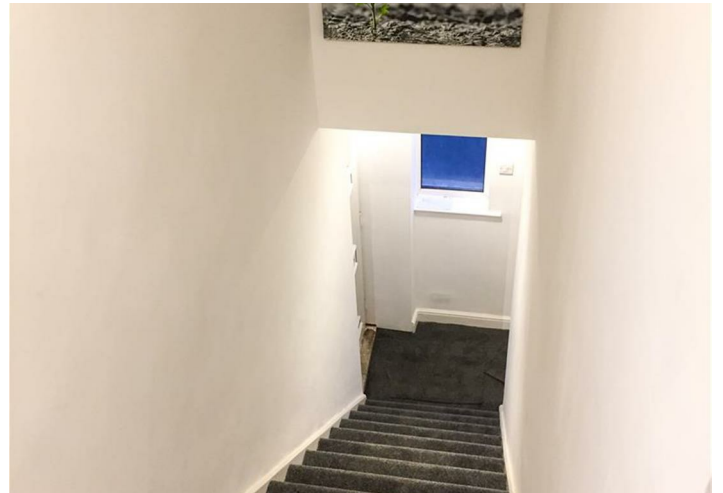
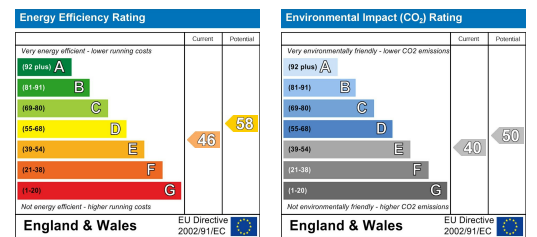
## Floor Plan



## Area Map



## Energy Efficiency Graph



These particulars, whilst believed to be accurate are set out as a general outline only for guidance and do not constitute any part of an offer or contract. Intending purchasers should not rely on them as statements of representation of fact, but must satisfy themselves by inspection or otherwise as to their accuracy. No person in this firm's employment has the authority to make or give any representation or warranty in respect of the property.

76 Derby Road | Nottingham | NG1 5FD

T: 0115 845 0708 M: 07758 520 126 E: enquiries@top365.co.uk W: www.top365.co.uk