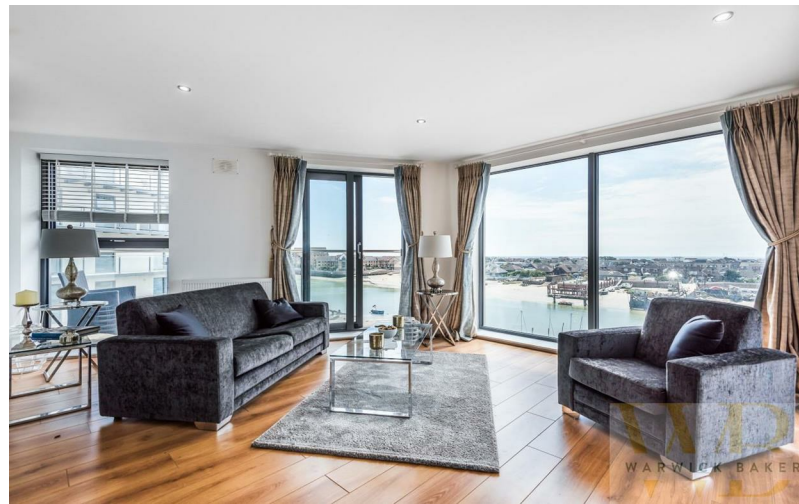




PHASE 2, MIDDLE TOWER, 73 Mariner Point Brighton Road |  
1 Sherborn Dr, Sea LD14 2DU



ESTATE AGENT



## PHASE 2, MIDDLE TOWER, 73 Mariner Point Brighton Road | | Shoreham-By-

£450,000

PHASE 2

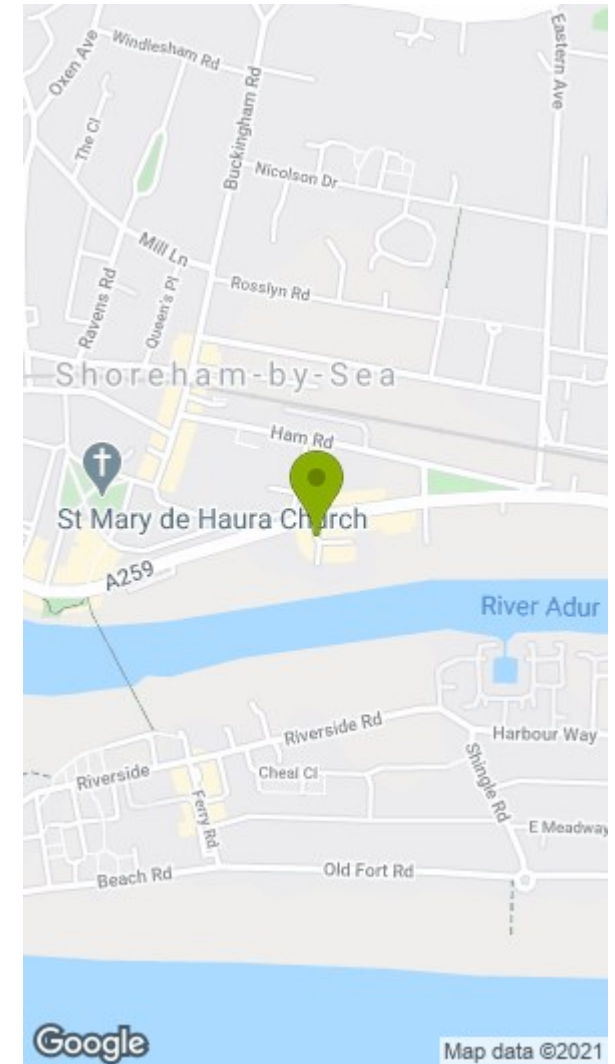
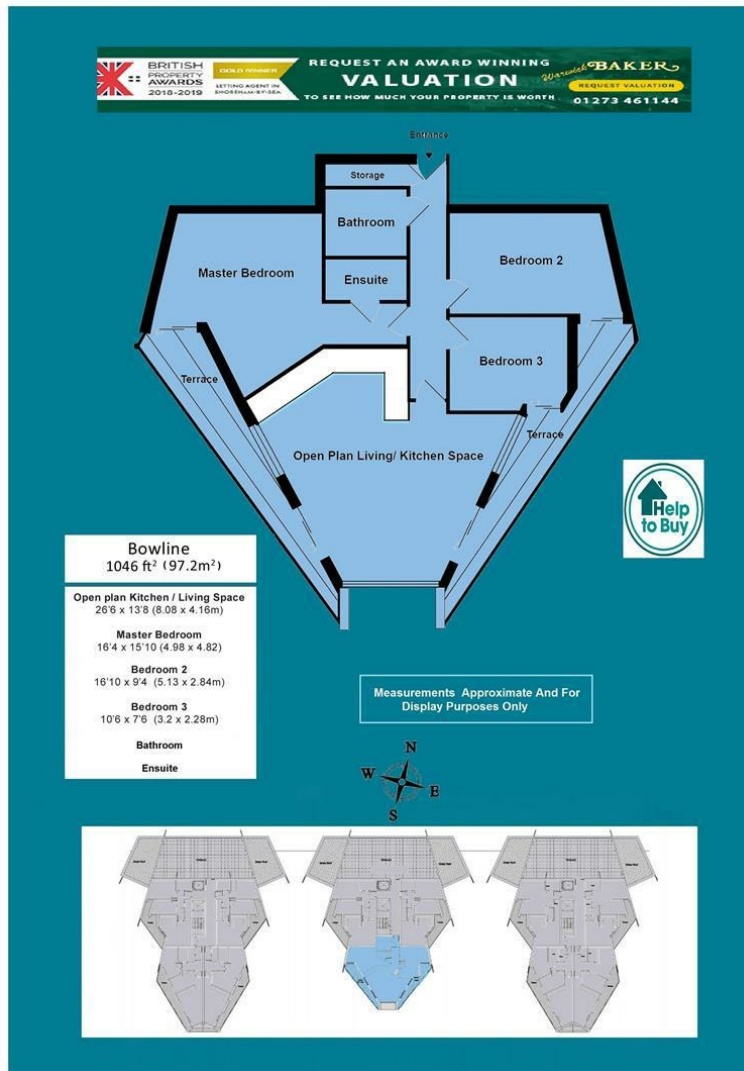
BOW LINE - FIRST FLOOR - 3 BEDROOMS

HELP TO BUY SCHEME AVAILABLE - CALL NOW FOR MORE DETAILS 01273 461144

\*\*\* PLEASE NOTE THE PHOTOS ARE OF THE SHOW FLAT AND MAY NOT BE THIS PARTICULAR PLOT \*\*\*

- LUXURY NEW BUILD APARTMENT
- DIRECT RIVER VIEWS
- MODERN CONTEMPORARY FINISH
- 10 YEAR GUARANTEE
- SOUTHERLY ASPECT BALCONY
- CLOSE TO MAINLINE RAILWAY STATION
- AUDIO ENTRY SYSTEM
- LIFT TO ALL FLOORS
- SECURE UNDERGROUND PARKING
- HELP TO BUY SCHEME AVAILABLE





### Disclaimer

\* These particulars are intended to give a fair and substantially correct overall description for the guidance of intending purchasers and do not constitute an offer or part of a contract. Prospective purchasers and/or lessees ought to seek their own independent professional advice.

\* All descriptions, dimensions, areas, references to condition and necessary permissions for use and occupation and other details are given in good faith and are believed to be correct, but any intending purchasers should not rely on them as statements or representations of fact, but must satisfy themselves by inspection or otherwise as to the correctness of each of them.

\* All measurements are approximate

Energy Efficiency Rating		Environmental Impact (CO <sub>2</sub> ) Rating	
Current	Potential	Current	Potential
Very energy efficient - lower running costs		Very environmentally friendly - lower CO <sub>2</sub> emissions	
(92 plus) <b>A</b>		(92 plus) <b>A</b>	
(81-91) <b>B</b>		(81-91) <b>B</b>	
(69-80) <b>C</b>		(69-80) <b>C</b>	
(54-68) <b>D</b>		(54-68) <b>D</b>	
(39-54) <b>E</b>		(39-54) <b>E</b>	
(21-38) <b>F</b>		(21-38) <b>F</b>	
(1-20) <b>G</b>		(1-20) <b>G</b>	
Not energy efficient - higher running costs		Not environmentally friendly - higher CO <sub>2</sub> emissions	
England & Wales		England & Wales	
EU Directive 2002/91/EC		EU Directive 2002/91/EC	