



Kingswood Road, Brixton, SW2

2 bedroom flat - purpose built for sale

£500,000

Share of Freehold

Property Details

A two double bedroom, Victorian purpose-built garden flat with private entrance, perfectly located between Clapham and Brixton. The spacious bedroom at the front of the property is flooded with natural light thanks to large double sash windows. Built-in wardrobes help to maximise the available storage space in this comfortable double room and a touch of charming character will endear any buyer through classic Victorian embellished ceilings and wood flooring. Tucked away at the rear and overlooking the un-extended side return through to the garden, the second double room has similar characteristics to the former. A modern and tastefully decorated bathroom separates the bedrooms from the open-plan reception at the back of the property. The kitchen has built-in appliances and plenty of storage options. There is ample space to dine, without having to be separated from the living area which is nestled towards the bi-folding doors, opening out onto a low-maintenance, pretty garden. This flat is a fantastic all-rounder for anyone seeking their own private haven away from the buzz of Brixton, but close enough to both Brixton and Clapham to reap all the benefits this area has to offer.

Council tax band C EPC rating C (69)

Features

- Two double bedrooms
- Victorian purpose-built
- Private entrance
- Naturally bright and tastefully decorated
- Ideally located within walking distance to Brixton and Clapham High Streets
- Excellent transport links with access to the Victoria and Northern tube lines
- Private garden
- Share of freehold





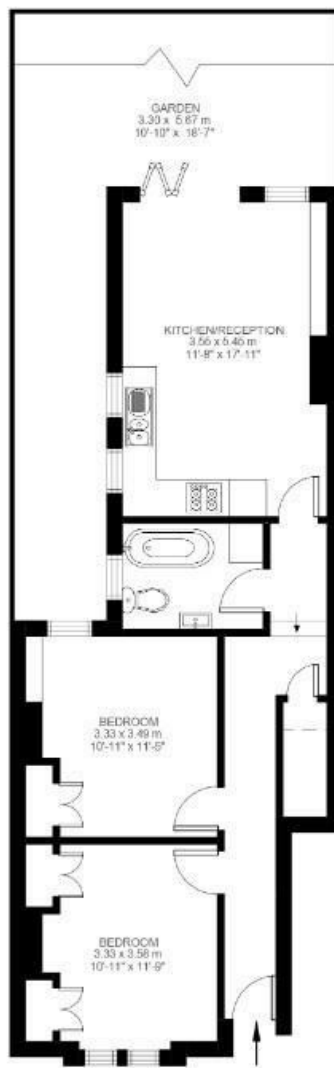
Kingswood Road

2 Bedroom Flat

Approx internal area:

650 sqft 60 sqm

While we do try our very best, floor plans are produced as a guide only and we take no responsibility for the precise accuracy with which any property is represented



Ground Floor



Kingswood Road, Brixton, SW2

