



Lord Kensington House, Kensington
London W14

GARTON JONES.COM



Lord Kensington House, Kensington London, W14

GARTON JONES.COM

8 Gatliff Road
Chelsea
London
SW1W 8DP

Sales +44 (0) 20 7730 5007
gws@gartonjones.com
www.gartonjones.com

£875 Per Week

A TWO DOUBLE BEDROOM apartment to rent of approx. (1033sq.ft (96sq.m) in Lord Kensington House. This FURNISHED apartment has a dual aspect open plan reception room with integrated kitchen with Miele appliances, two luxury bathrooms (1 en-suite), balcony, a utility cupboard housing a washer dryer and ample storage including wardrobes to both bedrooms. THERE IS UNDERFLOOR HEATING, COMFORT COOLING and SECURE PARKING.

The Kensington High Street development provides residents with a 24 hour concierge service, a private cinema screening room, leisure suite with a swimming pool, gym and sauna. Amenities close by including shops and restaurants and transport links are excellent with rail, bus and taxi services all within walking distance. Available via Garton Jones Chelsea & Belgravia.

Please note furniture may differ to that shown in current photo's

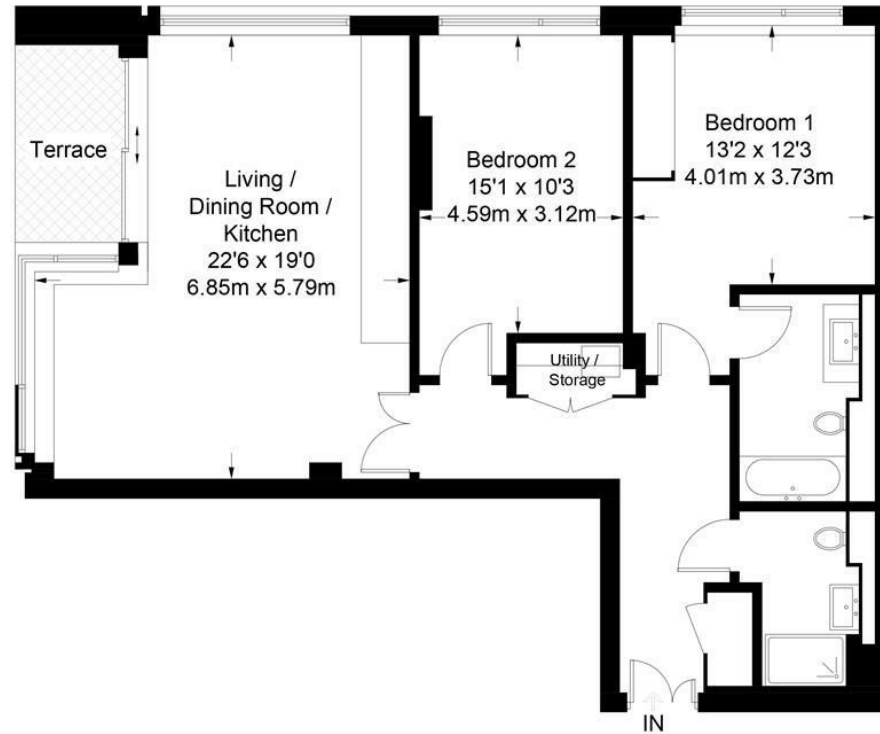
- 1033sq.ft (96sq.m)
- Two Double Bedrooms
- Open Plan Reception Room
- Kitchen with Integrated Appliances
- Two Luxury Bathrooms, Inclusive of 1 En-Suite
- 24 Hour Concierge
- Balcony
- Access to Private Cinema Screening Room, Leisure Suite with Swimming Pool, Gym and Sauna
- Amenities Close By Including Shops and Restaurants
- Excellent Transport Links Within Walking Distance



EPC certificate available on request.

Lord Kensington House

Approximate Gross Internal Area = 1033 sq ft / 96 sq m



Not to scale, for guidance only and must not be relied upon as a statement of fact.
All measurements and areas are approximate only and have been prepared in accordance with the current edition of the RICS Code of Measuring Practice.

