

Acacia Close

Cheltenham GL52 3EQ



Acacia Close, Prestbury, Cheltenham GL52 3EQ

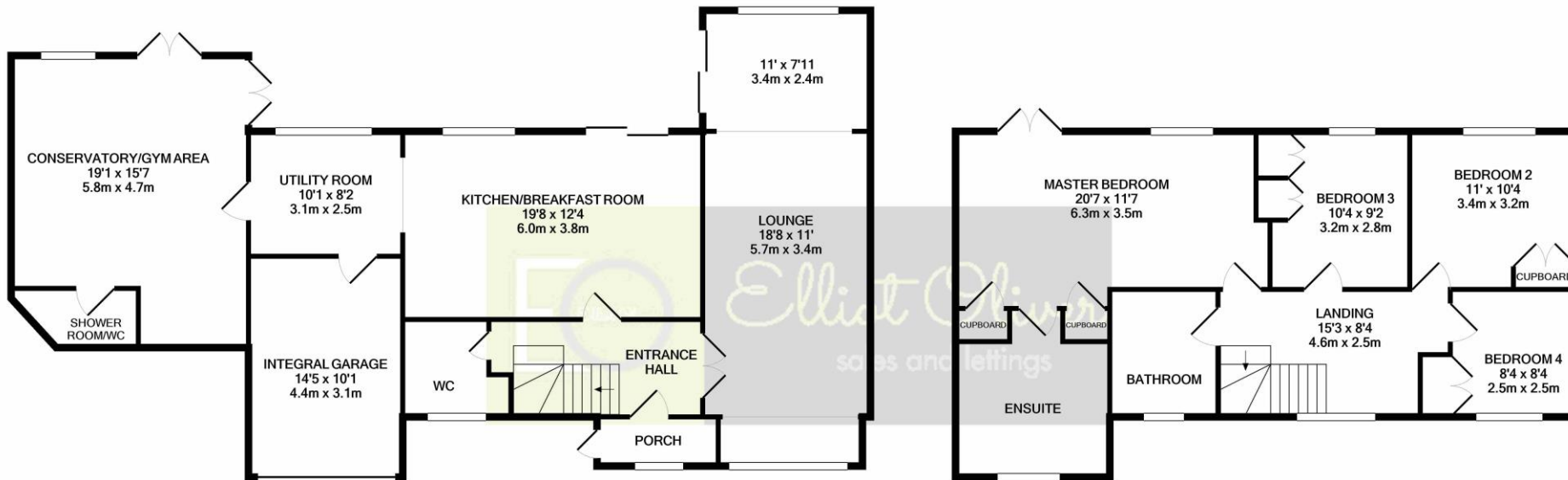
This is a stunning, imposing, four bedroom detached property set in a cul-de-sac location in the popular Prestbury village. The accommodation on the ground floor offers an extended lounge, kitchen/diner featuring a breakfast bar, utility room, cloakroom and a conservatory which is currently used as a gym with a shower area. The upstairs of this wonderful home offers four bedrooms, three of which are doubles and the master offering a stunning suite where you will find an en-suite bathroom with three piece suite, and built in wardrobes. The rear garden is very low maintenance but does have the size to make a lovely garden, Further benefits include gas central heating, off road parking and comes to the market with a no onward chain.











GROUND FLOOR
APPROX. FLOOR
AREA 1236 SQ.FT.
(114.8 SQ.M.)

1ST FLOOR
APPROX. FLOOR
AREA 800 SQ.FT.
(74.4 SQ.M.)

TOTAL APPROX. FLOOR AREA 2036 SQ.FT. (189.1 SQ.M.)

Whilst every attempt has been made to ensure the accuracy of the floor plan contained here, measurements of doors, windows, rooms and any other items are approximate and no responsibility is taken for any error, omission, or mis-statement. This plan is for illustrative purposes only and should be used as such by any prospective purchaser. The services, systems and appliances shown have not been tested and no guarantee as to their operability or efficiency can be given
Made with Metropix ©2020

Agents Note: Whilst every care has been taken to prepare these sales particulars, they are for guidance purposes only. All measurements are approximate and for general guidance purposes only and whilst every care has been taken to ensure their accuracy, they should not be relied upon and potential buyers are advised to recheck the measurements



OFFICE

101 Promenade,
Cheltenham,
Gloucestershire, GL50
1NW
info@elliottoliver.co.uk