



LOTUS RESIDENTIAL
SALES, LETTINGS AND PROPERTY MANAGEMENT

Meadowsweet Road

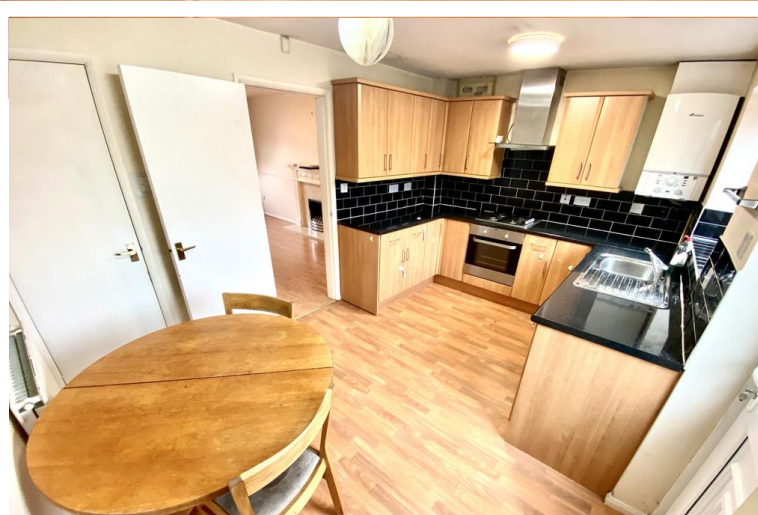
Leicester LE5 1TP

- 3 BEDROOM SEMI-DETACHED
- AVAILABLE IMMEDIATELY
- DRIVEWAY AND REAR GARDEN
- SOLAR PANELS

£795 pcm

EPC Rating 'TBC'





Property Description

Lotus Residential are pleased to present this modern semi detached home set within the popular & sought after residential location of Hamilton in LE5. The property itself benefits from an entrance hallway leading to the family lounge with feature fireplace and a fitted kitchen-diner. Upstairs are three bedrooms and a bathroom with 3pc suite. The property has full gas central heating and upvc double glazing. Outside there is off street parking and a good sized garden laid to lawn to the rear. Internal viewing is a must!







1-3 Upper King Street
Leicester
Leicestershire
LE1 6XF

www.jupix.co.uk
info@lotusresidentialuk.com
0116 216 9112

Agents Note: Whilst every care has been taken to prepare these sales particulars, they are for guidance purposes only. All measurements are approximate and for general guidance purposes only and whilst every care has been taken to ensure their accuracy, they should not be relied upon and potential buyers are advised to recheck the measurements