



Antrobus Road, London, W4 5HY

Guide Price £1,250,000

WHITMAN & CO.

SALES · LETTINGS · COMMERCIAL

Fantastic ground floor space

Landscaped 35' garden

Quiet residential street

- Garden studio/office
- Fully refurbished by current owner
- Close to shops, cafes and restaurants

Tenure - Freehold
 Local Authority - Ealing
 Council Tax - Band E

THE PROPERTY

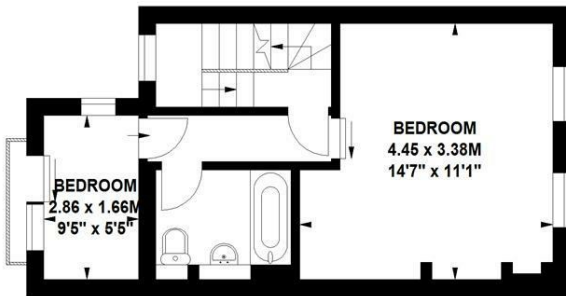
A very well presented period terraced house with excellent lateral ground floor space located on this quiet residential street within a short walk of Chiswick High Road, local parks and gastro pubs/restaurants. The property has been completely rebuilt and extended by the current owner to a very high standard and comprises 42' ground floor space with fitted kitchen area, dining area and full-width reception room, 35' landscaped garden, garden studio/office, spacious master bedroom, family bathroom, further double bedroom with ensuite bathroom, single bedroom, cloakroom, solid oak floors throughout, eaves and understair storage. Transport links include Chiswick Park and South Acton stations, local bus routes and the A4/M4 for routes in and out of London.

Antrobus Road

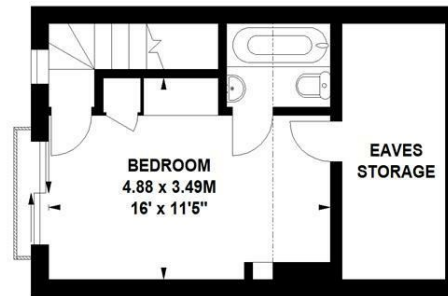
Approximate gross internal area

133.59 sq m / 1438 sq ft

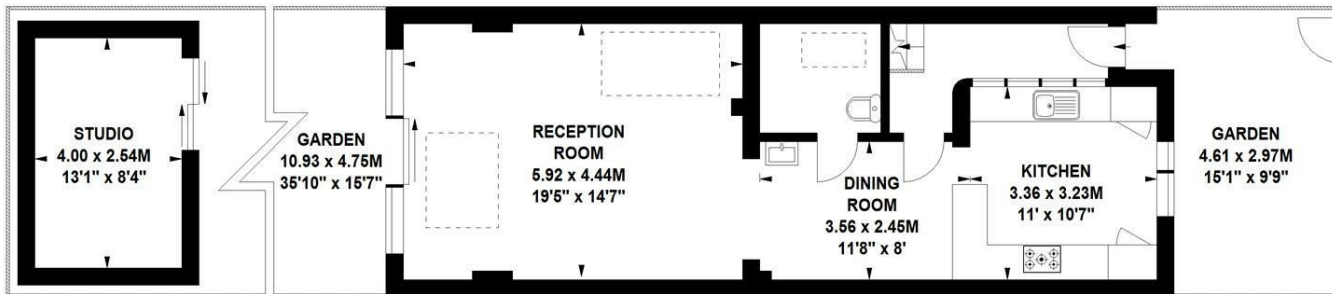
(Including Studio & Eaves Storage)



First Floor



Second Floor



Ground Floor

Not to scale, for guidance only and must not be relied upon as a statement of fact.
 All measurements and areas are approximate only

SITUATION



5-7 Turnham Green Terrace, Chiswick, London, W4 1RG

Tel 020 8747 8300

E-mail sales@whitmanandco.com

Website www.whitmanandco.com



MISREPRESENTATION ACT 1967

Whitman & Co. for themselves and for the vendors give notice that these particulars do not constitute any part of, an offer of contract. All statements contained in these particulars are made without responsibility on the part of Whitman & Co. or the vendor. None of the statements contained in these particulars is to be relied upon as statements or representations of facts. Any intending purchaser must satisfy himself by inspection or otherwise as to the correctness of each of the statements contained in these particulars. The vendor does not make or give, and neither Whitman & Co. or any person in their employment has any authority to make or give, any representation or warranty whatever in relation to the property.