



Jordanfishwick

DIDSBURY
Palatine Road



Palatine Road, Didsbury
M20 2UF
Guide price £179,950



The Property

A SPACIOUS TWO DOUBLE BEDROOM TOP FLOOR APARTMENT, WITH A BALCONY AND CONVENIENT LOCATION. 708 SQ FT. The living space is warmed by gas fired central heating, which is further complemented by uPVC double glazing and in outline comprises:- Communal entrance, private entrance hall, spacious living room with balcony off, fitted kitchen, two good sized double bedrooms with fitted wardrobes to one and a bathroom with white suite and chrome fittings. The development enjoys a convenient location, being set back from Palatine Road with gated residents and visitor parking. *NO ONWARD CHAIN*

Directions

From our Didsbury Office proceed along Wilmslow Road in the direction of Withington. At the first set of traffic lights turn left onto Barlow Moor Road and at the next main set of traffic lights turn left onto Palatine Road. Riverside Court can be found on the right hand side, just before the Britannia Country House Hotel.

- Spacious top floor flat
- Two double bedrooms
- Fitted Kitchen & bathroom
- Balcony
- Gas central heating
- uPVC double glazing
- Gated parking
- Convenient location
- No onward chain

Postcode - M20 2UF

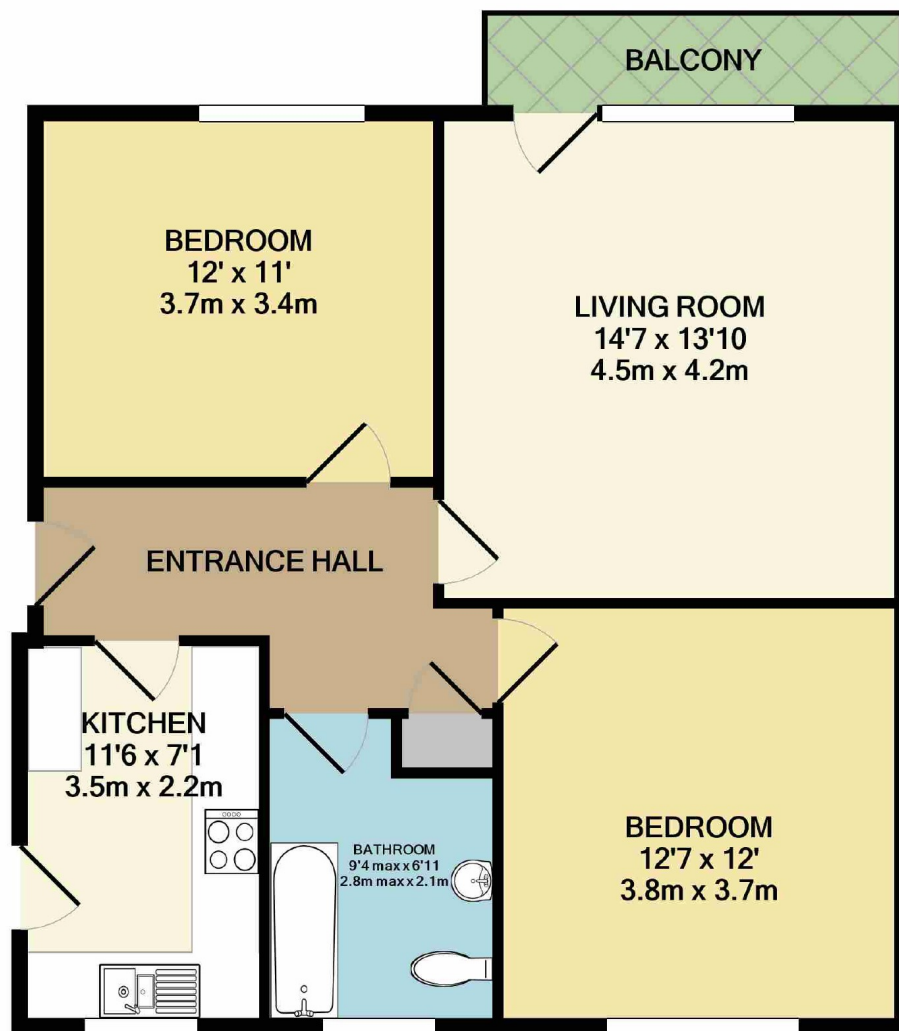
EPC Rating - E

Floor Area - 708 sq ft

Local Authority - Manchester City Council

Council Tax - Band B





TOTAL APPROX. FLOOR AREA 708 SQ.FT. (65.7 SQ.M.)

Measurements are approximate. Not to scale. Illustrative purposes only

Made with Metropix ©2020



These particulars are believed to be accurate but they are not guaranteed and do not form a contract. Neither Jordan Fishwick nor the vendor or lessor accept any responsibility in respect of these particulars, which are not intended to be statements or representations of fact and any intending purchaser or lessee must satisfy himself by inspection or otherwise as to the correctness of each of the statements contained in these particulars. Any floorplans on this brochure are for illustrative purposes only and are not necessarily to scale.

Offices also at: Wilmslow, Macclesfield, Hale, Sale, Chorlton, Glossop, Manchester & Salford

757-759 Wilmslow Road, Didsbury Village, Manchester

0161 445 4480

didsbury@jordanfishwick.co.uk

www.jordanfishwick.co.uk