



Palmerston Crescent, London

Guide Price £999,995

Havilands

the advantage of experience



- Four/Five bedrooms
- Chain free
- Stunning detached home
- Good proximity of overground & underground stations
- Three bathrooms
- Fully renovated

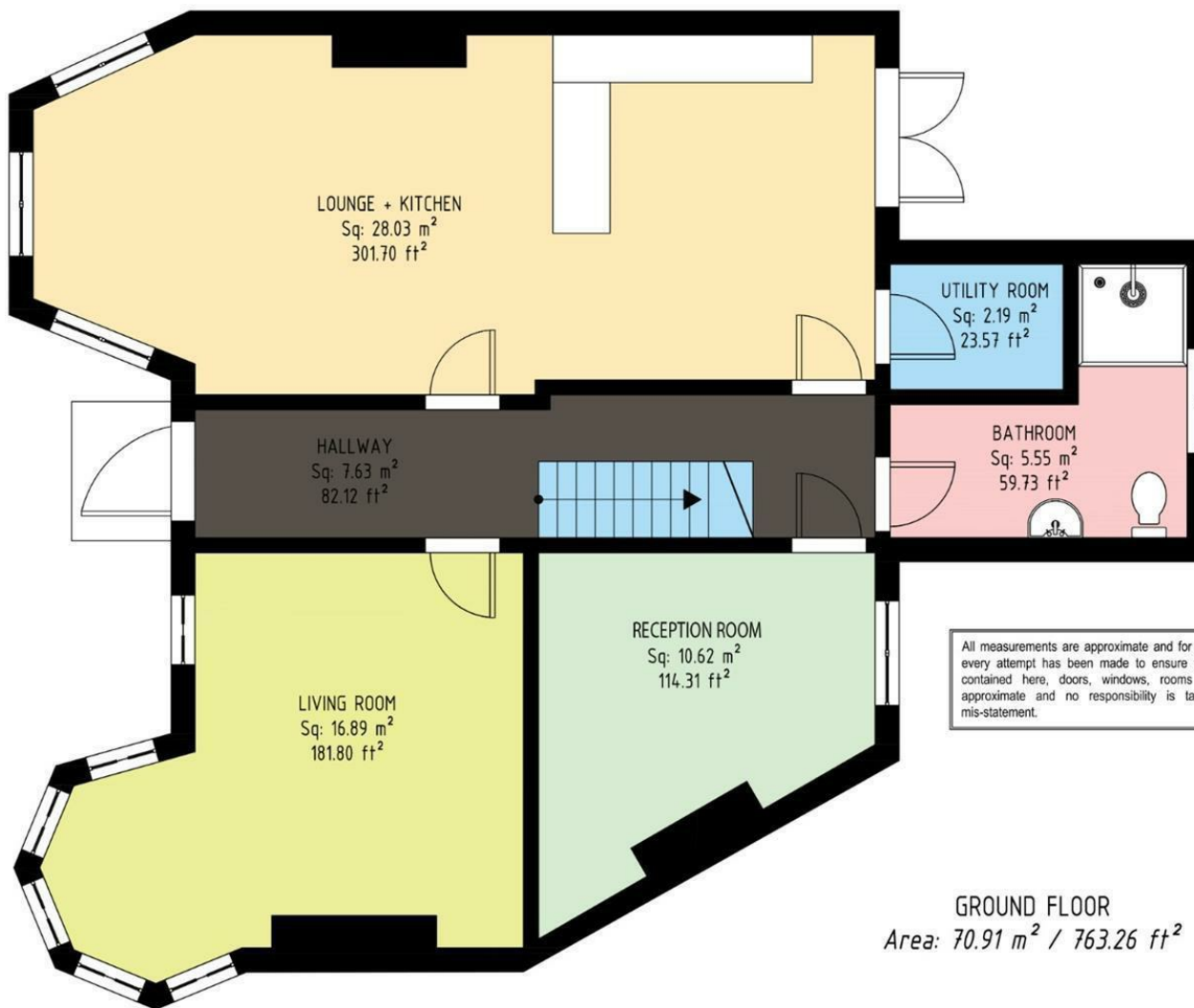


For more images of this property please visit havilands.co.uk



Havilands are pleased to present this beautifully presented large four double bedroom period home boasting a wealth of period features. Offering bright and spacious living accommodation, there are four double bedrooms, two reception rooms, an open plan kitchen/diner and 3 bathrooms. Within close proximity to Palmers Green shops, restaurants as well as Palmers Green overground station and Bounds Green tube station. Please contact our office for more information. Stamp duty paid - subject to T&C's.

For more images of this property please visit havilands.co.uk



All measurements are approximate and for display purposes only. Whilst every attempt has been made to ensure the accuracy of the floorplan contained here, doors, windows, rooms and any other items are approximate and no responsibility is taken for error, omission or mis-statement.

havilands | 020 8886 6262
come by and meet the team
30 The Green, Winchmore Hill, London, N21 1AY