



Wellington Court, Shelton Street, Covent Garden, London, WC2H
£550 pw

> 2 Bedrooms > 2 Bathroom > Unfurnished

TAVISTOCKBOW
RESIDENTIAL



- > Two double bedrooms
- > Two bathrooms
- > Open Plan Kitchen
- > Second floor with lift
- > Modern finishes
- > Unfurnished
- > Wood floors throughout
- > High specification
- > Available immediately
- > Close to Leicester Square and Covent Garden stations

A lovely modern two bedroom, two bathroom apartment situated on the second floor of a great development in central Covent Garden. The apartment is approx 600 sq ft and has a contemporary feel throughout with modern kitchen and bathrooms. Available immediately on an unfurnished basis. Westminster Council Tax Band- E.





WHAT WE LOVE:

Very quiet
Contemporary design
Amazing location
Great for sharers
Fantastic built in wardrobes.

WHAT YOU NEED TO KNOW:

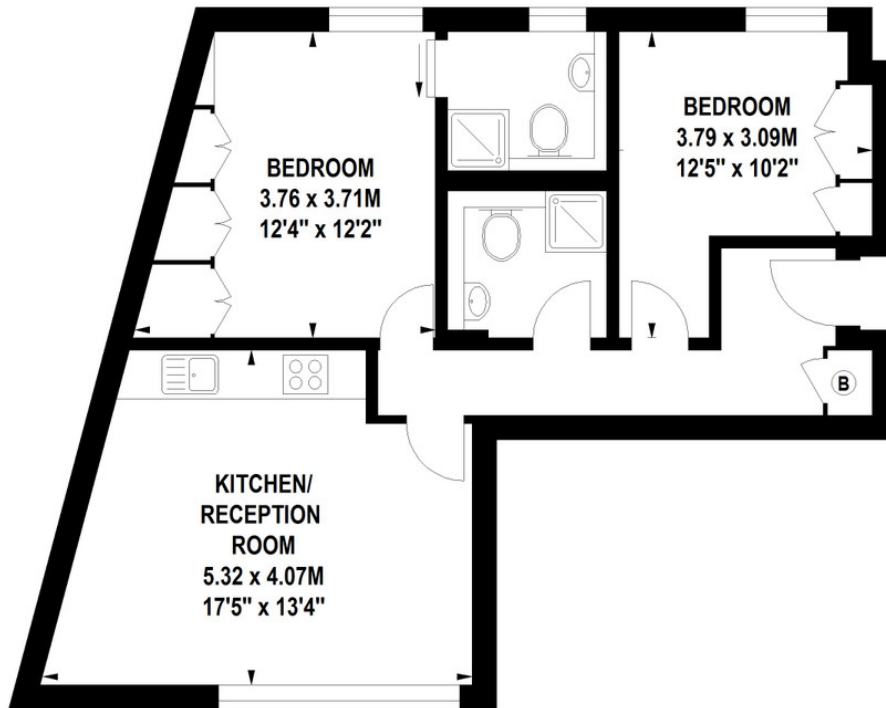
Second floor with lift
Two double bedrooms
Two shower rooms (no bath)
Minutes from Leicester Square & Covent
Garden tube
Westminster Council Tax.



Wellington Court, WC2H

Approximate gross internal area

57 sq m / 614 sq ft



First Floor

Floor Plan produced for Tavistock Bow by Mays Floorplans © . Tel 020 3397 4594
 Illustration for identification purposes only, not to scale
 All measurements are maximum, and include wardrobes and window bays where applicable

EPC

Energy Efficiency Rating		Current	Potential	Environmental (CO ₂) Impact Rating		Current	Potential
Very energy efficient - lower running costs				Very environmentally friendly - lower CO ₂ emissions			
(92-100) A				(92-100) A			
(81-91) B				(81-91) B			
(69-80) C				(69-80) C			
(55-68) D				(65-68) D	59	62	
(39-54) E		70		(39-54) E			
(21-38) F				(21-38) F			
(1-20) G				(1-20) G			
Not energy efficient - higher running costs				Not environmentally friendly - higher CO ₂ emissions			
England & Wales		EU Directive 2002/91/EC		England & Wales		EU Directive 2002/91/EC	

About Us

Tavistock Bow is an independent residential agency based in Covent Garden. We are niche, boutique, creative, knowledgeable, professional and approachable. We love what we do and that's why we do it.

Contact Us

- a.** 31 Long Acre, London, WC2E 9LA
- t.** 020 7477 2177
- e.** hello@tavistockbow.com
- w.** tavistockbow.com

