

8 Rochester Avenue, Chorlton, M21 7DE



2 DOUBLE BEDS
1st FL. FLAT
VIEW BY APPOINTMENT

FOR SALE

JP&Brimelow

0161 882 2233

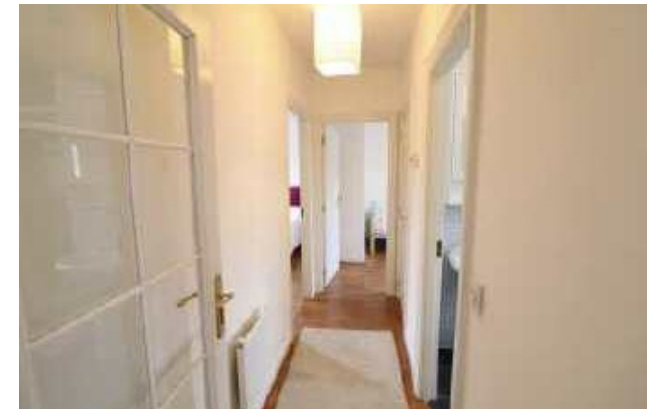
@jpandbrimelows

JP&Brimelow

SALES

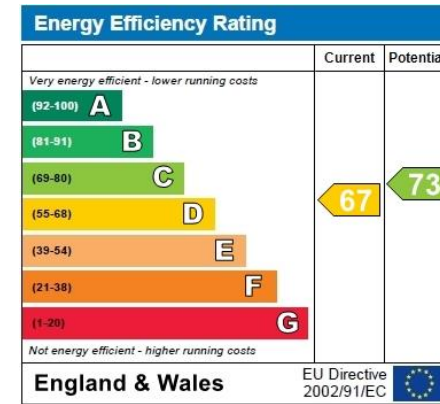
Price: £190,000

****VIDEO TOUR AVAILABLE**** A truly stunning & immaculately presented, **TWO DOUBLE BEDROOMED**, modern, first floor apartment with its own private entrance at the ground floor. Situated on this highly popular residential development off Nell Lane here in Chorlton. Within walking distance to the Metrolink Station on Barlow Moor Road giving you direct access to Manchester International Airport and the city centre, Chorlton Park and the amenities in West Didsbury on Burton Road. In brief, the light and sunny accommodation comprises: private entrance hallway at ground floor with alarm control panel, first floor landing with boarded loft space, a through lounge/dining room with views to dual aspect, a fully fitted kitchen to the front with modern appliances, two double bedrooms and a white three-piece family bathroom. The property benefits from double glazing throughout, an alarm system, warmed by gas fired boiler heating system, enclosed private courtyard garden to the front and an allocated secure parking space to the rear with a garage. **OFFERED WITH NO VENDOR CHAIN.** Would ideally suit a first-time buyer or couple.



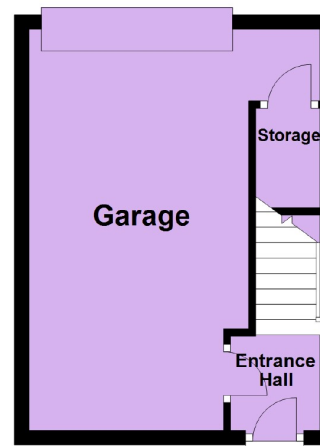


EPC Chart

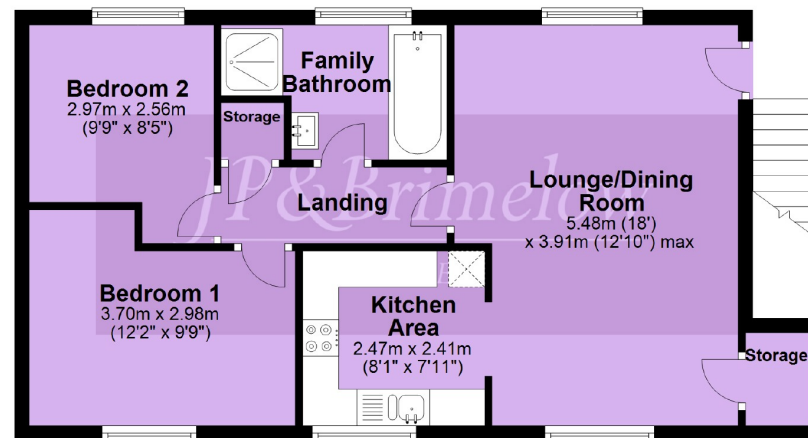


Leasehold With an original lease of 999 years and 981 years remaining. The annual service charge is £1411. Annual ground rent of £75.00. (Information as per current vendor) October 2020. Council Tax Band: B

Ground Floor



First Floor

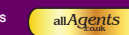


Chorlton & Didsbury Sales

430 Barlow Moor Road, Chorlton, Manchester, M21 8AD

Chorlton: 0161 882 2233 Didsbury: 0161 448 0622

E: chorlton@jpbrimelow.co.uk www.jpandbrimelow.co.uk



JP&Brimelow

SALES

NOTICE: J P & Brimelow Chorlton & Didsbury Ltd for themselves and for the vendors or lessors of this property whose agents they are give notice that:

(i) the particulars are set out as a general outline only for the guidance of intending purchasers or lessees, and do not constitute, nor constitute part of, an offer or contract;

(ii) all descriptions, dimensions, references to the condition and necessary permissions for use and occupation, and other details are given in good faith and are believed to be correct but any intending purchasers or tenants should not rely on them as statements or representations of fact but must satisfy themselves by inspection or otherwise as to the correctness of each of them;

(iii) no person in the employment of JP & Brimelow Ltd has any authority to make or give any representation or warranty whatever in relation to this property.



Follow us on Twitter @jpandbrimelows