



Connaught Mansions, Coldharbour Lane, 2 bedroom flat - conversion for sale

£525,000

Property Details

A beautifully presented two double bedroom flat within this classic period building nestled on the popular Coldharbour Lane in the heart of Brixton. This lovely secure apartment is perfect for anyone who wants to have the wide range of amenities on offer in Brixton within close proximity but would like to remain tucked away quietly in this desirable Victorian mansion block. The apartment comprises a bright open plan kitchen and reception room, two very spacious double bedrooms, and a modern bathroom. The icing on the cake is the huge communal roof terrace, loved and cared for by the residents of Connaught Mansions.

Features

- Two double bedrooms
- Secure Victorian mansions block
- Central location
- Large communal roof terrace
- Excellent transport links

Council tax band B EPC rating D (57)





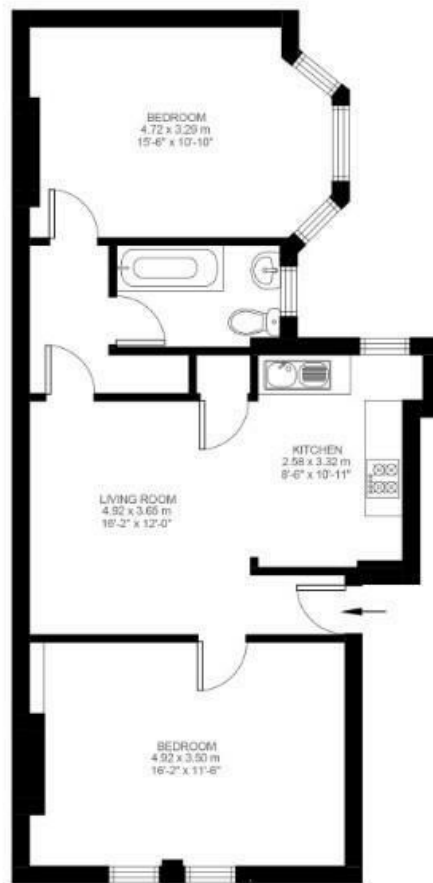
2 Bedroom Flat

Approx internal area:

692 sqft 64 sqm

While we do try our very best, floor plans are produced as a guide only and we take no responsibility for the precise accuracy with which any property is represented

Coldharbour Lane



Third Floor



Connaught Mansions, Coldharbour Lane, Brixton, SW9

