



Heathfield Gardens, London, W4 4JY

£750,000

**WHITMAN & CO.**

SALES · LETTINGS · COMMERCIAL

- Three double bedroom Victorian conversion
- 17' reception room with bay window
- 12'6 fully fitted kitchen/breakfast room
- 50% share in the freehold
- Centrally located
- No chain

Tenure - Leasehold with 50% share of freehold  
 Ground Rent - peppercorn  
 Local Authority - Hounslow  
 Council Tax - Band F (£2321pa)

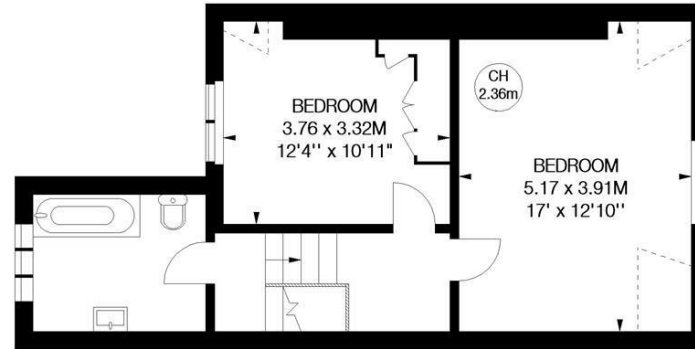
## THE PROPERTY

An exceptionally spacious three double bedroom Victorian conversation flat ideally located on this prestigious residential road just south of Chiswick High Road. Accommodation comprises three double bedrooms, white bathroom suite, 17' reception room with feature bay window, 12'6 fully fitted kitchen/breakfast room, 50% share in the freehold, excellent balance of living and entertaining space. Centrally located offering close proximity to the extensive shopping, bar and restaurant facilities on Chiswick High Road. Tube, road and bus routes are also close at hand. No chain.

### Heathfield Gardens, W4

Approximate gross internal area  
 108.04 sq m / 1163 sq ft

Key :  
 CH - Ceiling Height



Second Floor



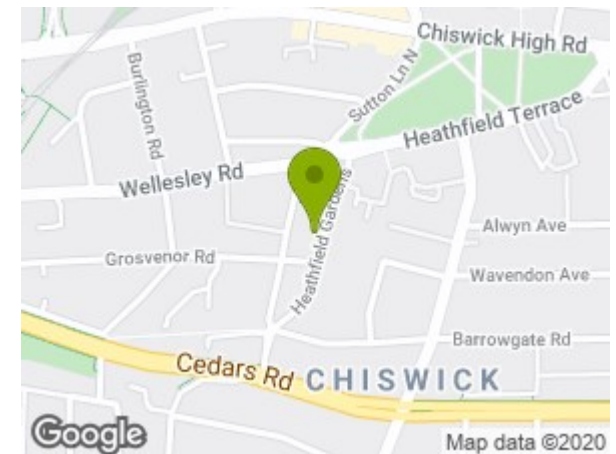
First Floor



Ground Floor  
 Entrance

Not to scale, for guidance only and must not be relied upon as a statement of fact.  
 All measurements and areas are approximate only

## SITUATION



5-7 Turnham Green Terrace, Chiswick, London, W4 1RG

Tel 020 8747 8300

E-mail [sales@whitmanandco.com](mailto:sales@whitmanandco.com)

Website [www.whitmanandco.com](http://www.whitmanandco.com)



MISREPRESENTATION ACT 1967

Whitman & Co. for themselves and for the vendors give notice that these particulars do not constitute any part of, an offer of contract. All statements contained in these particulars are made without responsibility on the part of Whitman & Co. or the vendor. None of the statements contained in these particulars is to be relied upon as statements or representations of facts. Any intending purchaser must satisfy himself by inspection or otherwise as to the correctness of each of the statements contained in these particulars. The vendor does not make or give, and neither Whitman & Co. or any person in their employment has any authority to make or give, any representation or warranty whatever in relation to the property.