



THE MILLINERS ST. THOMAS STREET,
CITY CENTRE, BS1 6WU

GOODMAN
& LILLEY



A SUPERB ONE BEDROOM CITY CENTRE APARTMENT WITH A GENEROUS OPEN PLAN LIVING SPACE, SUPERB CITY VIEWS, A SECURE ALLOCATED PARKING SPACE ALL IN A POPULAR DEVELOPMENT A SHORT WALK FROM THE WATERFRONT. AN IDEAL INVESTMENT / FIRST PURCHASE.

Location

In our opinion this property represents some of the best attributes that Central Bristol developments have to offer. The location offers access to a wealth of local amenities, businesses, cafes bar and restaurants. The wonderful location across from Redcliffe Quay is also perfectly located for access to the centre and major transport links including Bristol Temple Meads railway station.

Accommodation

Communal Entrance

The development has an attractive entrance and foyer with both stairs and lifts to all floor. The door to the apartment is at the end of the corridor.

Open Plan Living Area

A generous room with wonderful city views and space for a modern fitted kitchen, living and dining area's, utility cupboard with plumbing for washing machine, triple glazed windows to two aspects and a door to a superb balcony, door to the bedroom with en suite.

Balcony

The balcony provides welcome outside space in the city centre with outstanding views.

Bedroom

A generous double bedroom with triple glazed windows, fitted wardrobes and a door to the shower room.

Shower Room

Fitted to a high standard with over sized shower enclosure, concealed cistern WC, and wash basin, with tiled walls, triple glazed windows.

Allocated Parking

The apartment has the added advantage of a secure under croft parking space.

Other Information

Management Fee: £94 per month

Ground Rent: £250 per year

Lease: 250 years / 248 years remaining

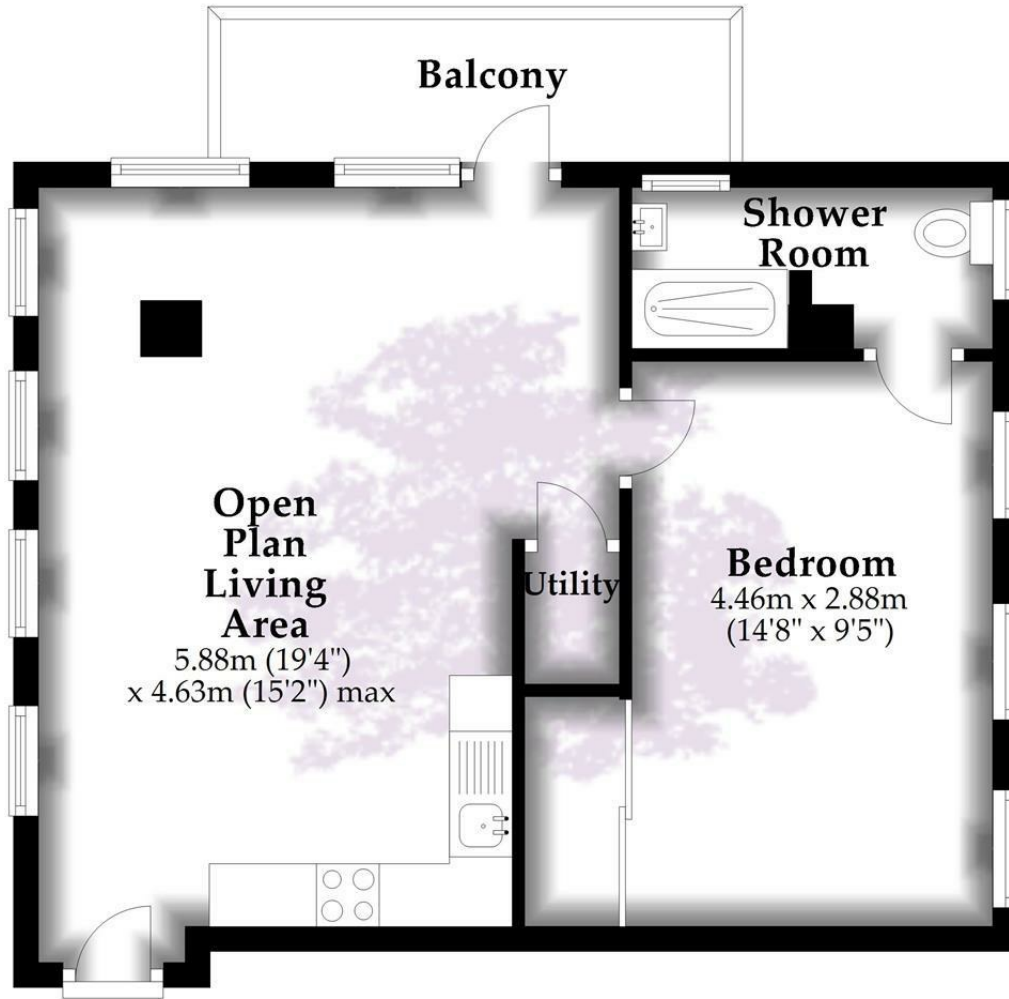
-
- City Centre Apartment
 - Balcony
 - One Double Bedroom
 - No Chain
 - Beautiful City View
 - Allocated Parking Space
 - Cash Buyers
 - Wonderfully Presented



GUIDE PRICE £265,000



Floor Plan



HENLEAZE - 0117 2130777
henleaze@goodmanlilley.co.uk

PORTISHEAD - 01275 430440
sales@goodmanlilley.co.uk

SHIREHAMPTON - 0117 2130333
shire@goodmanlilley.co.uk

Zoopla.co.uk

rightmove



WWW.GOODMANLILLEY.CO.UK

These particulars are for general guidance only. They do not form or constitute any part of an offer or contract. Goodman & Lilley has not carried out structural surveys of the property. The services, appliances or specific fittings mentioned in these details have not been tested. Every attempt is made to ensure accuracy, however all photographs, measurements, floor plans and distances are for illustrative purposes only. They must not be relied upon when purchasing carpets and or other fixtures & fittings. Lease details, service charges and ground rents are given as a guide only. They should be checked and confirmed by a licensed solicitor prior to exchange of contracts. The copyright of all details, photographs and floor plans remain exclusive to Goodman & Lilley.