



BLUEBELL ESTATES



14, Twyford Court, Maidstone, ME14 5RX
£925 PCM

About this property.....

We are delighted to offer this refurbished, two bedroom first floor maisonette located within Vinters Park. The property is situated in a quiet location and has a lovely outlook to the front. The kitchen offers an integrated fridge/freezer with space for a washing machine and dishwasher and there are two double bedrooms. This lovely property also benefits from its own garden, although this is not accessed directly from the property but it does provide a nice area to enjoy the sunshine. There is also a useful garage located nearby. Regrettably the landlord will not consider tenants with pets or those who smoke. Call us now to avoid missing out.

Situation.....

The property is located in a quiet location on the ever-popular Vinters Park development, just over 1 mile from Maidstone town centre. Maidstone is the County town of Kent and as such boasts extensive retail, entertainment, and leisure facilities in addition to numerous state and grammar educational establishments. The town has mainline train links via Maidstone East train station giving journey times to London of just over 1 hour. The town has links to junctions 5, 6 and 7 of the M20 providing road access to London









Useful Information.....

SECURITY DEPOSIT = FIVE WEEKS' RENT

MINIMUM INCOME REQUIRED = £27,750 pa

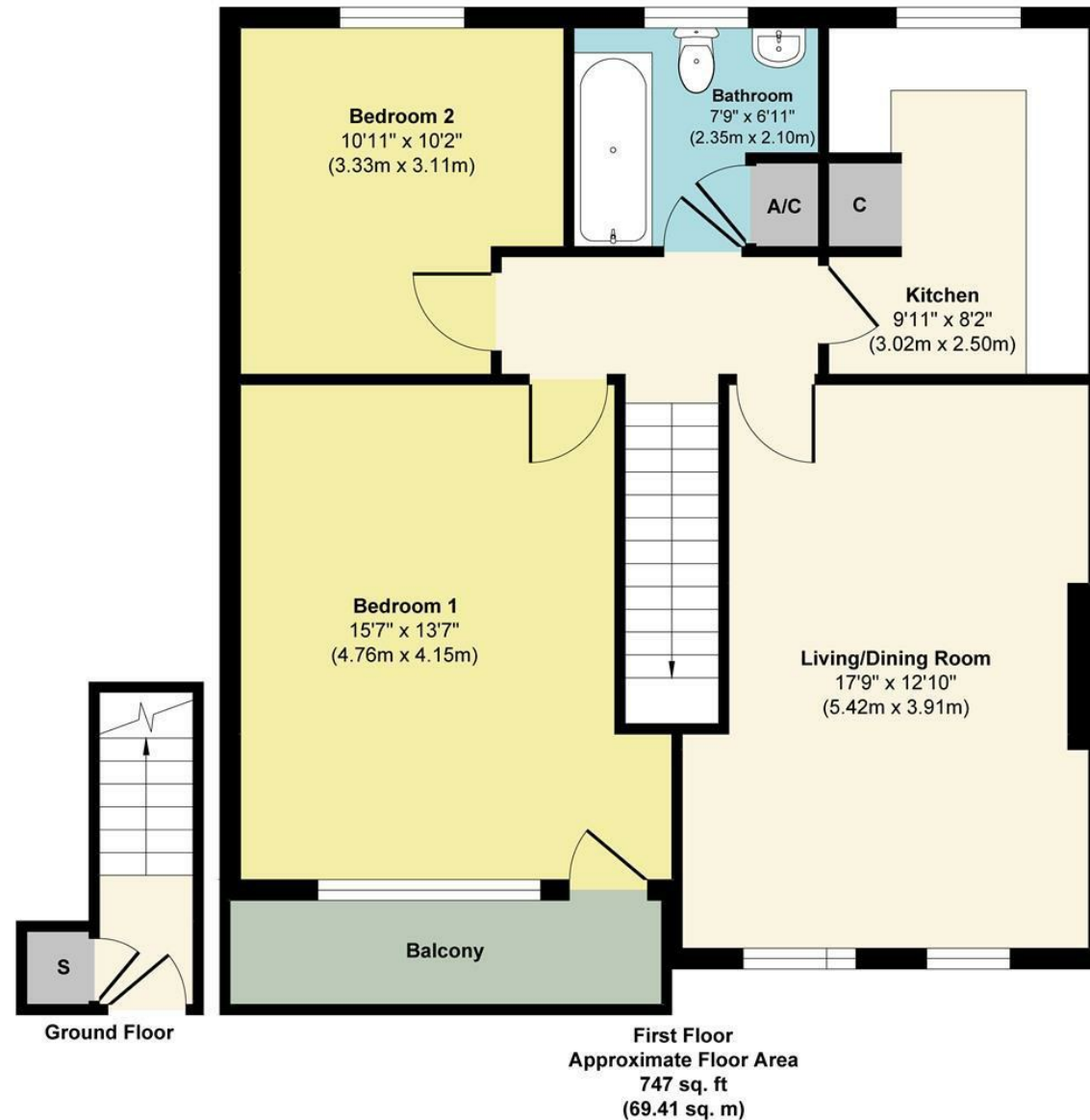
TENANTS WITH PETS = NOT ACCEPTABLE

TENANTS WHO SMOKE = NOT ACCEPTABLE

HOLDING DEPOSIT = ONE WEEKS' RENT

This is to reserve a property. Please Note: This will be withheld if any relevant person (including any guarantor(s)) withdraw from the tenancy, fail a Right-to-Rent check, provide materially significant false or misleading information, or fail to sign their tenancy agreement (and / or Deed of Guarantee) within 15 calendar days (or other Deadline for Agreement as mutually agreed in writing).

14, Twyford Court, Maidstone, ME14 5RX



Approx. Gross Internal Floor Area 747 sq. ft / 69.41 sq. m

Illustration for identification purposes only, measurements are approximate, not to scale.

Produced by Elements Property

Agents Notes

Floor plans produced for illustrative purposes only. The position and sizes of doors, windows, rooms and other items are approximate and no responsibility is taken for any error, omission or mis-statement. These particulars are produced for information only and do not form part of any contract. The agent has not had sight of any title documents. Fixtures, fittings and services not tested.



bluebell-estates.co.uk