



WALTON ROBINSON



To Let

26 Brentwood Avenue, Jesmond NE2 3DH

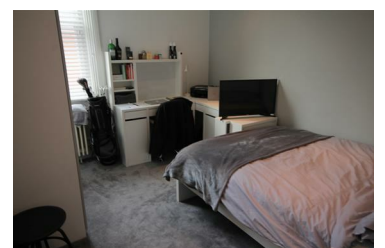
£2,868 PCM



BEAUTIFULLY presented terraced UPPER MAISONETTE located in the highly desirable location of WEST JESMOND. There are six DOUBLE BEDROOMS, all of which are of equal proportions. The property has undergone a FULL REFURBISHMENT in 2020-21, including a new kitchen and bathrooms, new furniture, lighting, and carpets throughout and a full interior decoration.

The location is SUPERB allowing easy access to the CITY CENTRE, West Jesmond METRO Station and OSBORNE ROAD. Situated on Brentwood Avenue, you are a stones throw away from a host of various eateries and boutique shops. We HIGHLY recommend a viewing of this property as soon as possible as it will not be available for long.

- Maisonette
- AVAIL 26/08/2021 - 24/08/2022
- Leather Sofas
- Two Bathrooms
- The bills package payable on this property is £14 pppw
- Six Double Bedrooms
- 42" Plasma TV In Lounge
- Decking area at the rear
- Close To West Jesmond Metro



101 Percy Street, City Centre, Newcastle upon Tyne, NE1 7RY
T: 01912431000 | Email: enquiries@waltonrobinson.com | www.waltonrobinson.com