



**WALTON
ROBINSON**



To Let

3 Osborne Terrace, Jesmond NE2 1NE

£825 PCM

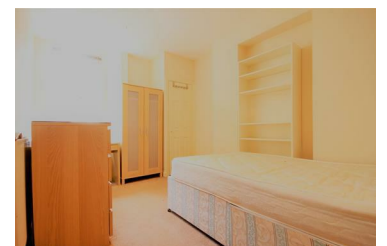
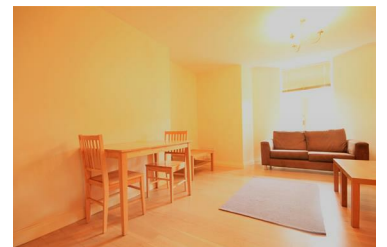
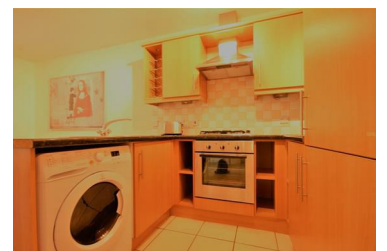


FANTASTIC two bedroom basement flat available on the popular Osborne Terrace, Jesmond. The property is situated within close proximity to both universities making it the ideal student property. It is also only a short walk away from the hustle and bustle of Osborne Road.

The property is comprised of two generous DOUBLE bedrooms, both of which come fully furnished with bed, desk and wardrobe. There is an open plan lounge and kitchen with French doors leading out onto a shared front garden. The lounge complete with two fabric sofas, coffee table, dining table & chairs and finished with laminate flooring. The kitchen is compact but provides all the essential appliances. There is a MODERN family bathroom with shower over bath and W/C.

The property further benefits from UPVC double glazing and electric heating.

- Basement Apartment
- Open Plan Kitchen / Lounge
- Bathroom with Shower
- Double Glazing / GCH
- Perfect for Students or Professionals
- Two Double Bedrooms
- Integrated Appliances
- Excellent Location
- Ideal Location
- AVAIL 10/09/2021 - 09/09/2022



101 Percy Street, City Centre, Newcastle upon Tyne, NE1 7RY
T: 01912431000 | Email: enquiries@waltonrobinson.com | www.waltonrobinson.com