



1,158
sq ft



4



1



1

REDBRIK
ESTATE AGENTS 

Helping you find
your home at...

St. Lawrence Road, North Wingfield

Offers In Region Of £305,000

This significantly extended four bedroom detached bungalow is located within the sought after village of North Wingfield.

- Four Bedroom Detached Bungalow
- Fitted Kitchen
- Open Living & Dining Area
- Three Double Bedrooms, One Single
- Bathroom With Three Piece Suite
- Occasional Attic Room
- Enclosed Garden With Ornamental Feature
- External Summer House
- Ample Off Road Parking Including A Double Garage
- Energy Rating - C, Tenure; Freehold.





Likely to be of interest to a range of buyers including those looking to downsize, is this well-proportioned property which offers a spacious 1158 sq. ft. of accommodation.

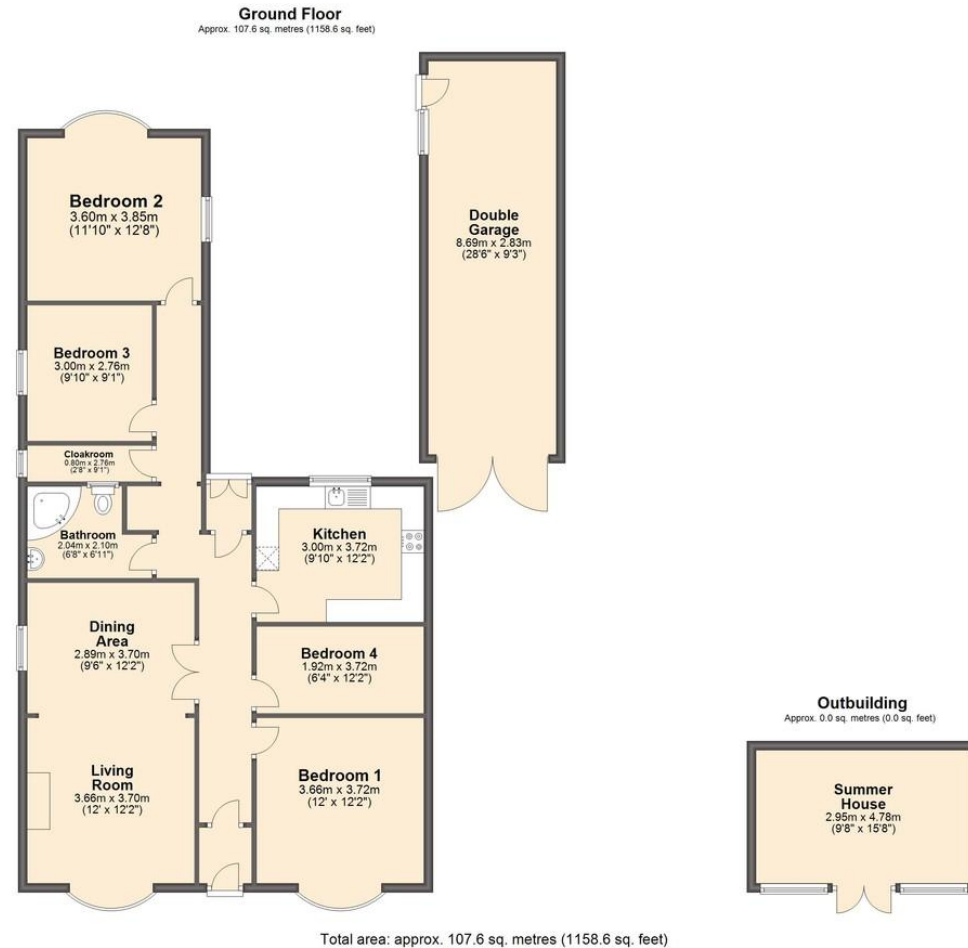
Offering ample living space including an open plan living and dining area, four good sized bedrooms and an occasional/attic room all combine to create a desirable home. The enclosed rear garden with summer house and ornamental feature perfect for those who love to spend time in the garden.

Perfectly placed for all local shops and amenities of which North Wingfield has to offer and is located a short distance from the motorway network.









We endeavour to make these particulars as accurate as possible, but they should only be used as guidance and they do not constitute any part of the contract. All measurements are approximate and no guarantees are made to the services, heating systems, appliances (if any) or fittings as to their working order and no warranty can be given or implied.

You may download, store and use this material for your own personal use and research. You may not republish, retransmit, redistribute or otherwise make the material available to any party or make the same available on any website, on or offline service or hard copy without the website owner's express written consent. The website owner's copyright must remain on all reproductions of material taken from this website.