



Fairfield Road, Bow, E3

BUTLER & STAG



Guide Price £450,000 - £475,000

A stunning fourth floor, two bedroom conversion enjoying a rare corner plot position with spectacular views across the City skyline and the well-tended communal gardens of the Bow Quarter Development.



Leasehold

- Underground Parking
- Spectacular Views
- Wealth Of Natural Light
- Residents Gym & Swimming Pool
- On-Site Convenience Store
- Two Double Bedrooms
- Dual-Aspect Reception
- Beautiful Communal Gardens
- 24 Hour Concierge
- Great Transport Links

Comprising a semi-open plan modern kitchen and dual aspect reception with large factory windows allowing for a wealth of natural light and stunning views. Two double bedrooms, bathroom and useful storage spaces complete the property.

This particular apartment is in a rare wing of the building not affected by road or rail noise and must be viewed to be appreciated.

Located within easy reach of Victoria Park, the Olympic Village and conveniences of Roman Road, Bow Quarter has excellent on-site amenities, some of which include, 24-hour concierge, convenience store, residents-only leisure centre complete with swimming pool, sauna, jacuzzi, gymnasium, communal terrace with seating and plans to open a bar/restaurant/co-working space.

Multiple transport links are easily accessible including tube links from Bow Road (District and Hammersmith & City), Bow Church DLR and Mile End underground (Central, District and Hammersmith & City) offering swift and direct access to Canary Wharf, The City and West End.

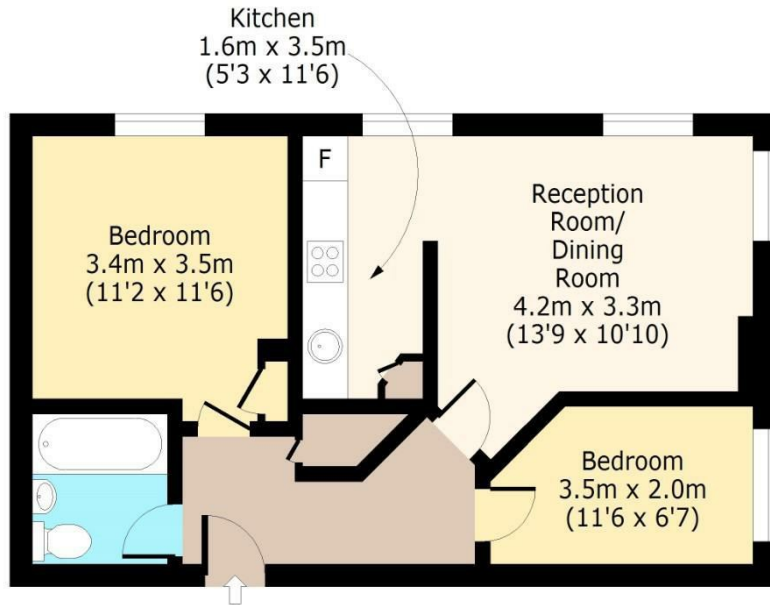




Lexington Building, E3

Fourth Floor

Approx. 55 Sq. meters (589 Sq. feet)



Total area: approx. 55 Sq. meters (589 Sq. feet)

For illustration purposes only - not to scale

www.lpaplus.com

IMPORTANT NOTICE - These particulars have been prepared in good faith and they are not intended to constitute part of an offer or contract. We have not performed a structural survey on this property and the services, appliances and specific fittings have not been tested. All photographs, measurements, floor plans and distances referred to are given as a guide and should not be relied upon.

BUTLER & STAG

☎ 01992 667666

🏠 4 Forest Drive, Theydon Bois, Essex, CM16 7EY

✉ theydon@butlerandstag.com

www.butlerandstag.uk