



Farm End, Chingford, E4

BUTLER & STAG



Detached, three bedroom two bathroom home in desirable sewardstonebury, a small hamlet on the outskirts of North Chingford, London E4. A quiet, semi rural location with access to golf and equestrian facilities, excellent local schooling and with TFL transport (Zone 5) within one mile. CALL NOW



Freehold

- Three Bedroom Detached Cottage
- Two Bathrooms & Guest Cloakroom
- Bright Open Plan Living
- Landscaped Gardens
- Secluded Location
- Chingford Overground (TFL 5)
- Countryside and Golf Clubs

Swatchways is a charming, three double bedroom, two bathroom detached cottage, set in a secluded Cul-De-Sac in sought after Sewardstonebury.

The 30' reception room has picture sliding doors that give uninterrupted views across the landscaped front garden, hardwood parquet flooring and French Stove as a period feature set into an exposed brick feature wall.

The country style kitchen offers ample space with integrated appliances, and Aga oven, completely in keeping with the charming style of the property. Additionally, there is a ground floor study, guest cloakroom and integrated garage that supplements the external parking for several vehicles.

Upstairs, each of the bedrooms is a comfortable double, bedroom one benefits from a high quality en-suite and there is a family bathroom, offering excellent flexibility for families/guests.

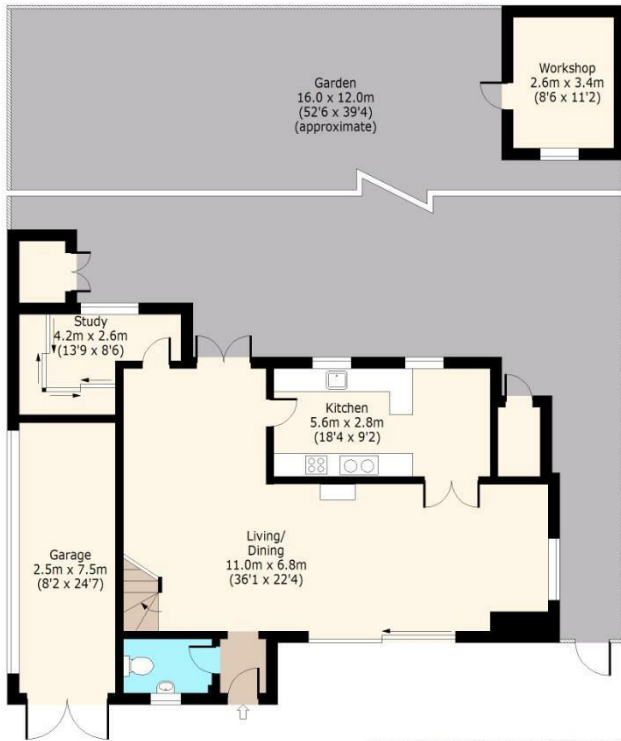
On the market for the first time in twenty years, the owners were attracted to the quiet location that is great for walks into the countryside



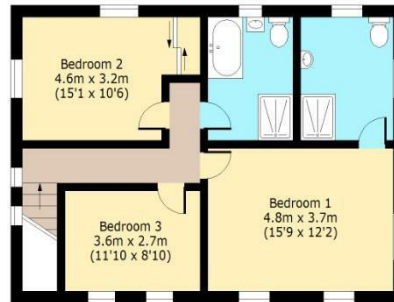


Farm End,

Ground Floor
Approx. 110 Sq. meters (1184 Sq. feet)



First Floor
Approx. 68 Sq. meters (734 Sq. feet)



Total area (Including Workshop): approx. 188 Sq. meters (2023 Sq. feet)
Total area (Excluding Workshop): approx. 179 Sq. meters (1928 Sq. feet)
For illustration purposes only - not to scale
www.lpa.plus.com

BUTLER & STAG

☎ 01992 667666

🏠 4 Forest Drive, Theydon Bois, Essex, CM16 7EY

✉ theydon@butlerandstag.com

www.butlerandstag.uk

IMPORTANT NOTICE - These particulars have been prepared in good faith and they are not intended to constitute part of and offer or contract. We have not performed a structural survey on this property and the services, appliances an specific fittings have not been tested. All photographs, measurements, floor plans and distances referred to are given as a guide and should not be relied upon.