

**Lanadron Close
Isleworth
TW7 5GB**

55% Shared Ownership
£159,500

ChaseBuchanan



Langtry Court

Approximate Gross Internal Area = 66.5 sq m / 716 sq ft

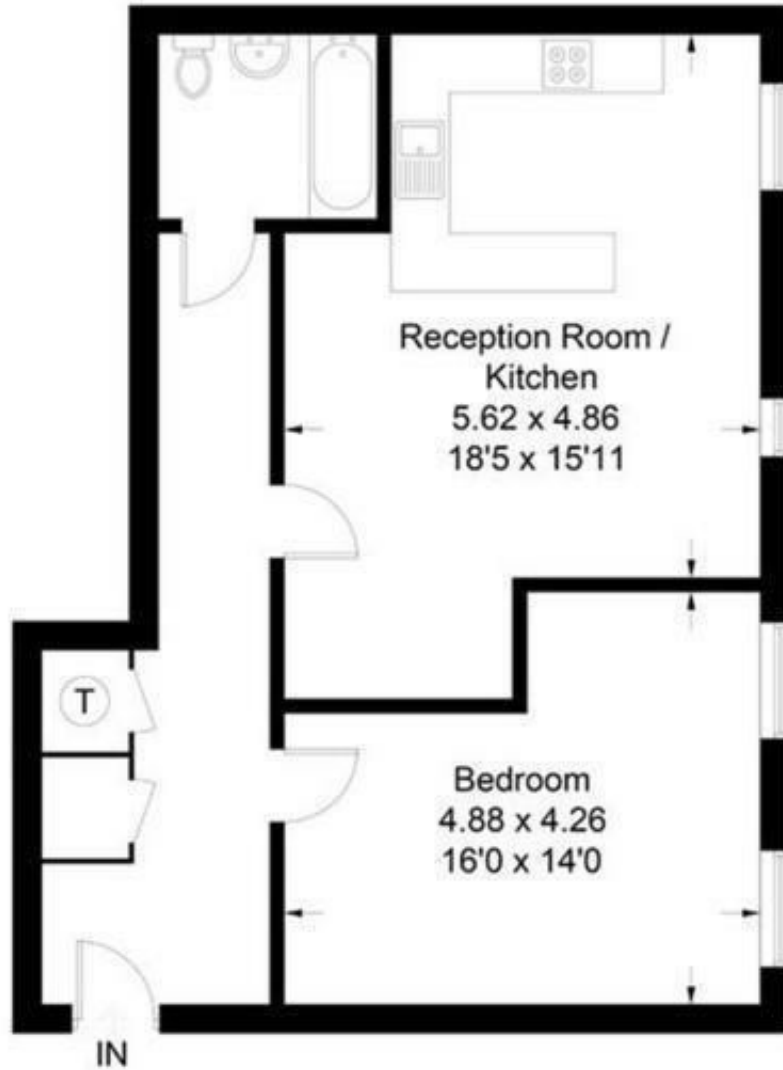


Illustration for identification purposes only, measurements are approximate, not to scale. floorplans4sketch.com © (10659516)

- Viewings accompanied by Chase Buchanan
- Large one bedroom apartment
- Over 700 sq.ft
- 55% shared ownership
- Fourth floor
- Moments from Isleworth station

OFFERED WITH 55% SHARED OWNERSHIP!! A larger than average fourth floor modern apartment, located in this popular development moments from Isleworth train station.

The accommodation comprises an inviting hallway, spacious open plan reception room/kitchen, double bedroom, bathroom and two storage cupboards. Further benefits include an audio/visual entry phone system, lifts to all floors, a long lease and a private residents park and recreation area.

Rent on share - £340 pcm
Service Charge £140 pcm

For more information or to book a viewing, please contact:

020 8758 1755

ChaseBuchanan

7 Odeon Parade, 480 London Road, Isleworth, Middlesex, TW7 4DE

Energy Efficiency Rating		Environmental Impact (CO ₂) Rating	
Current	Desired	Current	Desired
84	87	81	81

Care has been taken in the preparation of these particulars, however, their accuracy is not guaranteed and they do not form part of any contract. Measurements stated must be considered maximum.