



## SINCLAIR ROAD W14

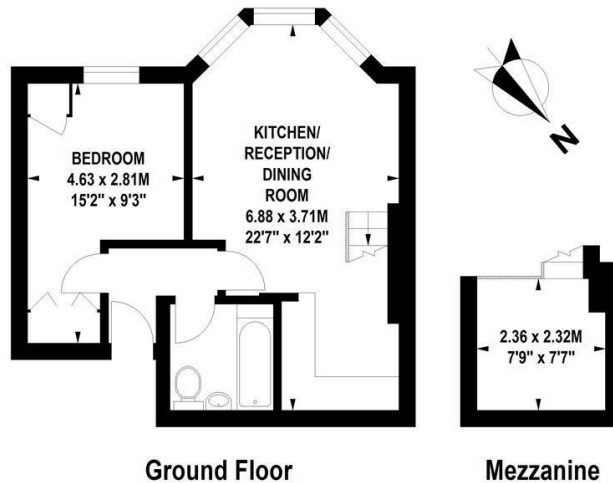




- 1 BEDROOM • OPEN PLAN RECEPTION • FITTED KITCHEN • MEZZANINE STORAGE • CLOSE TO WESTFIELD LONDON • CLOSE TO TRANSPORT AT SHEPHERDS BUSH ROAD AND KENSINGTON OLYMPIA • AVAILABLE 14TH DECEMBER • FURNISHED

Charming one bedroom flat with a large open plan reception that has a bay window overlooking a pretty, established garden which has a big magnolia tree, fitted kitchen, bathroom and mezzanine storage. Located close to Westfield London and the transport links at Shepherds Bush, Olympia and Kensington Olympia Underground and Train Station.

**Sinclair Road, W14**  
**Approximate gross internal area**  
**44 sq m / 474 sq ft**



Floor Plan produced for Finlay Brewer by Mays Floorplans © . Tel 020 3397 4594  
 Illustration for identification purposes only, not to scale  
 All measurements are maximum, and include wardrobes and window bays where applicable

**138 Shepherds Bush Road, London, W6 7PB**  
**Tel: 020 7371 4071    [lettings@finlaybrewer.co.uk](mailto:lettings@finlaybrewer.co.uk)**