



LOFTUS ROAD W12



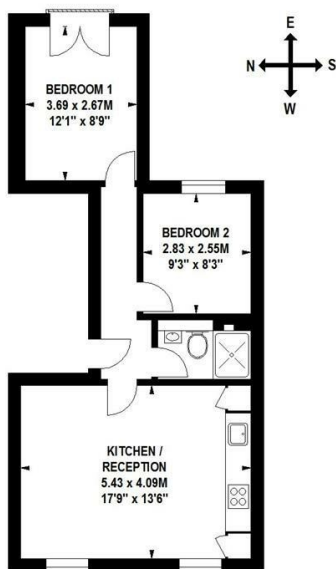


- 2 BEDROOMS • HIGH QUALITY FINISH WITH WOODEN FLOORS • OPEN PLAN RECEPTION • FITTED KITCHEN • CONTEMPORARY SHOWER ROOM • CLOSE TO WHITE CITY HOUSE AND WESTFIELD LONDON • CLOSE TO TRANSPORT • UNFURNISHED • AVAILABLE 8TH DECEMBER

Stunning 2 bedroom flat, recently refurbished to a high standard with wooden floors throughout, open plan reception, stylish fitted kitchen and contemporary shower room. Located close to White City house, Westfield London and the transport links at Shepherds Bush. Unfurnished, available 8th December.

Loftus Road, W12

Approximate Gross Internal Area 48 sq m / 517 sq ft



First Floor

Floor Plan produced for Finlay Brewer by Mays Floorplans ©. Tel 020 3397 4594

Illustration for identification purposes only, not to scale

All measurements are maximum, and include wardrobes and window bays where applicable

This Floorplan has been prepared in accordance with the current edition of the RICS code of measuring practice.

138 Shepherds Bush Road, London, W6 7PB
Tel: 020 7371 4071 lettings@finlaybrewer.co.uk