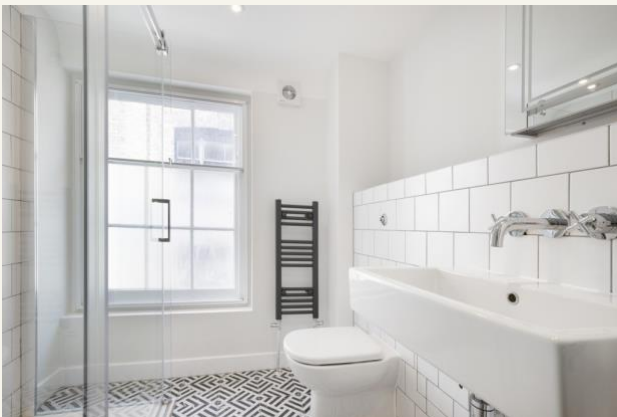


For Rent



People Make Places



Silver Place, Soho W1

2 bedrooms | 797 sq ft

£735 pw





This two-bedroom apartment is located close to Broadwick Street, famed for its popular food market. The apartment has a separate kitchen/reception room, master bedroom, second bedroom and a further mezzanine floor. Available unfurnished at the end of August.

What you need to know

- Two bedrooms
- Third floor (walk up)
- One bathroom
- Recently redecorated
- Pedestrianised street
- Unfurnished
- Top floor
- Sash windows
- Available end of August
- Close to Oxford Circus and Piccadilly Circus





Overview

Positioned on a quiet pedestrianised street, this spacious two double-bedroom apartment on Silver Place is also conveniently located close to Piccadilly and Oxford Circus Underground Stations. The shower room has a modern aesthetic with brick-style wall tiles and black and white ornate floor tiles, while the kitchen is separate from the reception room.

The apartment is on the top floor, walk-up, and has a beautiful fireplace and spacious reception room. There are carpets throughout and an abundance of storage.

The apartment is available at the end of August on an unfurnished basis. Subject to contract and satisfactory references, the landlord offers a three-year lease with a mutual rolling six-month break clause. Westminster City Council tax band: G.



People Make Places

London is collection of inspiring urban villages and one of the most exciting places in the world to live, work & play.

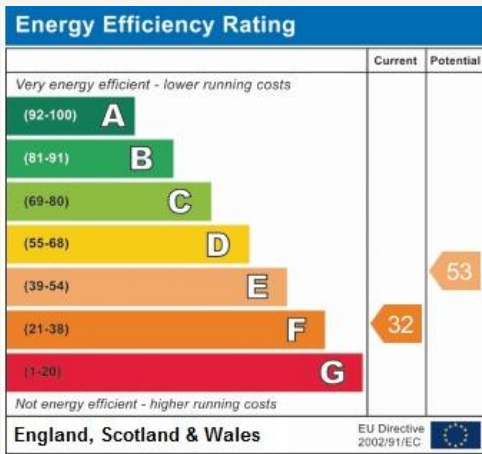
We work with both property owners and their occupiers, sharing the story of these vibrant neighbourhoods, conveying the unique soul & energy to future custodians, the people who'll keep them buzzing.

And unlike many real estate businesses we're not just about buildings, because streets & buildings don't make a neighbourhood.

We're about building relationships, because **people make places**.

MISINTERPRETATION ACT (COPYRIGHT) DISCLAIMER: Tavistock Bow Ltd for themselves and for the vendor(s) of this property whose agents they are, given notice that: 1. These particulars do not constitute, not constitute any part of, an offer or contract. 2. None of the statements contained in these particulars as to the property are to be relied on as statements or representations of fact. 3. Any intending purchaser or lessee must satisfy themselves by inspection or otherwise as to the correctness of each of the statements contained in these particulars. 4. The vendor(s) or lessor(s) do not make or give and neither Tavistock Bow Ltd nor any person in their employment has any authority to make or give any representation or warranty whatever in relation to this property. Finance Act 1989, Unless otherwise stated all prices and rents are quote exclusive of VAT. Property Misrepresentation Act 1991. These details are believed to be correct at the time of compilation but may be subject to subsequent amendment.

Follow us:     @tavistockbow



Silver Place, W1F

Approximate Gross Internal Area 74 sq m / 797 sq ft
Excluding Eaves Storage of Approximately 4 sq m / 43 sq ft

 Under 1.5m head height

1 Reception Room
4.46 x 3.70M
14'8" x 12'2"

2 Kitchen
2.57 x 2.39M
8'5" x 7'10"

3 Bedroom
3.65 x 3.10M
12' x 10'2"

4 Bedroom
3.51 x 2.63M
11'6" x 8'8"

5 Mezzanine
4.40 x 1.71M
14'5" x 5'7"

6 Eaves Storage



Third Floor

Floor Plan produced for Tavistock Bow by Mays Floorplans ©. Tel 020 3397 4564
Illustration for identification purposes only, not to scale.

tavistockbow

21 New Row, Covent Garden,
London, WC2N 4LE

t: 020 7477 2177
e: hello@tavistockbow.com
w: tavistockbow.com



Silver Place, Soho W1