



Cedar Park Road, Batchley, Redditch B97 6DN | £120,000
One Bedroom First Floor Apartment

Features:

- First Floor
- One Bedroom
- Open Plan Lounge/Kitchen/Diner
- Bathroom
- Off Road Parking

Summary:

A superbly decorated, one bedroom apartment located on the first floor of a popular complex situated in Batchley, Redditch.

Description:

The apartment was recently constructed in 2018 and still has a fresh and modern feel throughout. The property is entered via a communal entrance with electronic access. The kitchen is of a modern design with some integrated appliances and space for a table and chairs for more formal dining. The lounge is open plan to the kitchen and benefits from a dual aspect windows providing a scenic view over the town. The bedroom is of good proportion with room for free standing wardrobes. A modern and fresh bathroom completes the flow of the apartment with a bath and shower over with glass screen.

Outside:

The outside of the property has communal areas that are neatly maintained and benefits from allocated parking.

Location:

The town of Redditch offers easy access to motorway links (M42, Jct 2&3) and there are good rail and bus links. There are also excellent leisure facilities along with cultural attractions, including the Kingfisher Shopping Centre, which is one of the largest retail spaces in the UK.



Kitchen/Diner/Lounge:
22' 5" x 11' 11" (6.84m x 3.65m) max

Bedroom:
9' 4" x 14' 4" (2.87m x 4.38m) max

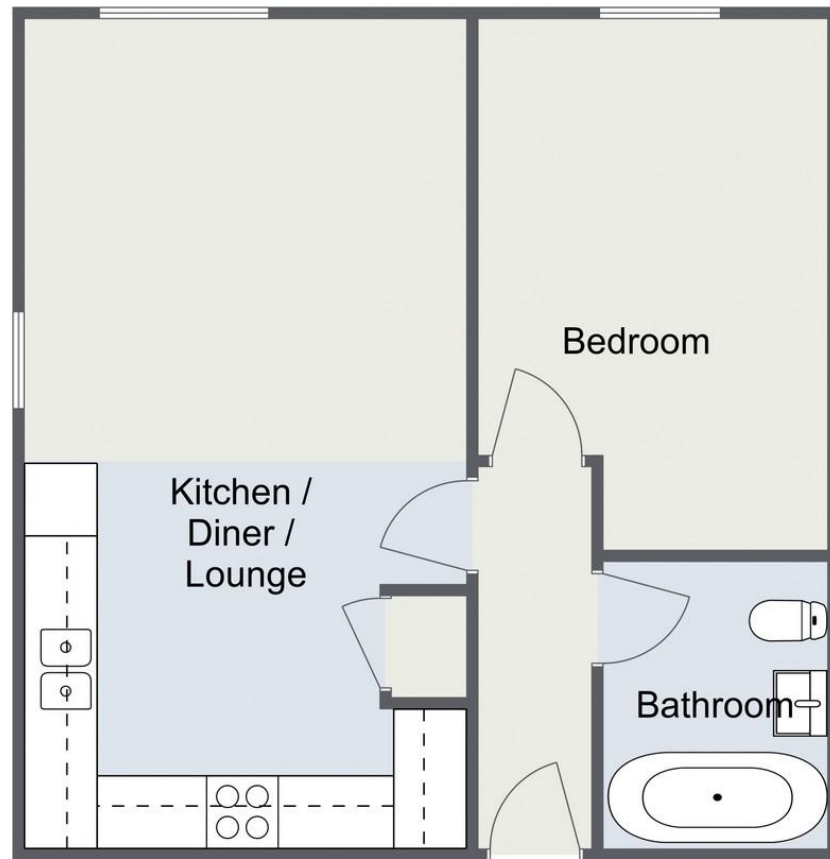
Bathroom:
6' 0" x 7' 8" (1.85m x 2.36m)

EPC: B
Council Tax Band:
Tenure: Leasehold

For more information on Cedar Park Road or to arrange a viewing, please call the Redditch Office on 01527 540 654



Cedar Park Road, Redditch



Total Area Approx
45.4 sq m
488.7 sq ft

For illustrative purposes only. Decorative finishes, fixtures & fittings do not represent the current state of the property. Measurements are approximate & not to scale.
Floor Plans made using RoomSketcher.

Cedar Park Road, Redditch



Total Area Approx
45.4 sq m
488.7 sq ft

For illustrative purposes only. Decorative finishes, fixtures & fittings do not represent the current state of the property. Measurements are approximate & not to scale.
Floor Plans made using RoomSketcher.

Please read the following: These particulars are for general guidance only and are based on information supplied and approved by the seller. Complete accuracy cannot be guaranteed and may be subject to errors and/or omissions. They do not constitute a contract or part of a contract in any way. We are not surveyors or conveyancing experts therefore we cannot and do not comment on the condition, issues relating to title or other legal issues that may affect this property. Interested parties should employ their own professionals to make enquiries before carrying out any transactional decisions. Photographs are provided for illustrative purposes only and the items shown in these are not necessarily included in the sale, unless specifically stated. The mention of any fixtures, fittings and/or appliances does not imply that they are in full efficient working order and they have not been tested. All dimensions are approximate. We are not liable for any loss arising from the use of these details.

Arden Estates | 01527 540 654 | redditch@ardenestates.co.uk | 373 Evesham Road, Redditch, Worcestershire, B97 5JA | ardenestates.co.uk