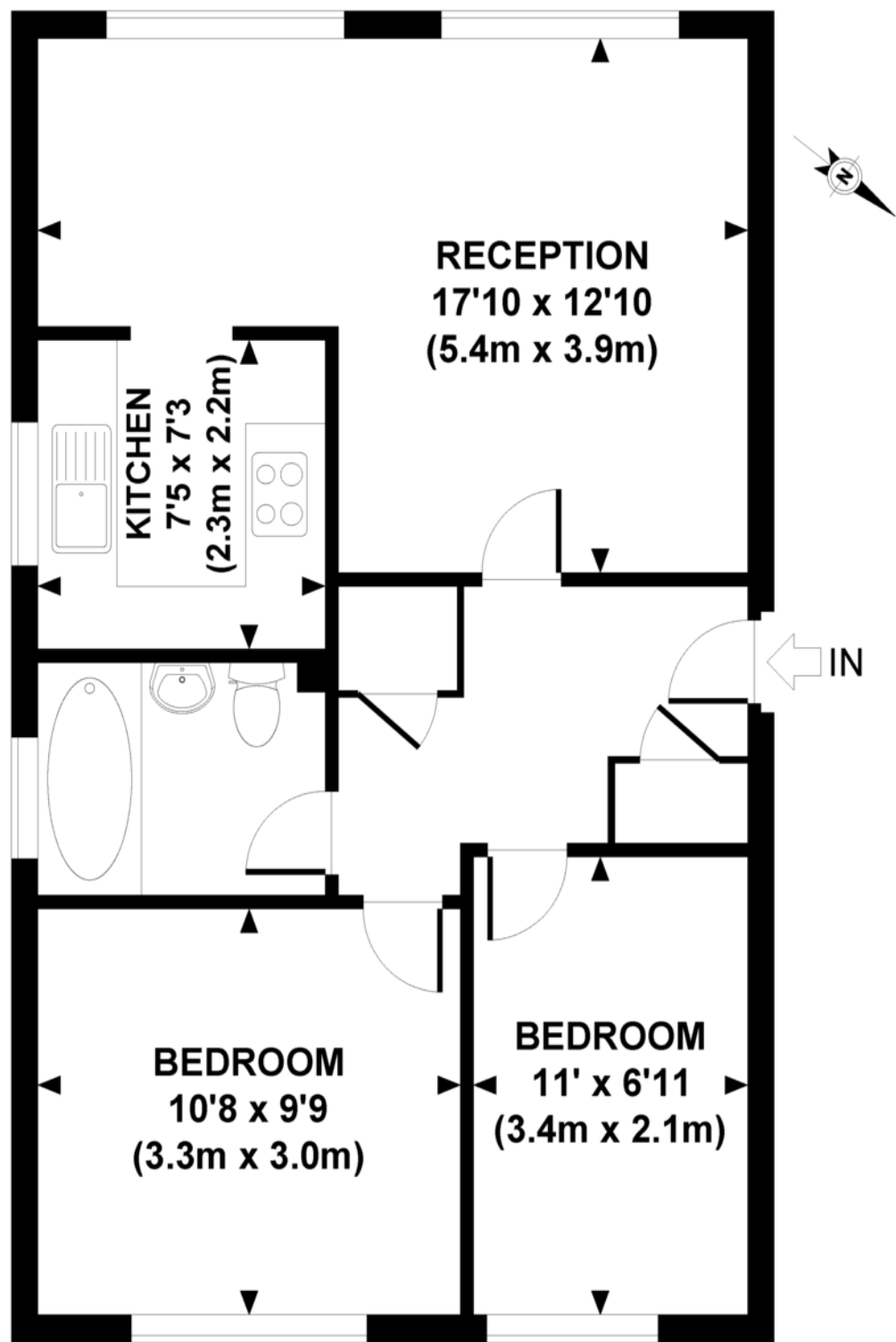


Shaftesbury Gardens, NW10



THIRD FLOOR

APPROXIMATE GROSS INTERNAL AREA 549 SQ FT / 51.0 SQ M

Whilst every attempt has been made to ensure the accuracy of this floor plan; measurements of door, windows, rooms and all other items are approximate. No responsibility is taken for any error, omission or mis-statement. This floor plan is for illustrative purposes only, and should be treated as such.



Shaftesbury Gardens, London, NW10 6LL

£365,000 Leasehold

Key Features

- Fabulous Apartment
- Bright And Spacious
- Top Floor
- Private Parking
- No Chain
- Long Lease
- Call For Early Viewing
- Close To Tube

Description

Situated in an ideal location close to North Acton tube station this simply stunning two bedroom top floor apartment is perfect for investors or first time buyers and is priced for an early sale. On the fourth floor of this popular development the property is offered with a long lease of over 900 years and private parking. Offered with no onwards chain the property must be viewed internally..

