



Fifield Road

Fifield



Sunnybend has recently been extended and refurbished throughout.

The ground floor consists of a living room with a log burner, dining room, study, kitchen with breakfast bar, utility room, two bedrooms and a modern bathroom.

The first floor consists the main bedroom with en suite bathroom and dressing room, and a further double bedroom and WC.

Outside there is driveway parking for several vehicles and access to the garage. The garden backs onto fields, and has a summer house with bar, and a gym.

Fifield is a semi-rural setting located close to shopping facilities. More extensive shopping/leisure amenities may be found in Maidenhead and Windsor.

A direct rail link to London Paddington is available from Maidenhead with Crossrail the new high speed link due to begin running soon. Windsor provides rail connections to London Waterloo and Paddington (via Slough) from the town's two railway stations. The M4 (Junctions 6 and 8/9) provide access to Heathrow Airport, Central London, the West Country and the M25. Schooling opportunities in the area both state and private are extensive and include Lambrook, St Piran's, St Mary's and St Georges in Ascot, Eton College, Royal Holloway University, The Marist, Windsor Boys School, Windsor Girls School and Holyport College. NB. check catchments and admissions policies.

EPC rating D.



Approximate Area = 218.5 sq m / 2352 sq ft (Including Void)

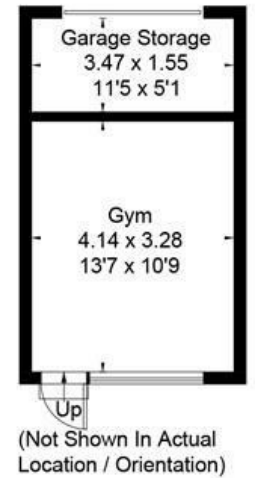
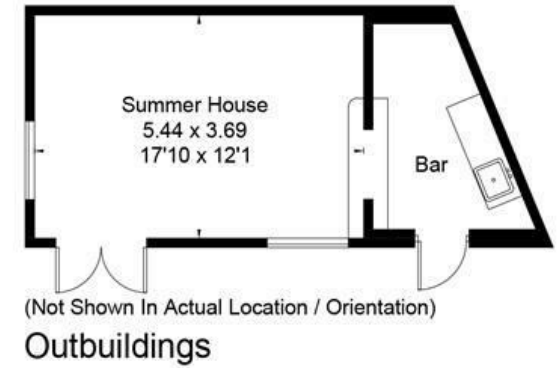
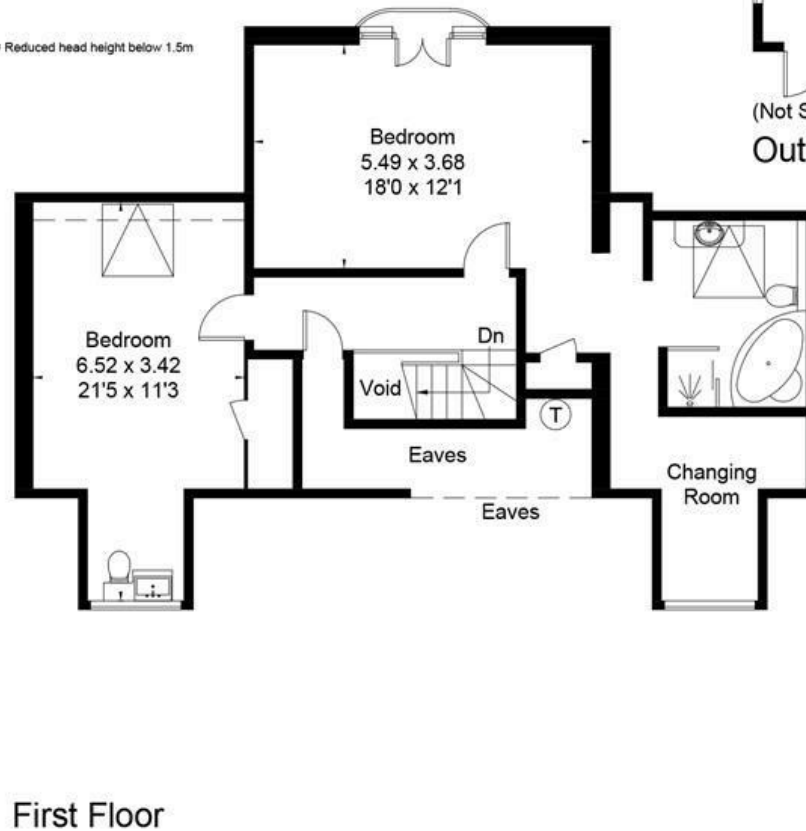
Outbuildings = 46.6 sq m / 502 sq ft

Total = 265.1 sq m / 2854 sq ft

Including Limited Use Area (5.7 sq m / 61 sq ft)



□ = Reduced head height below 1.5m



VIDEO VIEWING AVAILABLE - An extended five bedroom, three bathroom detached property with gated driveway and countryside views.



01344 627777

osborneheath.co.uk · sales@osborneheath.co.uk · lettings@osborneheath.co.uk