



99 The Landway, Bearsted, Maidstone, Kent, ME14 4LD
Price £399,950



A well-planned extended semi-detached family house situated on a popular well-established residential development set well back from The Landway in the Roseacre and Thurnham schools catchment area. The picturesque village of Bearsted is within easy walking distance where there is a delightful Green, several inns, restaurants, sports/leisure clubs, parish church and London line station. A further range of shops are available at the Ashford Road and Madginford centres.

The property was constructed approximately 50 years ago with a later addition and affords spacious and well-presented accommodation, having the benefit of gas fired central heating and UPVC double glazed windows throughout.

AN EXCEPTIONAL PROPERTY HIGHLY RECOMMENDED BY THE SOLE AGENTS.



ON THE GROUND FLOOR

Enclosed Entrance Porch

Double glazed entrance door. Double glazed window. Tiled floor. Part glazed inner door to

Lounge 16'6" x 13' (5.03m x 3.96m)

Double glazed window. Fire recess with glass shelves. Under stairs cupboard. Radiator. Staircase to first floor.

Dining Room 10'9" x 9' (3.28m x 2.74m)

Oak laminate flooring. Radiator. Double glazed French door to garden. Door to

Large extended Kitchen/Breakfast Room 15'3" x 10'3" (4.65m x 3.12m)

Attractive white doored units comprising stainless steel sink with matching drainer. Range of floor cupboards with shelves, drawers and wooden worktops. Matching wall cupboards. Central unit/breakfast bar with wooden worktop. Matching dresser unit with glazed door display cupboards. Larder cupboard. Built-in stainless steel double oven, gas hob and cooker hood. Plumbing for washing machine. Part tiled walls. Ceramic tiled floor. Underfloor heating. Double glazed window and door to rear garden.

Bedroom Four/Study 11'6" x 7' (3.51m x 2.13m)

Double glazed window. Radiator. Oak laminate flooring.

Large Luxury Shower Room En-suite

White suite comprising large shower enclosure with screen door. Pedestal wash hand basin. Low level WC. Tiled walls. Heated towel rail. Underfloor heating. Double glazed skylight.

ON THE FIRST FLOOR

Landing

Double glazed window. Access to insulated roof space.

Principal Bedroom 13' x 9'9" (3.96m x 2.97m)

Double glazed window. Radiator.

Bedroom Two 10'9" x 10'3" (3.28m x 3.12m)

Double glazed window. Radiator. Airing cupboard housing lagged hot water tank.

Bedroom Three 10' x 6'6" (3.05m x 1.98m)

Double glazed window. Radiator. Built-in wardrobe cupboard.

Luxury Bathroom

Modern white suite comprising panelled bath with shower attachment. Low level WC. Pedestal wash hand basin. Heated towel rail. Part tiled walls. Tiled floor. Underfloor heating. Double glazed window.

EXTERNALLY

The property is situated on a good sized plot and is set well back from The Landway. There is a long brick drive and hard standing areas providing parking facilities for up to 4 vehicles.

Gardens

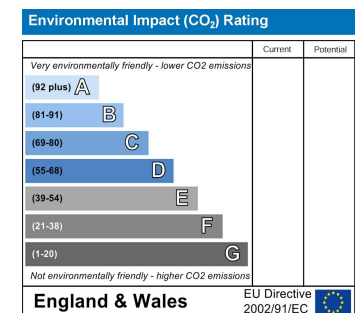
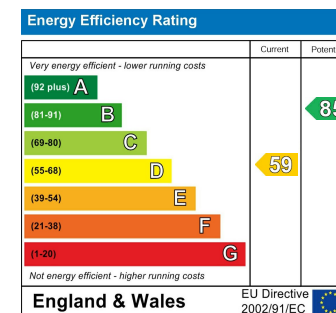
The FRONT GARDEN is laid to lawn with various mature trees, shrubs and raised borders. The REAR GARDEN is fully enclosed and measures approximately 35' x 25' and comprises lawned area with various trees, shrubs and flower borders. Paved patio. Large shed. Outside water and power.

VIEWING

Strictly by arrangement with the Agent's Bearsted Office, 132 Ashford Road, Bearsted, Maidstone, Kent ME14 4LX. Tel 01622 739574.

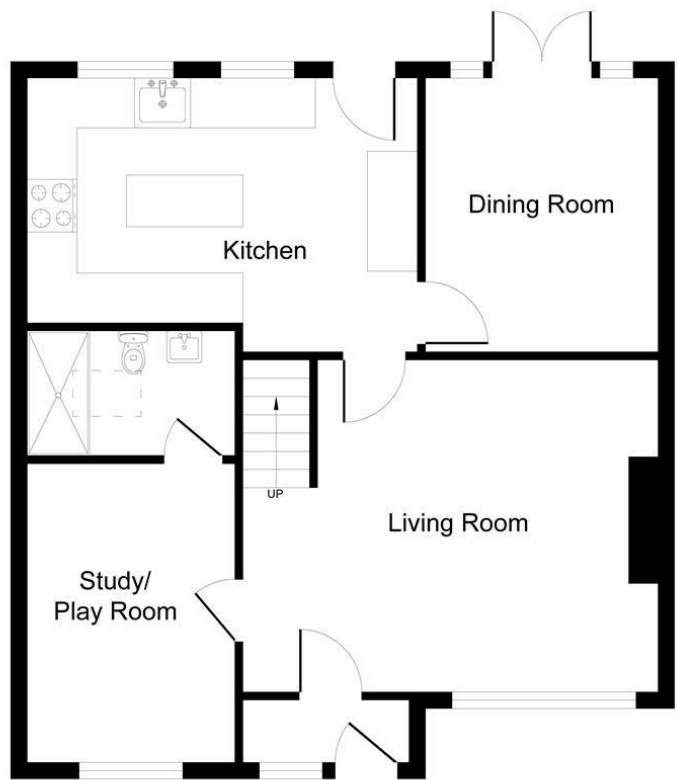
DIRECTIONS

From the Agent's Bearsted Office proceed towards Maidstone on the A20 Ashford Road and, after approximately ¼ mile, bear right into The Landway where the property will be found on the left hand side just before the junction with Birling Avenue



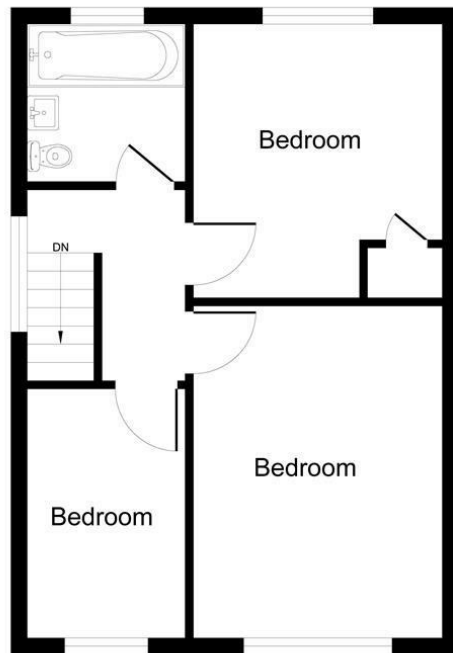
Page & Wells limited for themselves and for the vendors of this property whose agents they are give notice that: 1. These particulars do not constitute any part of, an offer or a contract. 2. All statements contained in these particulars as to this property are made without responsibility on the part of Page & Wells Limited or the Vendor. 3. None of the statements contained in these particulars as to the property is to be relied on as statements or representations of fact. 4. Any intending purchaser must satisfy himself by inspection or otherwise as to the correctness of each of the statements contained in these particulars. 5. The vendor does not make or give, and neither Page & Wells Limited nor any person in their employment has any authority to make or give any representation whatsoever in relation to this property. These particulars are supplied on the understanding that all negotiations are carried out throughout Page & Wells Limited. Properties with a reference prefixes EAA are those which Page & Wells Limited disclose an interest in accordance with the provisions of the Estates Agents Act 1979





Ground Floor

Approximate Gross Internal Area
1044 sq ft - 97 sq m



First Floor

