



22 Churchill Court, Kelham Gardens,
Marlborough, Wiltshire SN8 1LD

birkmyre
property consultants

SELF CONTAINED TWO BEDROOM FIRST FLOOR RETIREMENT APARTMENT WITH, A PRIVATE BALCONY, PARKING AND COMMUNAL GARDENS RUNNING DOWN TO THE RIVER

LOCATION

Kelham Gardens lie to the eastern edge of Marlborough town centre, an historic thriving market town offering a broad selection of shopping and leisure opportunities. Swindon lies 11 miles to the north, Newbury 17 miles and Hungerford 9 miles to the east with Salisbury 22 miles to the south.

Communications are excellent with good road access to the nearby major towns whilst there are regular train services from Swindon, Hungerford, Great Bedwyn and Pewsey providing access to London Paddington. Junction 15 (M4) is 10 miles with junction 14 of the M4 being just to the north of Hungerford. The A303 to the south gives access to the M3.

This popular property has idyllic gardens running down to the river whilst at the same time being within easy walking distance of the High Street.

DESCRIPTION

The property is a two bedroom flat set on the first floor, accessed via a lift, of a block of some 40 properties built by McCarthy and Stone in 2001. This purpose built development for those aged over 60, is a fully serviced building with a lift, communal sitting room, laundry, guest facilities and parking. There is a resident House Manager and for peace of mind a 24 hour Careline System which also controls door entry, and monitoring of the fire alarm.

The accommodation comprises an **Entrance Hall** which is carpeted with a deep cupboard with hot water tank and a further storage cupboard, a **Sitting Room** which is carpeted and leads to a balcony overlooking the communal gardens. The fitted **Kitchen** lies off the sitting room with a range of wall and floor units incorporating a four ring hob and extractor fan, Electrolux Oven and Grill and space for a fridge and a dishwasher. There is a **Double Bedroom** with built in wardrobes and a **Single Bedroom**,

both overlooking the river. The **Shower Room** has a wc, hand basin and large shower cubicle, wall mounted air heater and heated towel rail.

OUTSIDE

There is non-allocated parking to the front which leads to the electric front doors, communal hall and sitting room. The flat has access to the beautiful communal gardens which are mostly lawned running down to and alongside the river beyond.

SERVICES

Mains water, electricity and drainage. Wall mounted storage heaters.

COUNCIL TAX

Band E £2461.51 payable 20/21

EPC C:73

TENURE - Long Leasehold 125 years from 2001.

Occupation can only be by those aged over 60. Annual Ground Rent: £410 p a

The service charge is currently at £3,989.98 p a. This covers a resident House Manager, the Careline system, insurance and maintenance of the building, maintenance, heating and lighting of the common parts, window cleaning, water and sewerage as well as gardening and lift servicing.

LOCAL AUTHORITY

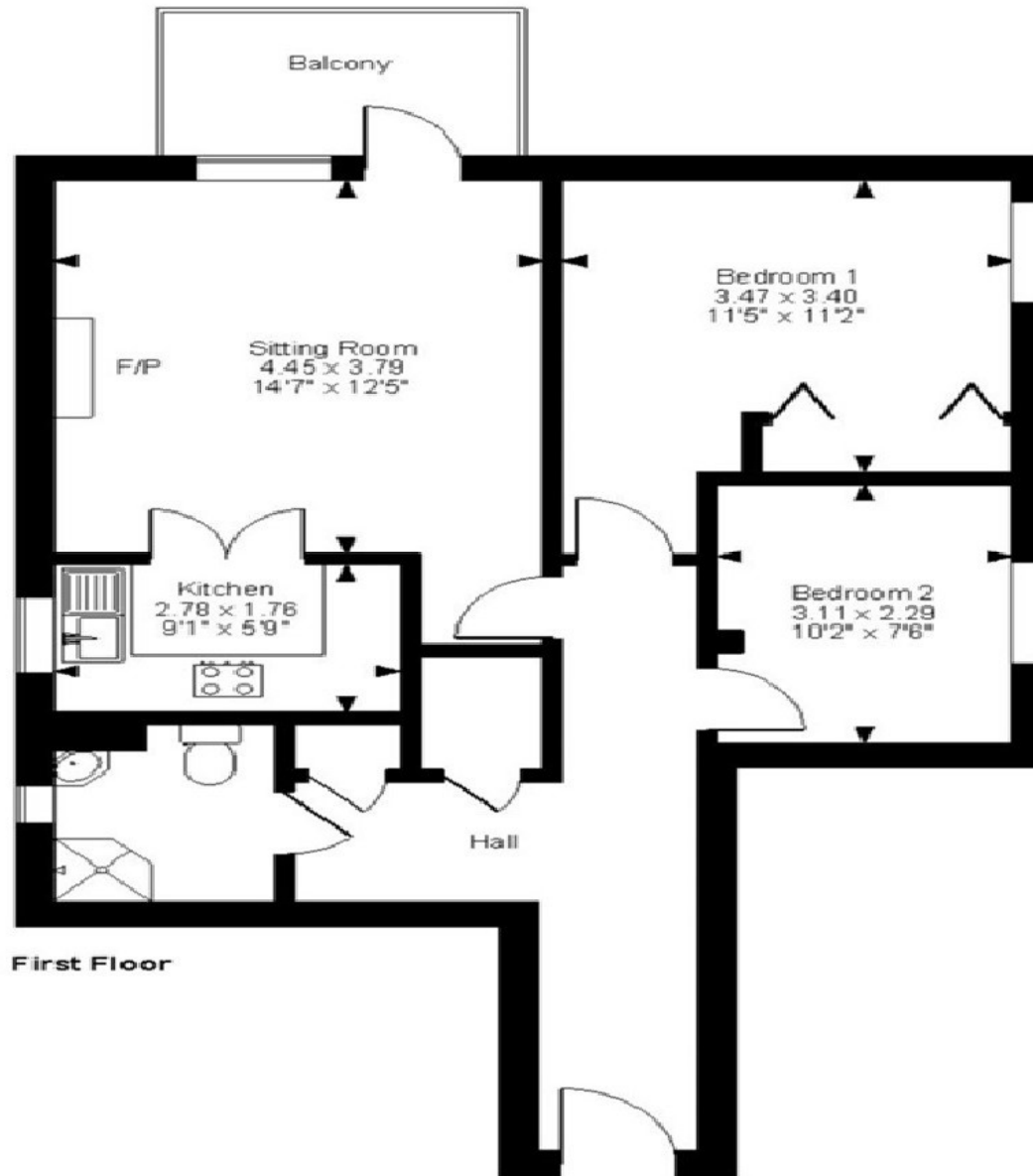
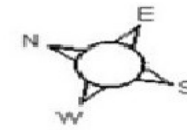
Wiltshire Council Tel: 0300 456 0100, www.wiltshire.gov.uk

DIRECTIONS

From Marlborough High Street head east on New Road and on reaching the roundabout take the second exit and turn left into Kelham Gardens opposite the petrol station. The entrance to Churchill Court will be found on the right hand side.



Churchill Court, Kelham Gardens, Marlborough
Approximate Gross Internal Area
678 sq ft / 63 sq m





Important Notice

Our property particulars do not represent an offer or contract, or part of one. The information given is without responsibility on the part of the agents, seller(s) or lessor(s) and you should not rely on the information as being factually accurate about the property, its condition or its value. Neither Birkmyre Property Consultants nor anyone in its employment or acting on its behalf has authority to make any representation or warranty in relation to this property. We have not carried out a detailed survey, nor tested the services, appliances or fittings at the property. The images shown may only represent part of the property and are as they appeared at the time of being photographed. The areas, measurements and distances are approximate only. Any reference to alterations or use does not mean that any necessary planning permission, building regulation or other consent has been obtained. The VAT position relating to the property may change without notice.



www.birkmyrepc.co.uk
01672 516619

23 The Parade , Marlborough, Wiltshire SN8 1NE

birkmyre
property consultants