



The Ashbury, Plot 32
Corsham, SN13 9LG



This is a computer generated image, details may vary.

The Ashbury, Plot 32
Corsham, SN13 9LG

- FIVE BEDROOMS
- DOUBLE GARAGE
- TWO RECEPTION ROOMS
- KITCHEN/FAMILY Room
- SEPARATE UTILITY
- TWO EN SUITES
- PARKING FOR TWO Cars
- Easy Move available - please ask for details

Guide Price £607,000



Description

Easy Move - Please ask for details

'The Ashbury' is a delightful FIVE BEDROOM DETACHED family home built to a high standard of specification and with a spacious feel throughout.

Internally, the accommodation is arranged around a contemporary KITCHEN/FAMILY ROOM, SEPARATE UTILITY room and cloakroom.

Upstairs, the FIVE bedrooms are complemented by a stylish family bathroom and ENSUITE SHOWER ROOMS to bedrooms one and two.

The Ashbury has a DOUBLE GARAGE and PARKING for TWO cars

IMAGES SHOWN ARE OF PREVIOUS PLOT

Situation

Park Place is but a stone's throw from the quintessential historic market town of Corsham, with its historic high street character buildings and yet providing a full range of everyday facilities, including a wide range of shops, pubs, restaurants etc.

It is home to the heritage of Corsham Court, an English country house in a park designed by Capability Brown, notable for its spectacular gardens and fine art collection. Situated just on the fringe of the scenic Cotswolds, Corsham offers a range of countryside pursuits right on your doorstep with the Corsham lakes nearby providing a number of local walks.

It is rightly highly regarded for its primary and secondary schools and of course there are plenty of sporting, social and cultural activities to suit all needs and tastes. Corsham is just 10 miles by car from bath and 5 miles to the M4 motorway network at Chippenham, which also has its direct rail connection to Reading and London, which, with the arrival of Crossrail, will make the journey to London, whether for work or pleasure, quick and efficient.

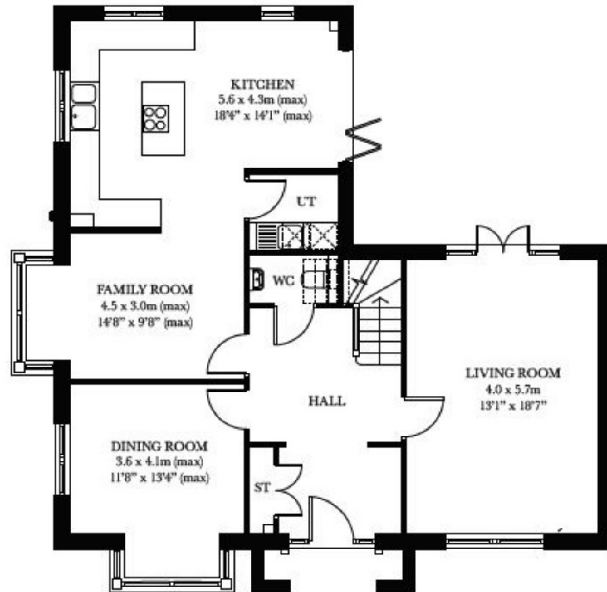
Property Information



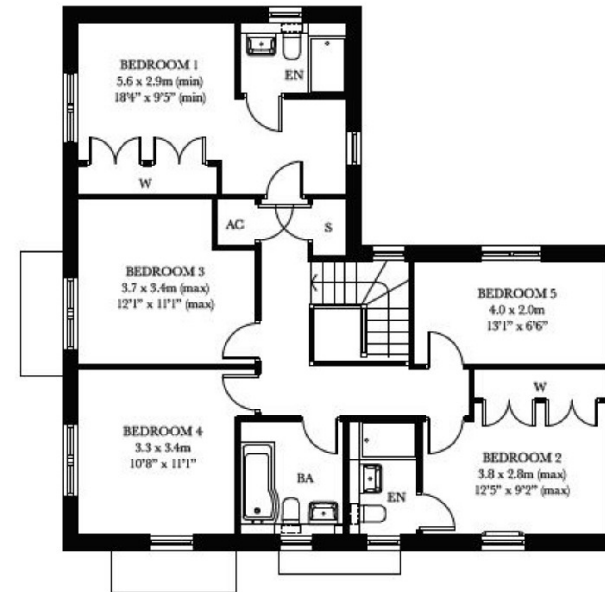


THE ASHBURY

Houses 1, 13, 32, 55, 61, 69, 102, 116, 117, 124 & 128 – Five bedroom homes



Ground Floor



First Floor

The Ashbury is 1,950 sq ft (net) / 181.2 sq m (net) UT = Utility EN = En-suite BA = Bathroom AC = Airing Cupboard WC = Cloakroom ST = Storage W = Wardrobe plans are for reference, details may vary.
Plots 1, 13, 32, 55, 102, 117 & 124 (As above)
Plots 61, 69, 116, & 128 (Opposite hand)

6 High Street, Corsham, Wiltshire, SN13 0HB
Tel: 01249 712039
Fax:
Email: corsham@strakers.co.uk

www.strakers.co.uk

■ Chippenham
■ Corsham

■ New Homes
■ Malmesbury

■ Swindon
■ Devizes

■ Auction
■ Lettings