



1 ROCHESTER PLACE,  
LONDON, NW1  
£2,491 Per Month

T. +44 (0) 20 7935 0011  
E. [enquire@napierwatt.co.uk](mailto:enquire@napierwatt.co.uk)  
[WWW.NAPIERWATT.CO.UK](http://WWW.NAPIERWATT.CO.UK)

**NAPIER WATT**  
PROPERTY CONSULTANTS

## Description

Napier Watt are very pleased, a smart, modern 2 bedroom, 2 bathroom apartment for rent in the highly sought after Rochester Place development, Camden.

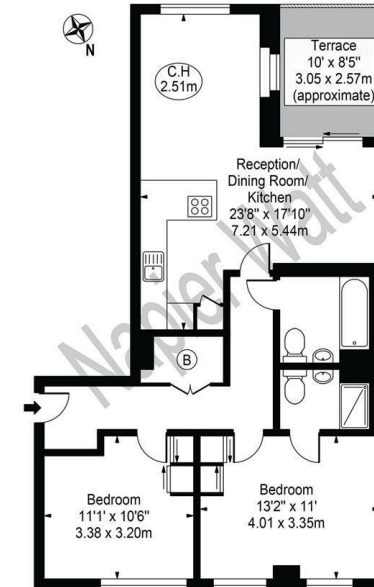
This property benefits from two good sized double bedroom, bathroom, open plan kitchen, dining room

and a private balcony. This light and airy, two bedroom apartment is located on the third floor of a contemporary block. Rochester Place benefits from a concierge service and a lift.

The apartment offers a good sized double bedroom, a modern bathroom and en-suite bathroom for the master bedroom and a spacious, open-plan kitchen and living area with a large, private balcony offering southerly views towards King's Cross.



**Rochester Place, NW1**  
Approx. Gross Internal Area 783 Sq Ft - 72.74 Sq M



**Third Floor**

For Illustration Purposes Only - Not To Scale

This floor plan should be used as a general outline for guidance only and does not constitute in whole or in part an offer or contract. Any intending purchaser or lessee should satisfy themselves by inspection, searches, enquiries and full survey as to the correctness of each statement. Any areas, measurements or distances quoted are approximate and should not be used to value a property or be the basis of any sale or let.

## TERMS

**For Clarification** we wish to inform prospective purchasers that we have prepared these sales particulars as a general guide. We have not carried out a survey, nor tested the services, appliances and specific fittings. Room sizes are approximate and rounded: they are taken between internal wall surfaces and therefore include cupboards/shelves, etc. Accordingly, they should not be relied upon for carpets and furnishings. Formal notice is given that all fixtures and fittings, carpeting, curtains/blinds and kitchen equipment, whether fitted or not, are deemed to be removable by the vendor unless specifically itemised within these sales particulars.

T. +44 (0) 20 7935 0011  
E. [enquire@napierwatt.co.uk](mailto:enquire@napierwatt.co.uk)  
[WWW.NAPIERWATT.CO.UK](http://WWW.NAPIERWATT.CO.UK)

**NAPIER WATT**  
PROPERTY CONSULTANTS