



23 Ragstone Road, Bearsted, Maidstone, Kent, ME15 8PA
Price £325,000

A well-planned semi-detached house situated on an established residential development adjacent to the picturesque Len Valley. The popular village of Bearsted offers a comprehensive range of excellent shops, schools, inns, restaurants, sports/leisure clubs, parish church and London line station.

The property was constructed approximately 50 years ago with a later addition and benefits from gas fired central heating and UPVC double glazed windows throughout. The spacious accommodation is arranged as follows:-



ON THE GROUND FLOOR

Entrance Hall

UPVC double glazed entrance door and window. Radiator. Storage cupboard. Laminate flooring.

Downstairs Cloakroom

White suite comprising low level WC. Wash basin. Radiator. Tiled floor. Double glazed window.

Lounge/Dining Room 28'4 x 11'5 (8.64m x 3.48m)

Double glazed window and sliding doors to garden. Two radiators. Laminate flooring.

Kitchen 10' x 10' (3.05m x 3.05m)

Range of wall and base units incorporating stainless steel sink unit. Built-in electric oven, grill and hob with extractor hood above. Tiled splash back. Space and plumbing for appliances. Laminate flooring. Double glazed window. Double glazed door to garden.

ON THE FIRST FLOOR

Landing

Double glazed window. Access to partly boarded loft space.

Bedroom One 13' x 10'6 (3.96m x 3.20m)

Double glazed window. Radiator. Laminate flooring.

Bedroom Two 11'2 x 10'5 (3.40m x 3.18m)

Double glazed window. Radiator.

Bedroom Three 8'10 x 7'4 (2.69m x 2.24m)

Double glazed window. Radiator. Fitted wardrobes. Laminate flooring.

Bathroom

Modern white suite comprising panelled bath with mixer taps and electronically controlled shower over. Glass shower screen. Low Level WC. Wash hand basin set within vanity unit. Heated towel rail. Carpet tiled flooring. Double glazed window.

EXTERNALLY

Garage 17'2 x 8'4 (5.23m x 2.54m)

Up and over double door to front. Power and light. Gas fired boiler serving central heating and domestic hot water. Consumer unit.

GARDENS

The FRONT GARDEN is laid to lawn with gravelled border. Gated side access. The REAR GARDEN is laid to lawn with shrubs and paved patio.

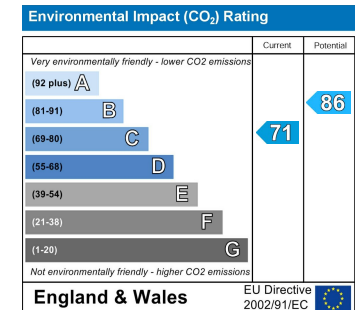
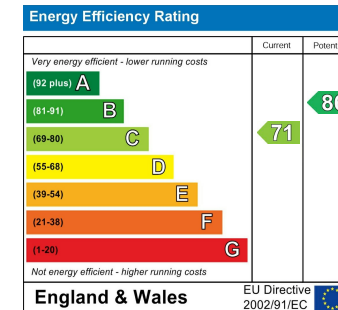
VIEWING

Strictly by arrangement with the Agent's Bearsted Office, 132 Ashford Road, Bearsted, Maidstone, Kent ME14 4LX . Tel: 01622 739574.

DIRECTIONS

From the Agent's Bearsted Office proceed towards Maidstone on the A20 Ashford Road and, after a short distance, turn left into Spot Lane. Take the

second turning on the right into Greensands Road and the first turning on the left into Ragstone Road, where the property will be found on the right hand side.

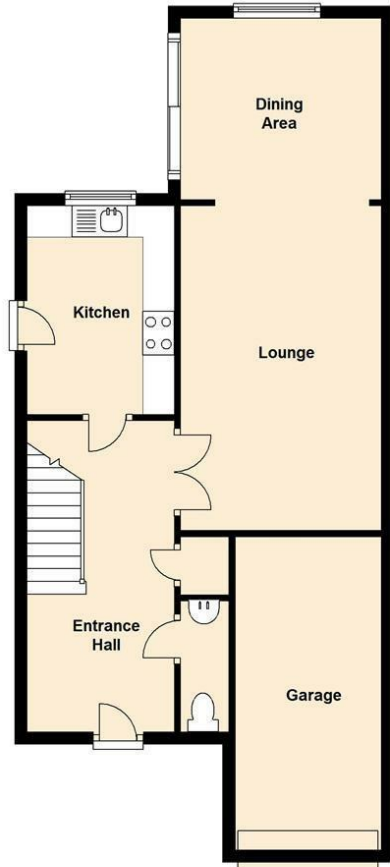


Page & Wells limited for themselves and for the vendors of this property whose agents they are give notice that: 1. These particulars do not constitute any part of, an offer or a contract. 2. All statements contained in these particulars as to this property are made without responsibility on the part of Page & Wells Limited or the Vendor. 3. None of the statements contained in these particulars as to the property is to be relied on as statements or representations of fact. 4. Any intending purchaser must satisfy himself by inspection or otherwise as to the correctness of each of the statements contained in these particulars. 5. The vendor does not make or give, and neither Page & Wells Limited nor any person in their employment has any authority to make or give any representation whatsoever in relation to this property. These particulars are supplied on the understanding that all negotiations are carried out throughout Page & Wells Limited. Properties with a reference prefixes EAA are those which Page & Wells Limited disclose an interest in accordance with the provisions of the Estates Agents Act 1979



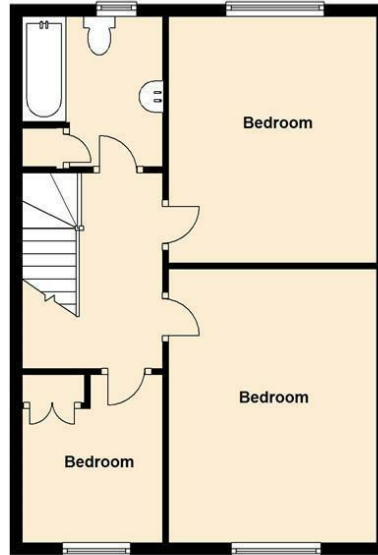
Ground Floor

Approx. 59.7 sq. metres (642.2 sq. feet)



First Floor

Approx. 46.1 sq. metres (496.2 sq. feet)



Total area: approx. 105.8 sq. metres (1138.4 sq. feet)

This floor plan is not to scale. They are for guidance only and accuracy is not guaranteed. Plan produced by Vibrant Energy Matters.
Plan produced using The Mobile Agent.

