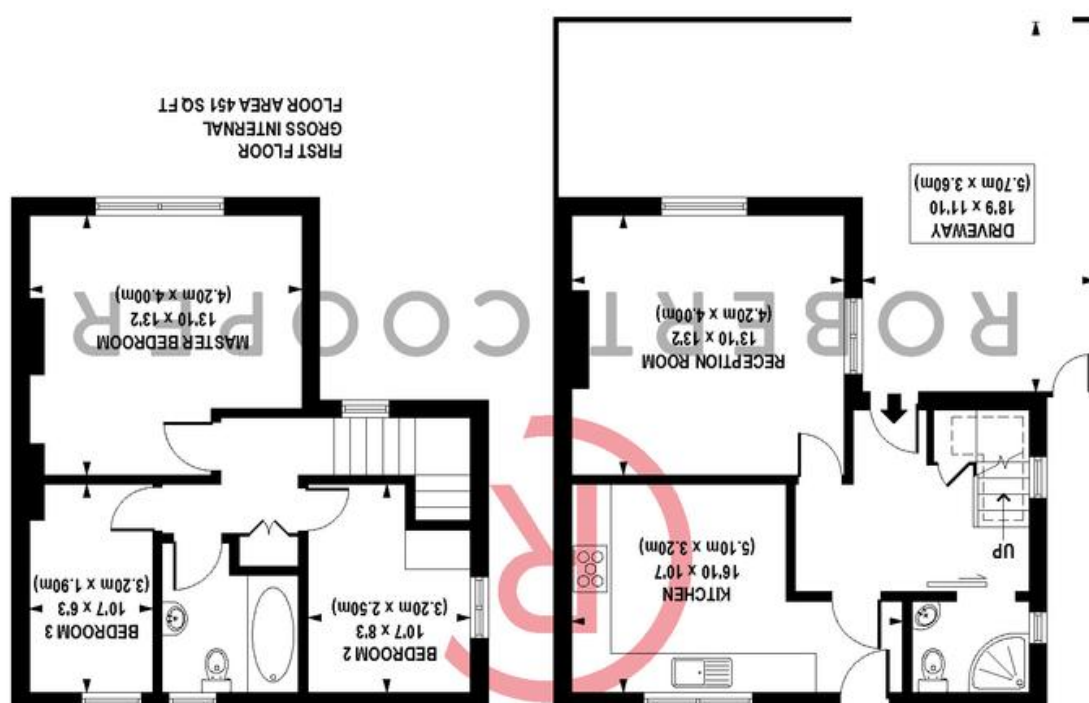


CP CREATIVE
PROPERTY MARKETING

GROUND FLOOR
GROSS INTERNAL
FLOOR AREA 466 SQ FT



ASKING PRICE OF £475,000





A three bedroom semi detached family home in need of refurbishment set on this popular side road with views overlooking Ruislip Lido. Features include no upper chain, off street parking, private rear garden and three bedrooms. The property is 1.5 miles away from Ruislip high street and train station (Metropolitan & Piccadilly Line).

