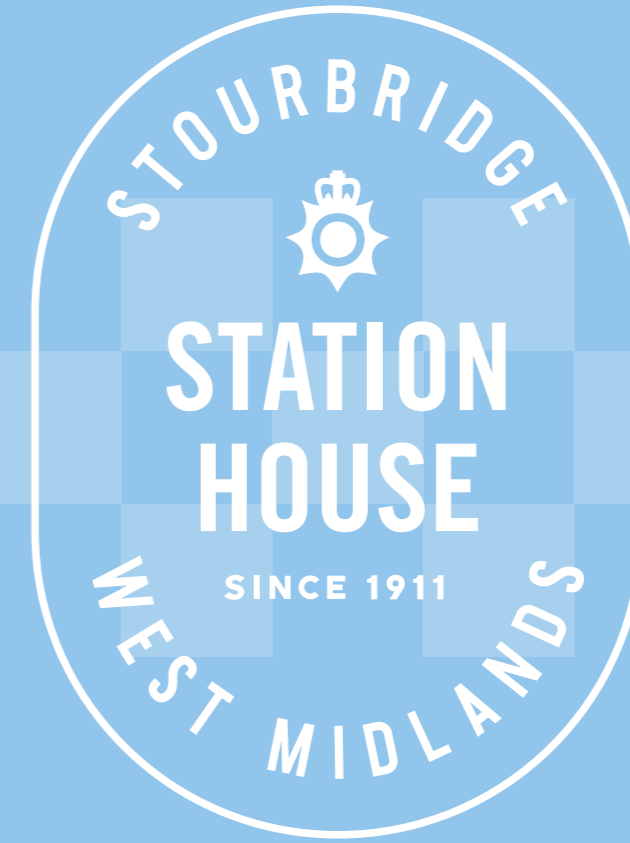


**LOVELL**  
*Reinspired*

PRESENTS



A UNIQUE COLLECTION  
OF 1 & 2 BED APARTMENTS



STOURBRIDGE



STATION  
HOUSE

SINCE 1911

WEST  
MIDLANDS

HELLO

HELLO

HELLO



STOURBRIDGE POLICE STATION TAKEN IN THE 1900s

## WHAT'S ALL THIS THEN

01/02

INTRODUCTION

03/04

HISTORY

05/06

SQV

07/08

LOVELL LIFE

09/12

LOCATION

13/14

SPECIFICATION

17/18

SITE PLAN

19/38

FLOOR PLANS

39/40

HOW TO PURCHASE

41/42

LOVELL REINSPIRED



# AN ARRESTING PLACE TO LIVE

Welcome to Station House in the heart of historic Stourbridge. The former headquarters of the Worcester County Constabulary built in the 1900s, this one-of-a-kind property has been lovingly transformed into 29 conversions and 2 new build luxury one & two bedroom apartments with each different and unique to the last. As such, it is made up of the existing Constable House, Victoria House and Wendy House, as well as the New Build Court House block all designed to complement their surroundings.

The unique architectural features that give Station house its unmistakable character have been maintained as much as possible even converting cells into apartments. This helps create a stunning place to live that embraces the past while offering the very best in modern living.

**LOVELL**  
*Reinspired*



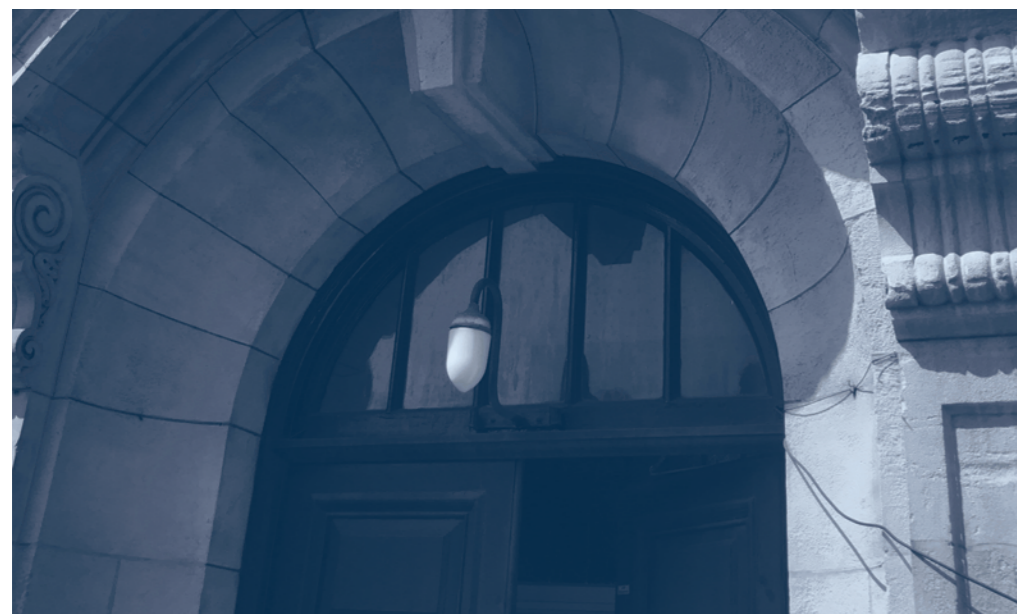
VIEW OF CONSTABLE HOUSE FROM NEW ROAD



HISTORY

# FROM ON THE BEAT TO...

CONSTABLE HOUSE BUILDING DETAIL



CONSTABLE HOUSE BUILDING DETAIL



# UNBEATABLE APARTMENTS

CONSTABLE HOUSE BUILDING DETAIL



CONSTABLE HOUSE BUILDING DETAIL

Station house is a truly landmark building in Stourbridge. It is located just on the edge of the town's shopping centre. As a once working police station, the site's buildings included not just cells, but also an office, accommodation for officers, a custody suite, former magistrates court and rest areas. It even included a bar, lounge and Billiard room for officers to relax and unwind after a hard day on the beat.

As a police station for over a hundred years, the next chapter in this property's history is one where enjoying luxury and quality take over from maintaining law and order.



# EVIDENCE OF STYLE, QUALITY AND VALUE THROUGHOUT

At Lovell, we are proud to create homes of distinction. Places that impress from your first visit, and just as importantly go on impressing long after you've moved into your new home and made it your own. As our commitment to you, every Lovell home has Style, Quality and Value built in. We call it 'SQV' and it's what makes Station House a place you'll be proud to call home.



## INSPIRING STYLE

A Lovell home is well-known for contemporary design and featuring the latest in stylish fixtures and fittings, but that's not all. With the Lovell Inspirations range you can add all sorts of extras to make it truly your own.

## UNRIVALLED QUALITY

We are particularly proud of the superior specification and workmanship every one of our properties offers, with a rigorous attention to detail you'll simply love.

## EXCEPTIONAL VALUE

But most of all, you'll love how surprisingly affordable and easy to own a Lovell home can be, especially with the range of purchase options available.



It's what makes  
our homes unique



# LOVELL LIFE

Whether it's your first home or your next one, we want it to be special. A place that has everything you want and more. This is why every Lovell home is built with one crucial element: pride. Lovell only build high-quality homes and we make customer satisfaction our number one priority.

Our aim is a simple one – to give you only the highest quality from top to bottom. Somewhere that combines skilled craftsmanship and superior building materials. This means that you enjoy extraordinary value for money, as well as a superior and distinctive home. That's not all, our homes come with a 10 year NHBC warranty meaning you can choose a new Lovell home from us with complete confidence.

Most of all, once you step through the front door, we want you to know you're home.



# GET TO KNOW THE NEIGHBOURHOOD

Whether you're a commuter or countryside lover, Stourbridge gives you the best of both worlds. Living here places you just a short journey from Birmingham, Kidderminster, Cannock, Telford and Worcester. While on your doorstep are mile after mile of walks to enjoy, including the Clent Hills and Kinver Edge which attract visitors from far and wide.

STOURBRIDGE TOWN CLOCK



Station House itself is located in a prime location on the edge of Stourbridge town centre. Here you'll find an excellent choice of shops, bars and restaurants with something for everyone. While for a great day's retail therapy, there's also Intu Merry Hill Shopping Centre nearby. With over 200 retail outlets, including all your favourite high street names and department stores, you'll find everything on your shopping list and more. Not to mention a great choice of places to eat such as Nando's, Pizza Express, Hey Potato, Five Guys and Frankie & Benny's.



As well as all this, there is a wealth of sports and recreation facilities on hand. These range from the Crystal Leisure Centre with its pool, sports hall, squash courts and gym, to the local football and cricket clubs. For those who prefer their exercise to be more relaxing, there is a choice of parks nearby as well as both river and canal walks to discover.



If you'd like to travel further afield either for work or leisure, less than a mile away is Stourbridge Junction station with free parking and regular services to Stratford upon Avon, Birmingham and Worcester, as well as further afield with four morning services to London Marylebone by Chiltern Railways.

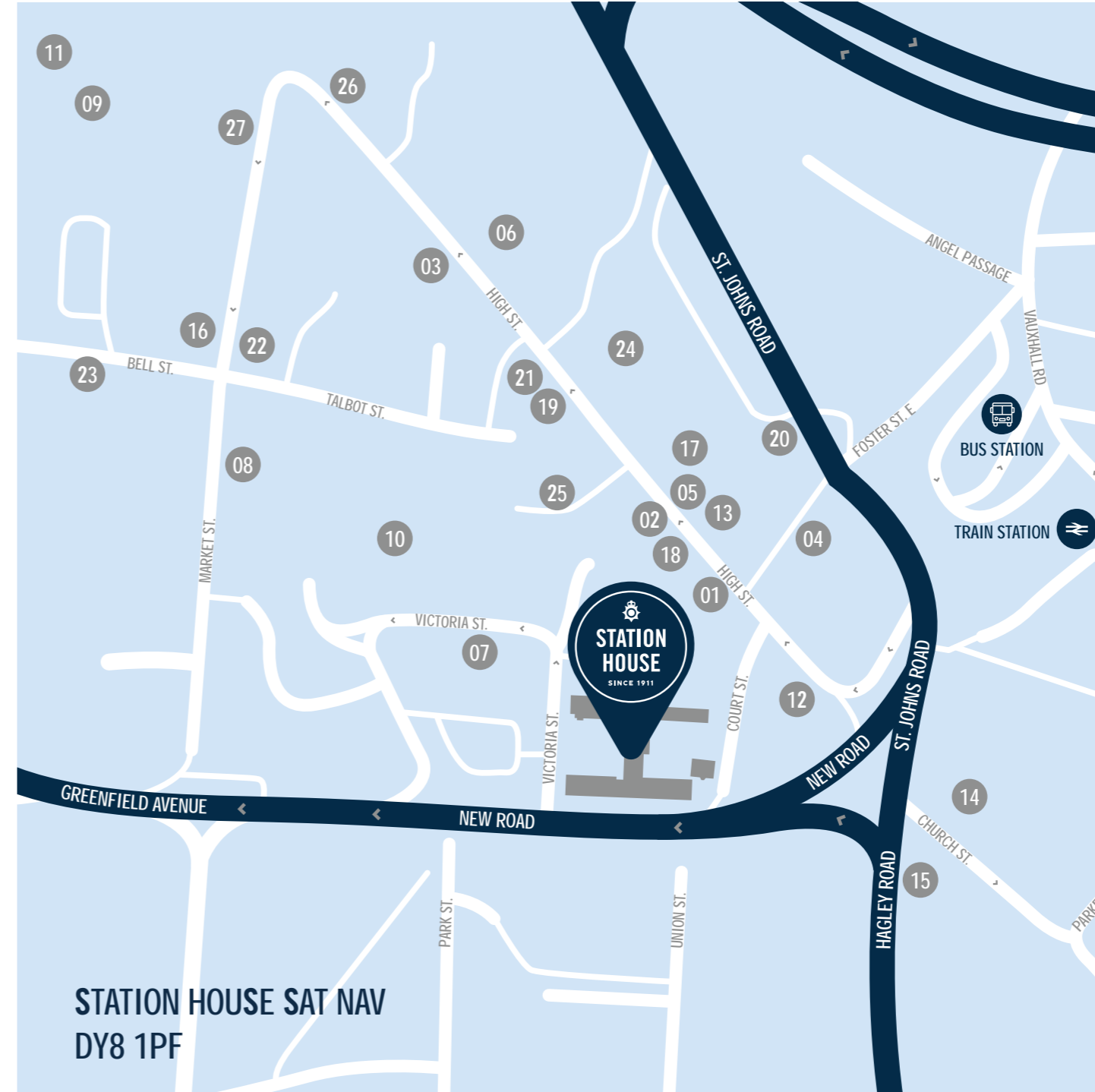


CHURCH OF ST MARY'S STOURBRIDGE



STOURBRIDGE CANAL

TOWN HALL, STOURBRIDGE



STATION HOUSE SAT NAV  
DY8 1PF

PLACES OF INTEREST

- 01. TSB Bank
- 02. HSBC Bank
- 03. Lloyds Bank
- 04. Barclays Bank
- 05. Santander Bank
- 06. Halifax Bank
- 07. Aldi Supermarket
- 08. Waitrose
- 09. Tesco Extra
- 10. Ryemarket Shopping Centre
- 11. Crown Shopping Centre
- 12. The Chequers Inn (Weatherspoon)
- 13. The Stourbridge Lion
- 14. The Old Crispin
- 15. The Swan Inn
- 16. The Bell
- 17. Pizza Express
- 18. Cock N Bull.co
- 19. Greggs
- 20. Delightful Desserts
- 21. Cafe Nero
- 22. Cafe Express
- 23. Crystal Leisure Centre
- 24. Wilko
- 25. Boots Chemist
- 26. Post Office
- 27. Town hall

	<b>BY TRAIN*</b>	
	BIRMINGHAM	23 MINS
	WOLVERHAMPTON	34 MINS
	COVENTRY	60 MINS
	LEICESTER	100 MINS
	NOTTINGHAM	120 MINS
	MANCHESTER	130 MINS

	<b>BY CAR**</b>	
	WOLVERHAMPTON	11.2 MILES
	BIRMINGHAM	13.7 MILES
	COVENTRY	38.2 MILES
	LEICESTER	62.2 MILES
	NOTTINGHAM	69.9 MILES
	MANCHESTER	93.9 MILES

\* Times taken from Trainline and Chiltern Railways please see website for accurate departure travel.  
\*\* Distances taken from Google maps.

# DETAILS WORTH TAKING DOWN

Each apartment at Station House features only the highest specifications throughout. This is all part of what we at Lovell call our SQV – a unique blend of Style, Quality and Value. It sets everything we do above and beyond the norm and ensures that your new home exceeds your expectations.

## ALL OUR APARTMENTS INCLUDE

- Symphony kitchens
- Parking
- Carpets to bedroom
- Oak veneer apartment entrance door
- Wall hung pedestal with concealed cistern
- Amtico flooring to living / dining areas and bathrooms
- Smart electric radiators
- Chrome ironmongery
- LED under cupboard lighting to kitchen
- Integrated kitchen appliances\*
- Secure gated entry
- Window boards, architrave and skirting

\*See specific site drawings



IMAGE SHOWS INDICATIVE INTERIOR

		TO ALL 1 BEDS	TO ALL 2 BEDS	TO APARTMENTS 2, 9, 24 & 25
KITCHENS	Stainless steel 1.5 bowl sink	■		
	Rangemaster 1.5 bowl sink		■	■
	Stainless steel splashback	■	■	
	Zanussi single oven	■		
	Bosch double oven		■	■
	Zanussi 4 burner ceramic hob	■		
	Bosch 5 burner induction hob		■	■
	Electrolux chimney hood	■		
	Bosch extractor hood		■	■
	Zanussi Integrated slimline dishwasher	■		
	Zanussi integrated dishwasher		■	
	Bosch integrated dishwasher			■
	Bosch integrated washer dryer			■
	Zanussi Integrated washer dryer	■	■	
	Zanussi Integrated fridge freezer	■	■	
Bosch integrated fridge freezer			■	
Chrome downlighters	■	■	■	
CLOAKS	Porcelanosa splashback to wash hand basin	■	■	■
	Porcelanosa tiling to window sill	■	■	■
BATHROOMS	Bath Filler	■	■	■
	Mira React ERV shower	■		
	Shaver socket	■	■	■
	Bath screen	■	■	■
	Porcelanosa tiling	■	■	■
	Chrome towel rail	■	■	■
Chrome downlighter	■	■	■	
ENSUITES	Shaver socket		■	■
	Mira agile ERD chrome		■	■
	Porcelanosa tiled shower cubicle		■	■
	Chrome towel rail		■	■
Chrome downlighter		■	■	
INTERNAL FINISHING	5 panel white verticle internal doors	■	■	
	Oak veneer apartment entrance door	■	■	■
	Symphony wardrobes to bed 1		■	■
	Wardrobes to bedroom one		■	■
ELECTRICAL & PLUMBING	Smart electric radiators	■	■	■
	White sockets and switches	■		
	Chrome sockets and switches			■

Specification correct at time of print this however could change at any time – please speak to sales executive for confirmation.





SITE PLAN

ALDI SUPERMARKET

VICTORIA STREET

HIGH STREET

COURT STREET

NEW ROAD



VICTORIA HOUSE  
APARTMENTS 01-09

WENDY HOUSE  
APARTMENTS 10-11

CONSTABLE HOUSE  
APARTMENTS 12-29

COURT HOUSE  
APARTMENTS 30-31

SITE PLAN KEY

- ELECTRIC VEHICLE CHARGING POINT
- BLOCK ENTRANCE
- PV PANELS TO PLOTS 9, 24, 25 and 31

VICTORIA HOUSE

GROUND FLOOR

Apt. 01	1 Bed	580 SQ FT
Apt. 02	2 Bed	884 SQ FT
Apt. 03	2 Bed	696 SQ FT
Apt. 04	1 Bed	469 SQ FT

FIRST FLOOR

Apt. 05	1 Bed	480 SQ FT
Apt. 06	1 Bed	440 SQ FT
Apt. 07	1 Bed	446 SQ FT
Apt. 08	2 Bed	708 SQ FT

SECOND FLOOR

Apt. 09	2 Bed	1035 SQ M
---------	-------	-----------

CONSTABLE HOUSE

GROUND FLOOR

Apt. 12	1 Bed	535 SQ FT
Apt. 13	1 Bed	527 SQ FT
Apt. 14	1 Bed	485 SQ FT
Apt. 15	2 Bed	702 SQ FT
Apt. 16	2 Bed	764 SQ FT
Apt. 17	1 Bed	616 SQ FT
Apt. 18	2 Bed	725 SQ FT
Apt. 19	1 Bed	426 SQ FT
Apt. 20	1 Bed	435 SQ FT

FIRST FLOOR

Apt. 21	1 Bed	569 SQ FT
Apt. 22	1 Bed	522 SQ FT
Apt. 23	1 Bed	585 SQ FT
Apt. 24	2 Bed	1288 SQ FT
Apt. 25	2 Bed	912 SQ FT
Apt. 26	2 Bed	720 SQ FT
Apt. 27	1 Bed	548 SQ FT
Apt. 28	1 Bed	494 SQ FT
Apt. 29	1 Bed	472 SQ FT

WENDY HOUSE BLOCK

GROUND FLOOR

Apt. 10	2 Bed	657 SQ FT
---------	-------	-----------

FIRST FLOOR

Apt. 11	2 Bed	693 SQ FT
---------	-------	-----------

COURT HOUSE

GROUND FLOOR

Apt. 30	2 Bed	610 SQ FT
---------	-------	-----------

FIRST FLOOR

Apt. 31	2 Bed	784 SQ FT
---------	-------	-----------

The development layout plan depicts the intended development mix at the time of going to press, however those intentions may change and a purchaser cannot rely on the details shown on this plan. Landscaping shown is only indicative. Any queries should be raised through the conveyancing process in the usual way. Elevations may vary. Please see external layouts from sales executive.



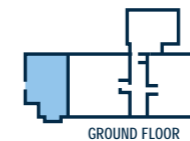


# VICTORIA HOUSE

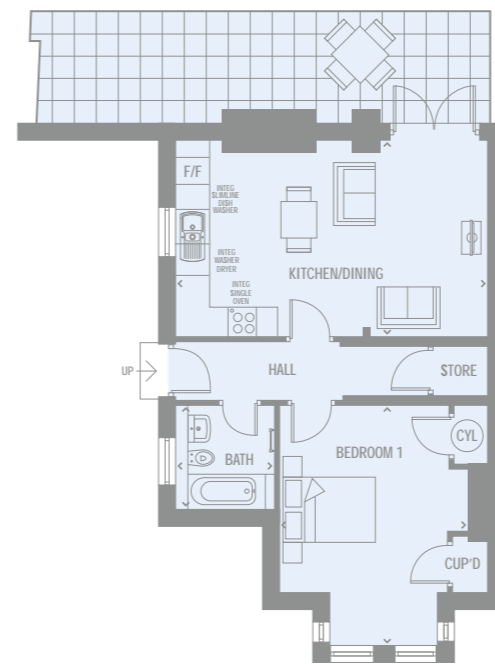
APARTMENTS 01-09



## FLOOR PLANS VICTORIA HOUSE

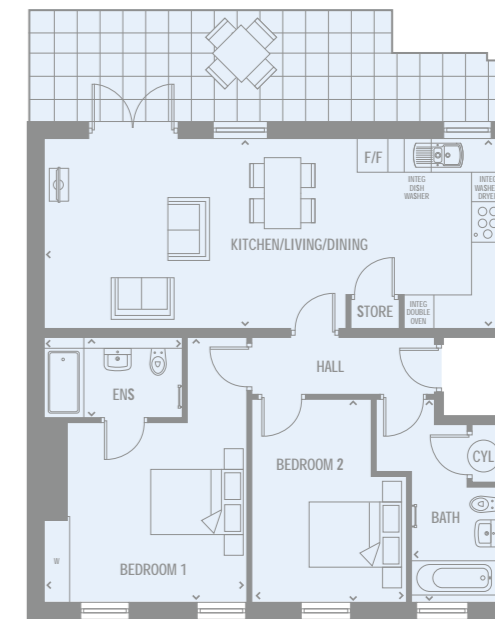


## FLOOR PLANS VICTORIA HOUSE



**APARTMENT 01**    **53.8 SQ M**  
**ONE BED**            **580 SQ FT**

GROUND FLOOR	METRIC (M)	IMPERIAL
Kit/Live/Din	6260mm x 3875mm	20'6" x 12'8"
Bedroom 1	3800mm x 4700mm	12'5" x 15'5"
Bathroom	1900mm x 2015mm	6' 2" x 6'7"



**APARTMENT 02**    **82.1 SQ M**  
**TWO BED**            **884 SQ FT**

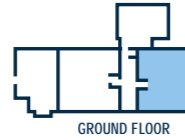
GROUND FLOOR	METRIC (M)	IMPERIAL
Kit/Live/Din	9400mm x 3685mm	30'10" x 12'1"
Bedroom 1	3775mm x 5210mm	12'4" x 17'1"
Bedroom 2	3155mm x 3975mm	10'4" x 13'0"
Bathroom	1900mm x 3350mm	6'2" x 10'11"

KEY < > MEASUREMENT POINTS | W WARDROBE | CYL CYLINDER CUPBOARD | CPD CUPBOARD

Customers should note the computer generated images shown is an illustration of the Victoria House house type. External finishes, landscaping and configuration may vary from plot to plot. Materials used may also differ from plot to plot including render and roof tile colours. Dimensions stated are within 50mm (2") but should not be used as a basis for furnishings, furniture or appliance spaces etc. Dimensions for such purposes must be verified against actual site measurements. Please note the handing of plots, door and window positions may vary from the floor plans shown. Please check individual plot details with our sales team.



FLOOR PLANS  
VICTORIA HOUSE



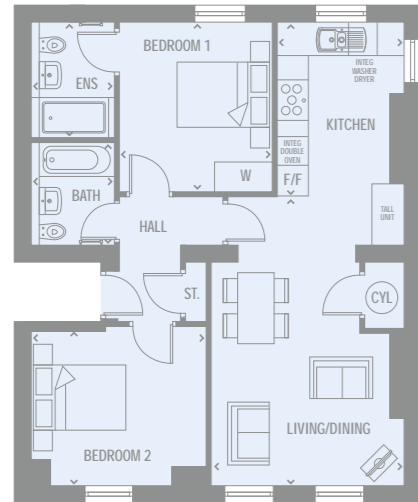
FLOOR PLANS  
VICTORIA HOUSE



FLOOR PLANS  
VICTORIA HOUSE



FLOOR PLANS  
VICTORIA HOUSE



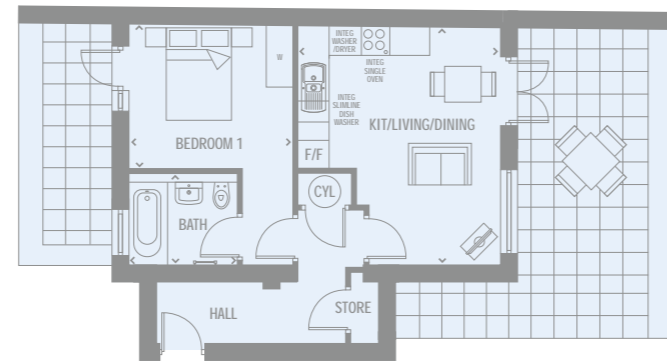
APARTMENT 03  
TWO BED

64.6 SQ M  
696 SQ FT

GROUND FLOOR	METRIC (M)	IMPERIAL
Kitchen	2460mm x 3365mm	8'0" x 11'0"
Living/Dining	3820mm x 5810mm	12'6" x 19'0"
Bedroom 1	3080mm x 3285mm	10'1" x 10'9"
Ensuite	1775mm x 2290mm	5'9" x 7'6"
Bedroom 2	3570mm x 2900mm	11'8" x 9'6"
Bathroom	1775mm x 2160mm	5'9" x 7'1"

KEY <> MEASUREMENT POINTS | W WARDROBE | CYL CYLINDER CUPBOARD | CPD CUPBOARD

Customers should note the computer generated images shown is an illustration of the Victoria House house type. External finishes, landscaping and configuration may vary from plot to plot. Materials used may also differ from plot to plot including render and roof tile colours. Dimensions stated are within 50mm (2") but should not be used as a basis for furnishings, furniture or appliance spaces etc. Dimensions for such purposes must be verified against actual site measurements. Please note the handing of plots, door and window positions may vary from the floor plans shown. Please check individual plot details with our sales team.



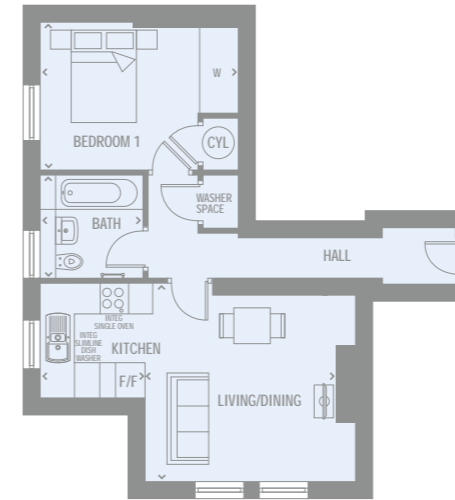
APARTMENT 04  
ONE BED

43.6 SQ M  
469 SQ FT

GROUND FLOOR	METRIC (M)	IMPERIAL
Kit/Live/Din	4085mm x 4790mm	13'4" x 15'8"
Bedroom 1	3250mm x 4895mm	10'8" x 16'0"
Bathroom	2100mm x 1985mm	6'10" x 6'6"

KEY <> MEASUREMENT POINTS | W WARDROBE | CYL CYLINDER CUPBOARD | CPD CUPBOARD

Customers should note the computer generated images shown is an illustration of the Victoria House house type. External finishes, landscaping and configuration may vary from plot to plot. Materials used may also differ from plot to plot including render and roof tile colours. Dimensions stated are within 50mm (2") but should not be used as a basis for furnishings, furniture or appliance spaces etc. Dimensions for such purposes must be verified against actual site measurements. Please note the handing of plots, door and window positions may vary from the floor plans shown. Please check individual plot details with our sales team.



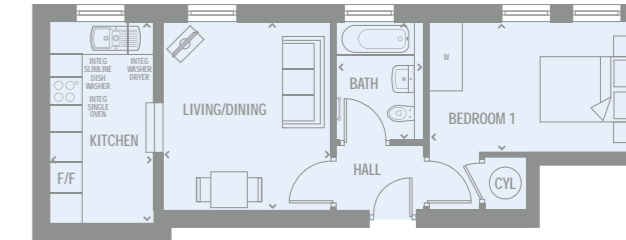
APARTMENT 05  
ONE BED

44.5 SQ M  
480 SQ FT

FIRST FLOOR	METRIC (M)	IMPERIAL
Kitchen	2150mm x 2200mm	7'0" x 7'2"
Living/Dining	3800mm x 3725mm	12'5" x 12'2"
Bedroom 1	3880mm x 2770mm	12'8" x 9'1"
Bathroom	1950mm x 2070mm	6'4" x 6'9"

KEY <> MEASUREMENT POINTS | W WARDROBE | CYL CYLINDER CUPBOARD | CPD CUPBOARD

Customers should note the computer generated images shown is an illustration of the Victoria House house type. External finishes, landscaping and configuration may vary from plot to plot. Materials used may also differ from plot to plot including render and roof tile colours. Dimensions stated are within 50mm (2") but should not be used as a basis for furnishings, furniture or appliance spaces etc. Dimensions for such purposes must be verified against actual site measurements. Please note the handing of plots, door and window positions may vary from the floor plans shown. Please check individual plot details with our sales team.



APARTMENT 06  
ONE BED

40.8 SQ M  
440 SQ FT

FIRST FLOOR	METRIC (M)	IMPERIAL
Kitchen	2070mm x 3940mm	6'9" x 12'11"
Living/Dining	3270mm x 3686mm	10'8" x 12'1"
Bedroom 1	4140mm x 3580mm	13'7" x 11'8"
Bathroom	1750mm x 2350mm	5'8" x 7'8"

KEY <> MEASUREMENT POINTS | W WARDROBE | CYL CYLINDER CUPBOARD | CPD CUPBOARD

Customers should note the computer generated images shown is an illustration of the Victoria House house type. External finishes, landscaping and configuration may vary from plot to plot. Materials used may also differ from plot to plot including render and roof tile colours. Dimensions stated are within 50mm (2") but should not be used as a basis for furnishings, furniture or appliance spaces etc. Dimensions for such purposes must be verified against actual site measurements. Please note the handing of plots, door and window positions may vary from the floor plans shown. Please check individual plot details with our sales team.

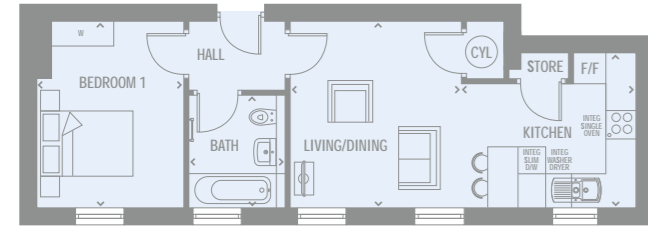
FLOOR PLANS  
VICTORIA HOUSE



FLOOR PLANS  
VICTORIA HOUSE

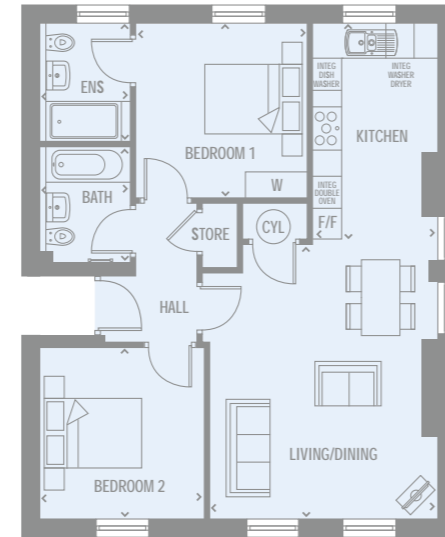


FLOOR PLANS  
VICTORIA HOUSE



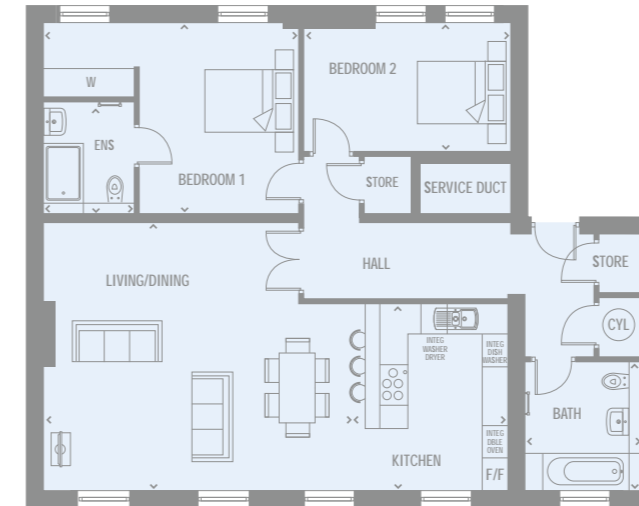
APARTMENT 07  
ONE BED 41.4 SQ M  
446 SQ FT

FIRST FLOOR	METRIC (M)	IMPERIAL
Kitchen	2575mm x 2980mm	8'5" x 9'9"
Living/Dining	4270mm x 3595mm	14'0" x 11'9"
Bedroom 1	3000mm x 3595mm	9'10" x 11'9"
Bathroom	1950mm x 2130mm	6'4" x 6'11"



APARTMENT 08  
TWO BED 65.7 SQ M  
708 SQ FT

GROUND FLOOR	METRIC (M)	IMPERIAL
Kitchen	2295mm x 4000mm	7'6" x 13'1"
Living/Dining	4160mm x 5070mm	13'7" x 16'7"
Bedroom 1	3255mm x 3210mm	10'8" x 10'6"
Ensuite	1790mm x 2195mm	5'10" x 7'2"
Bedroom 2	3055mm x 3120mm	10'0" x 10'2"
Bathroom	1790mm x 2190mm	5'10" x 7'2"



PENTHOUSE  
APARTMENT 09  
TWO BED 96.2 SQ M  
1035 SQ FT

SECOND FLOOR	METRIC (M)	IMPERIAL
Kitchen	3030mm x 3620mm	9'11" x 11'10"
Living/Dining	6295mm x 5210mm	20'7" x 17'1"
Bedroom 1	5110mm x 3700mm	16'9" x 12'1"
Ensuite	1800mm x 2200mm	5'10" x 7'2"
Bedroom 2	4115mm x 2360mm	13'6" x 7'8"
Bathroom	2310mm x 2505mm	7'6" x 8'2"

KEY <> MEASUREMENT POINTS | W WARDROBE | CYL CYLINDER CUPBOARD | CPD CUPBOARD

Customers should note the computer generated images shown is an illustration of the Victoria House house type. External finishes, landscaping and configuration may vary from plot to plot. Materials used may also differ from plot to plot including render and roof tile colours. Dimensions stated are within 50mm (2") but should not be used as a basis for furnishings, furniture or appliance spaces etc. Dimensions for such purposes must be verified against actual site measurements. Please note the handing of plots, door and window positions may vary from the floor plans shown. Please check individual plot details with our sales team.

KEY <> MEASUREMENT POINTS | W WARDROBE | CYL CYLINDER CUPBOARD | CPD CUPBOARD

Customers should note the computer generated images shown is an illustration of the Victoria House house type. External finishes, landscaping and configuration may vary from plot to plot. Materials used may also differ from plot to plot including render and roof tile colours. Dimensions stated are within 50mm (2") but should not be used as a basis for furnishings, furniture or appliance spaces etc. Dimensions for such purposes must be verified against actual site measurements. Please note the handing of plots, door and window positions may vary from the floor plans shown. Please check individual plot details with our sales team.





# WENDY HOUSE

APARTMENTS 10-11

IT'D BE A CRIME NOT TO FIND OUT MORE  
**STATION HOUSE**  
CALL 0121 5145 999



## FLOOR PLANS WENDY HOUSE

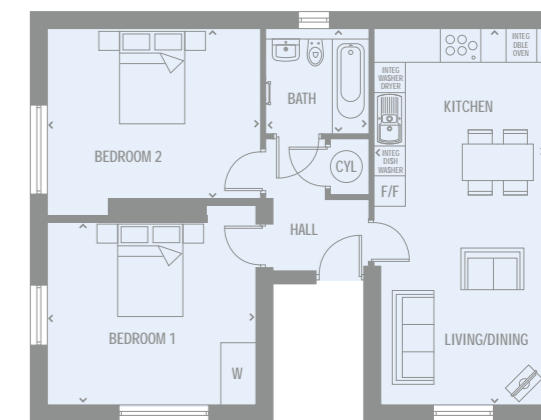


## FLOOR PLANS WENDY HOUSE



**APARTMENT 10** 61 SQ M  
**TWO BED** 657 SQ FT

GROUND FLOOR	METRIC (M)	IMPERIAL
Kit/Live/Din	3955mm x 7275mm	12'11" x 23'10"
Bedroom 1	4050mm x 3545mm	13'3" x 11'7"
Bedroom 2	3410mm x 3315mm	11'2" x 10'10"
Bathroom	2100mm x 2075mm	6'10" x 6'9"



**APARTMENT 11** 64.3 SQ M  
**TWO BED** 693 SQ FT

FIRST FLOOR	METRIC (M)	IMPERIAL
Kit/Live/Din	3260mm x 7275mm	10'8" x 23'10"
Bedroom 1	4085mm x 3900mm	13'4" x 12'9"
Bedroom 2	4145mm x 3660mm	13'7" x 12'0"
Bathroom	1985mm x 2065mm	6'6" x 6'9"

KEY <> MEASUREMENT POINTS | W WARDROBE | CYL CYLINDER CUPBOARD | CPD CUPBOARD

Customers should note the computer generated images shown is an illustration of the Victoria House house type. External finishes, landscaping and configuration may vary from plot to plot. Materials used may also differ from plot to plot including render and roof tile colours. Dimensions stated are within 50mm (2") but should not be used as a basis for furnishings, furniture or appliance spaces etc. Dimensions for such purposes must be verified against actual site measurements. Please note the handing of plots, door and window positions may vary from the floor plans shown. Please check individual plot details with our sales team.





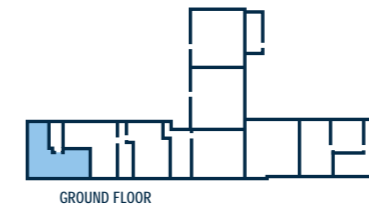


# CONSTABLE HOUSE

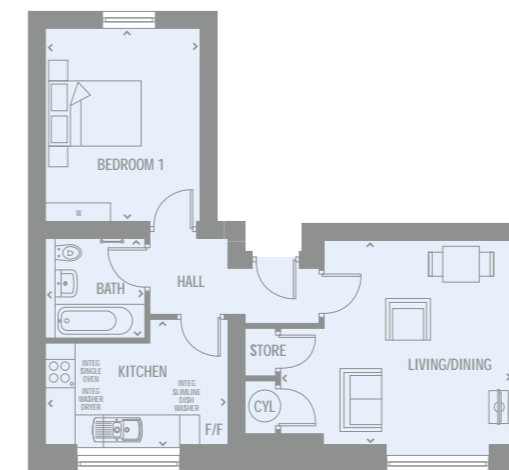
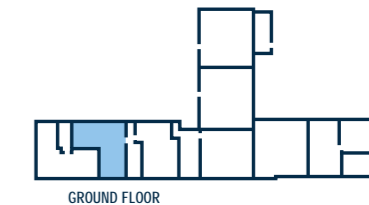
APARTMENTS 12-29



### FLOOR PLANS CONSTABLE HOUSE



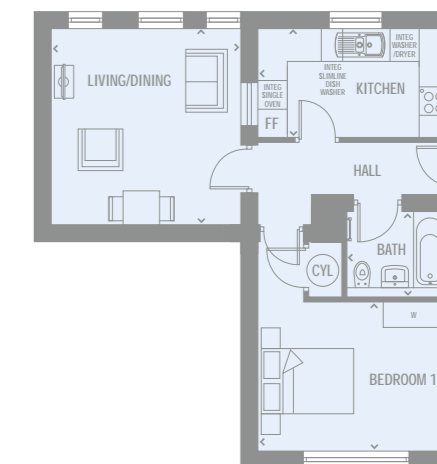
### FLOOR PLANS CONSTABLE HOUSE



### APARTMENT 12 ONE BED

49.7 SQ M  
535 SQ FT

GROUND FLOOR	METRIC (M)	IMPERIAL
Kitchen	3540mm x 2590mm	11'7" x 8'6"
Living/Dining	4755mm x 4185mm	15'7" x 13'8"
Bedroom 1	2940mm x 3875mm	9'7" x 12'8"
Bathroom	1850mm x 2000mm	6'0" x 6'6"



### APARTMENT 13 ONE BED

48.9 SQ M  
527 SQ FT

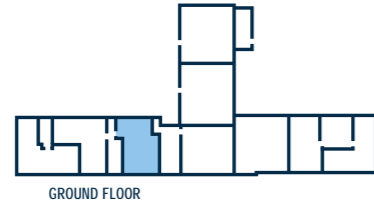
GROUND FLOOR	METRIC (M)	IMPERIAL
Kitchen	3915mm x 2125mm	12'10" x 6'11"
Living/Dining	3970mm x 3890mm	13'11" x 12'9"
Bedroom 1	3910mm x 4185mm	12'9" x 13'8"
Bathroom	2085mm x 1750mm	6'10" x 5'8"

KEY MEASUREMENT POINTS | W WARDROBE | CYL CYLINDER CUPBOARD | CPD CUPBOARD

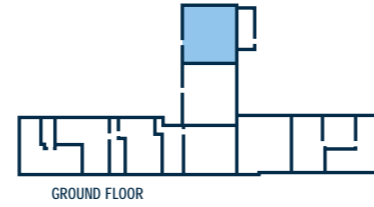
Customers should note the computer generated images shown is an illustration of the Victoria House house type. External finishes, landscaping and configuration may vary from plot to plot. Materials used may also differ from plot to plot including render and roof tile colours. Dimensions stated are within 50mm (2") but should not be used as a basis for furnishings, furniture or appliance spaces etc. Dimensions for such purposes must be verified against actual site measurements. Please note the handing of plots, door and window positions may vary from the floor plans shown. Please check individual plot details with our sales team.



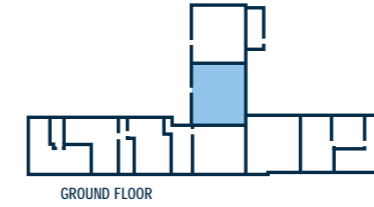
FLOOR PLANS  
CONSTABLE HOUSE



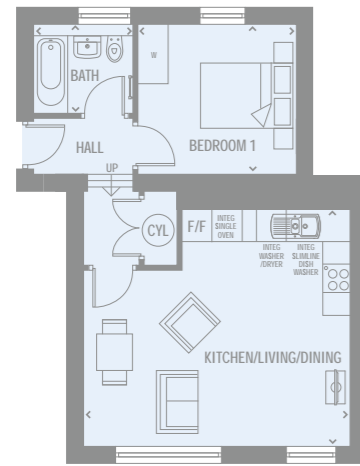
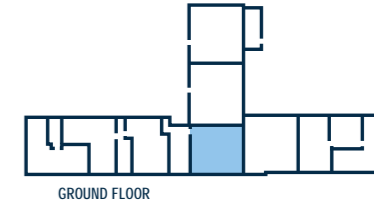
FLOOR PLANS  
CONSTABLE HOUSE



FLOOR PLANS  
CONSTABLE HOUSE

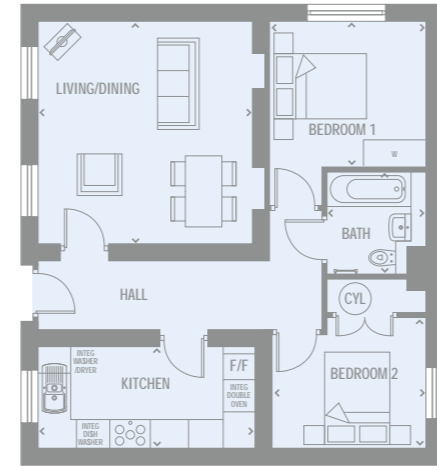


FLOOR PLANS  
CONSTABLE HOUSE



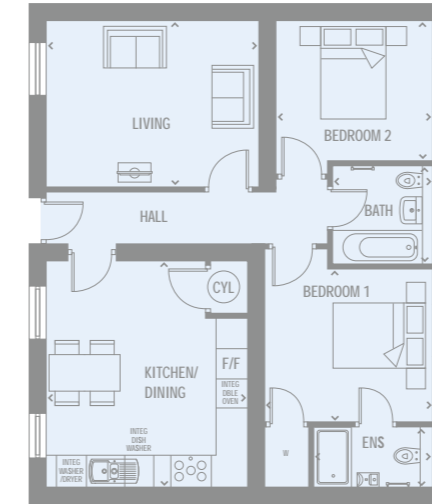
APARTMENT 14  
ONE BED 45 SQ M  
485 SQ FT

GROUND FLOOR	METRIC (M)	IMPERIAL
Kit/Live/Din	5480mm x 4750mm	17'11" x 15'7"
Bedroom 1	3195mm x 2950mm	10'5" x 9'8"
Bathroom	2085mm x 1715mm	6'10" x 5'7"



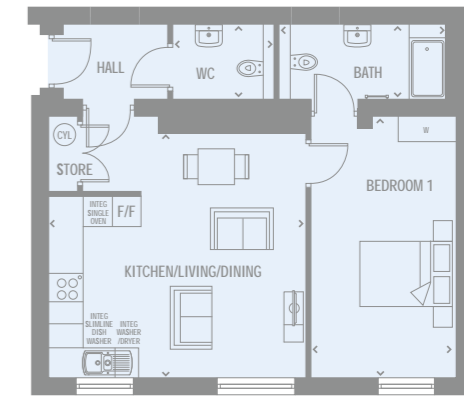
APARTMENT 15  
TWO BED 65.2 SQ M  
702 SQ FT

GROUND FLOOR	METRIC (M)	IMPERIAL
Kitchen	4170mm x 2100mm	13'8" x 6'10"
Living/Dining	4185mm x 4360mm	13'8" x 14'3"
Bedroom 1	3015mm x 3835mm	9'10" x 12'7"
Bedroom 2	3015mm x 2705mm	9'10" x 8'10"
Bathroom	1865mm x 2065mm	6'1" x 6'9"



APARTMENT 16  
TWO BED 70.9 SQ M  
764 SQ FT

GROUND FLOOR	METRIC (M)	IMPERIAL
Kitchen//Dining	3870mm x 4590mm	12'8" x 15'0"
Living	4165mm x 3315mm	13'8" x 10'10"
Bedroom 1	3315mm x 3540mm	10'10" x 11'7"
Ensuite	2335mm x 1215mm	7'7" x 3'11"
Bedroom 2	3015mm x 2805mm	9'10" x 9'2"
Bathroom	1905mm x 2000mm	6'3" x 6'6"



APARTMENT 17  
ONE BED 57.2 SQ M  
616 SQ FT

GROUND FLOOR	METRIC (M)	IMPERIAL
Kit/Live/Din	5175mm x 4720mm	16'11" x 15'5"
Bedroom 1	2950mm x 5200mm	9'8" x 17'0"
Bathroom	3380mm x 1500mm	11'1" x 4'11"

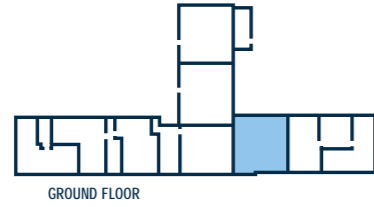
KEY <> MEASUREMENT POINTS | W WARDROBE | CYL CYLINDER CUPBOARD | CPD CUPBOARD

Customers should note the computer generated images shown is an illustration of the Victoria House house type. External finishes, landscaping and configuration may vary from plot to plot. Materials used may also differ from plot to plot including render and roof tile colours. Dimensions stated are within 50mm (2") but should not be used as a basis for furnishings, furniture or appliance spaces etc. Dimensions for such purposes must be verified against actual site measurements. Please note the handing of plots, door and window positions may vary from the floor plans shown. Please check individual plot details with our sales team.

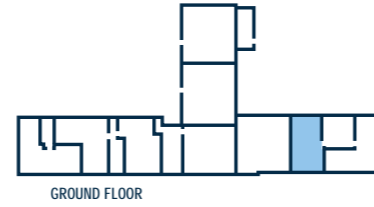
KEY <> MEASUREMENT POINTS | W WARDROBE | CYL CYLINDER CUPBOARD | CPD CUPBOARD

Customers should note the computer generated images shown is an illustration of the Victoria House house type. External finishes, landscaping and configuration may vary from plot to plot. Materials used may also differ from plot to plot including render and roof tile colours. Dimensions stated are within 50mm (2") but should not be used as a basis for furnishings, furniture or appliance spaces etc. Dimensions for such purposes must be verified against actual site measurements. Please note the handing of plots, door and window positions may vary from the floor plans shown. Please check individual plot details with our sales team.

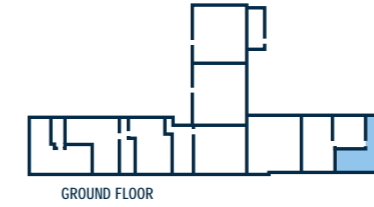
FLOOR PLANS  
CONSTABLE HOUSE



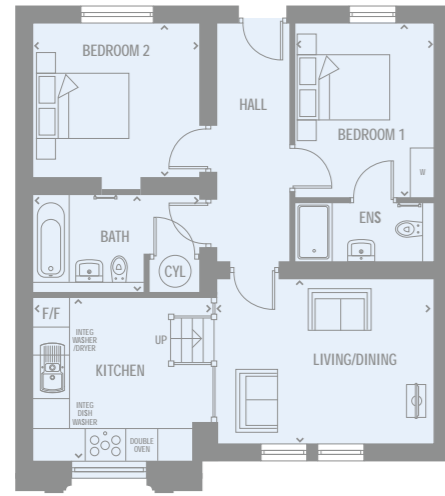
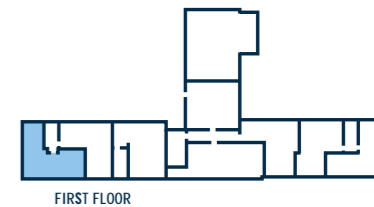
FLOOR PLANS  
CONSTABLE HOUSE



FLOOR PLANS  
CONSTABLE HOUSE



FLOOR PLANS  
CONSTABLE HOUSE

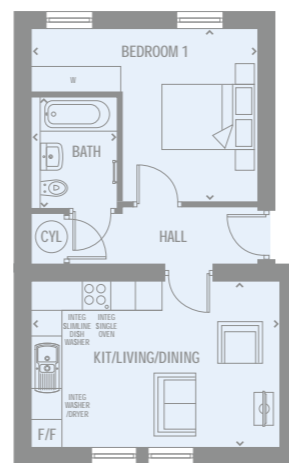


APARTMENT 18 67.3 SQ M  
TWO BED 725 SQ FT

GROUND FLOOR	METRIC (M)	IMPERIAL
Kitchen	3630mm x 3200mm	11'10" x 10'6"
Living/Dining	4400mm x 3225mm	13'1" x 10'7"
Bedroom 1	2805mm x 3435mm	9'2" x 11'3"
Ensuite	2805mm x 1215mm	9'2" x 3'11"
Bedroom 2	3275mm x 3000mm	10'8" x 9'10"
Bathroom	3345mm x 1985mm	10'11" x 6'6"

KEY <> MEASUREMENT POINTS | W WARDROBE | CYL CYLINDER CUPBOARD | CPD CUPBOARD

Customers should note the computer generated images shown is an illustration of the Victoria House house type. External finishes, landscaping and configuration may vary from plot to plot. Materials used may also differ from plot to plot including render and roof tile colours. Dimensions stated are within 50mm (2") but should not be used as a basis for furnishings, furniture or appliance spaces etc. Dimensions for such purposes must be verified against actual site measurements. Please note the handing of plots, door and window positions may vary from the floor plans shown. Please check individual plot details with our sales team.



APARTMENT 19 39.5 SQ M  
ONE BED 426 SQ FT

GROUND FLOOR	METRIC (M)	IMPERIAL
Kit/Live/Din	5065mm x 3225mm	16'7" x 10'7"
Bedroom 1	4585mm x 3395mm	15'0" x 11'1"
Bathroom	1500mm x 2270mm	4'11" x 7'5"

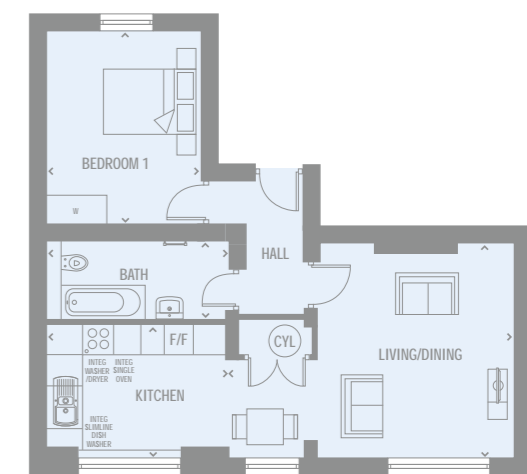


APARTMENT 20 40.4 SQ M  
ONE BED 435 SQ FT

GROUND FLOOR	METRIC (M)	IMPERIAL
Kitchen	2450mm x 3065mm	8'0" x 10'0"
Living/Dining	4525mm x 3235mm	16'1" x 10'7"
Bedroom 1	3120mm x 3400mm	10'2" x 11'1"
Bathroom	1900mm x 2020mm	6'2" x 6'7"

KEY <> MEASUREMENT POINTS | W WARDROBE | CYL CYLINDER CUPBOARD | CPD CUPBOARD

Whilst these floor plans have been prepared with all due care for the convenience of the intending purchaser, the information contained herein is a preliminary guide only. CGI's are also indicative, external finishes and features may vary.

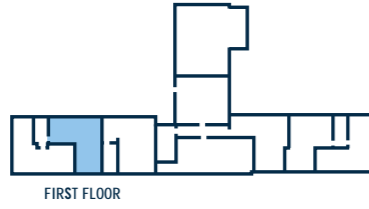


APARTMENT 21 52.8 SQ M  
ONE BED 569 SQ FT

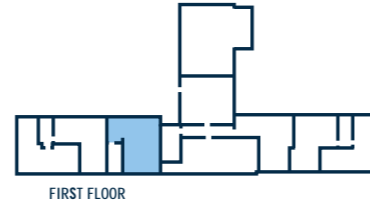
FIRST FLOOR	METRIC (M)	IMPERIAL
Kitchen	3425mm x 2500mm	11'2" x 8'2"
Living/Dining	5770mm x 4185mm	18'11" x 13'8"
Bedroom 1	2960mm x 3875mm	9'8" x 12'8"
Bathroom	3555mm x 1585mm	11'8" x 5'2"

KEY <> MEASUREMENT POINTS | W WARDROBE | CYL CYLINDER CUPBOARD | CPD CUPBOARD

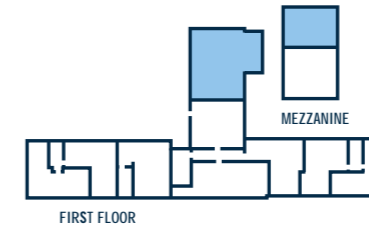
FLOOR PLANS  
CONSTABLE HOUSE



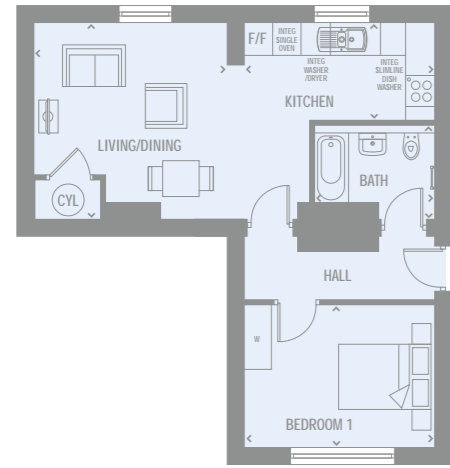
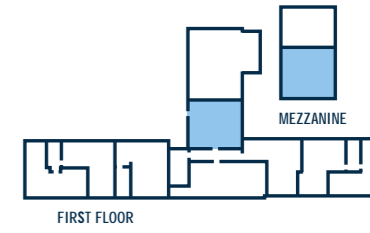
FLOOR PLANS  
CONSTABLE HOUSE



FLOOR PLANS  
CONSTABLE HOUSE

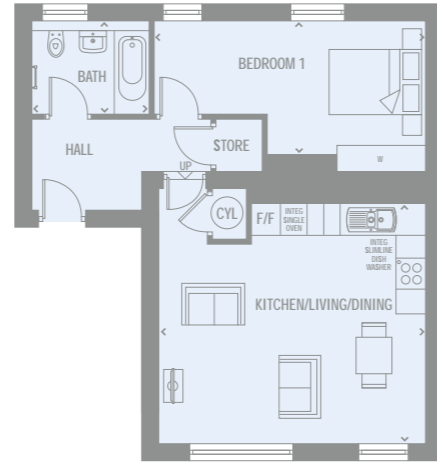


FLOOR PLANS  
CONSTABLE HOUSE



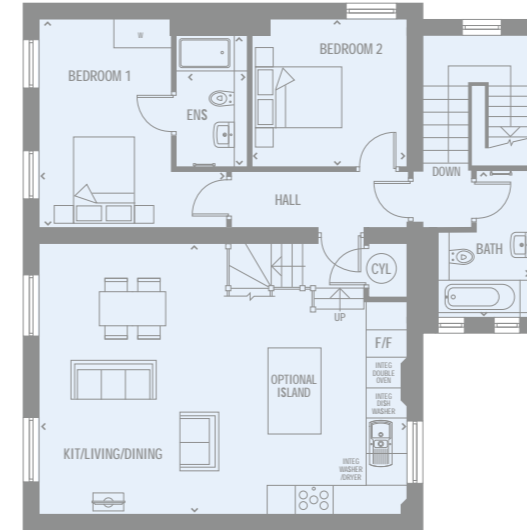
APARTMENT 22 48.4 SQ M  
ONE BED 522 SQ FT

FIRST FLOOR	METRIC (M)	IMPERIAL
Kitchen	1785mm x 3930mm	5'10" x 12'10"
Living/Dining	5550mm x 3855mm	18'2" x 12'7"
Bedroom 1	3935mm x 2735mm	12'10" x 8'11"
Bathroom	1970mm x 2500mm	6'5" x 8'2"



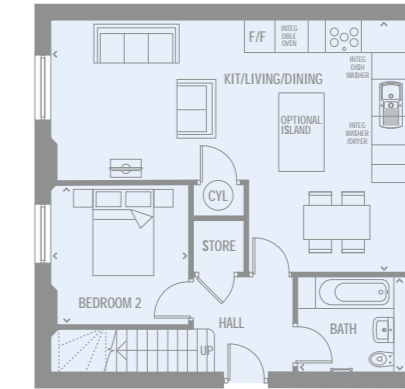
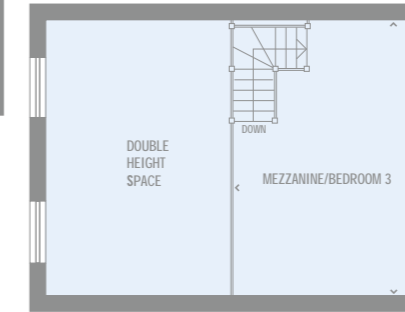
APARTMENT 23 54.3 SQ M  
ONE BED 585 SQ FT

FIRST FLOOR	METRIC (M)	IMPERIAL
Kit/Live/Din	5445mm x 5110mm	17'10" x 16'9"
Bedroom 1	5440mm x 2940mm	17'10" x 9'7"
Bathroom	2360mm x 1765mm	7'8" x 5'9"



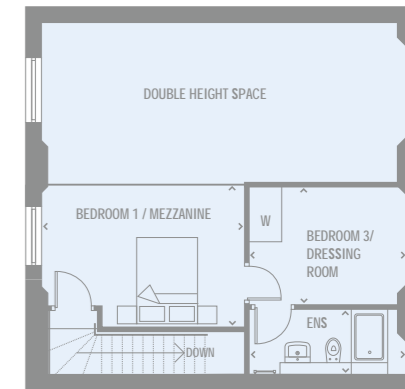
MEZZANINE APT 119.6 SQ M  
TWO/THREE BED 1288 SQ FT

FIRST FLOOR	METRIC (M)	IMPERIAL
Kit/Live/Din	7765mm x 5915mm	25'5" x 19'4"
Bedroom 1	2900mm x 4340mm	9'6" x 14'2"
Ensuite	1400mm x 2845mm	4'7" x 9'4"
Bedroom 2	3360mm x 3065mm	11'0" x 10'0"
Bathroom	1975mm x 3095mm	6'5" x 10'1"
Study	3755mm x 5915mm	12'3" x 19'4"



MEZZANINE APT 84.7 SQ M  
TWO/THREE BED 912 SQ FT

FIRST FLOOR	METRIC (M)	IMPERIAL
Kit/Live/Din	7750mm x 5435mm	25'5" x 11'3"
Bedroom 1	4310mm x 3065mm	14'1" x 10'0"
Ensuite	3035mm x 1400mm	9'11" x 4'7"
Bedroom 2	2970mm x 3030mm	9'8" x 9'11"
Bathroom	3000mm x 2125mm	9'11" x 6'11"
Bedroom 3	3235mm x 2625mm	10'7" x 8'7"



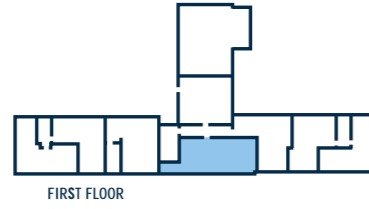
KEY <> MEASUREMENT POINTS | W WARDROBE | CYL CYLINDER CUPBOARD | CPD CUPBOARD

Whilst these floor plans have been prepared with all due care for the convenience of the intending purchaser, the information contained herein is a preliminary guide only. CGI's are also indicative, external finishes and features may vary.

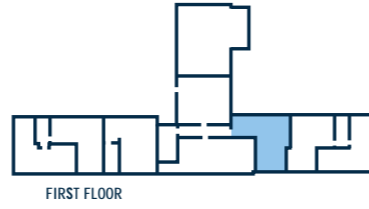
KEY <> MEASUREMENT POINTS | W WARDROBE | CYL CYLINDER CUPBOARD | CPD CUPBOARD

Customers should note the computer generated images shown is an illustration of the Victoria House house type. External finishes, landscaping and configuration may vary from plot to plot. Materials used may also differ from plot to plot including render and roof tile colours. Dimensions stated are within 50mm (2") but should not be used as a basis for furnishings, furniture or appliance spaces etc. Dimensions for such purposes must be verified against actual site measurements. Please note the handing of plots, door and window positions may vary from the floor plans shown. Please check individual plot details with our sales team.

FLOOR PLANS  
CONSTABLE HOUSE



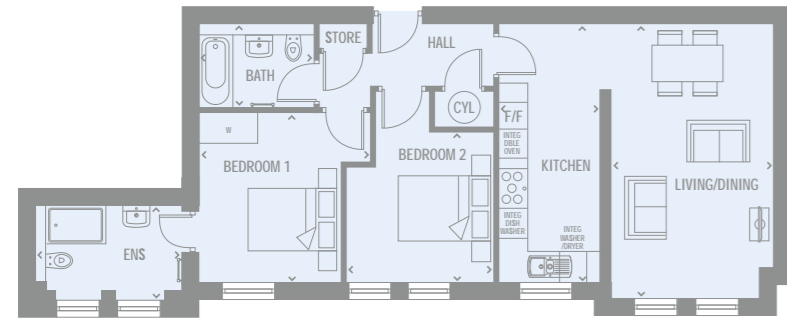
FLOOR PLANS  
CONSTABLE HOUSE



FLOOR PLANS  
CONSTABLE HOUSE



FLOOR PLANS  
CONSTABLE HOUSE



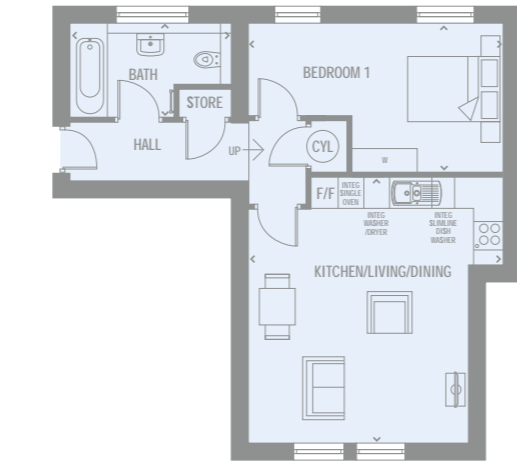
APARTMENT 26  
TWO BED

66.8 SQ M  
720 SQ FT

FIRST FLOOR	METRIC (M)	IMPERIAL
Kitchen	2040mm x 4050mm	6'8" x 13'11"
Living/Dining	3380mm x 5390mm	10'11" x 17'8"
Bedroom 1	3525mm x 3305mm	11'6" x 10'10"
Ensuite	2910mm x 1705mm	9'6" x 5'7"
Bedroom 2	2990mm x 3735mm	9'9" x 12'3"
Bathroom	2375mm x 1760mm	7'9" x 5'9"

KEY <> MEASUREMENT POINTS | W WARDROBE | CYL CYLINDER CUPBOARD | CPD CUPBOARD

Customers should note the computer generated images shown is an illustration of the Victoria House house type. External finishes, landscaping and configuration may vary from plot to plot. Materials used may also differ from plot to plot including render and roof tile colours. Dimensions stated are within 50mm (2") but should not be used as a basis for furnishings, furniture or appliance spaces etc. Dimensions for such purposes must be verified against actual site measurements. Please note the handing of plots, door and window positions may vary from the floor plans shown. Please check individual plot details with our sales team.



APARTMENT 27  
ONE BED

50.9 SQ M  
548 SQ FT

FIRST FLOOR	METRIC (M)	IMPERIAL
Kit/Live/Din	5155mm x 5260mm	16'11" x 17'3"
Bedroom 1	5135mm x 2900mm	16'10" x 9'6"
Bathroom	3235mm x 1800mm	10'7" x 5'10"

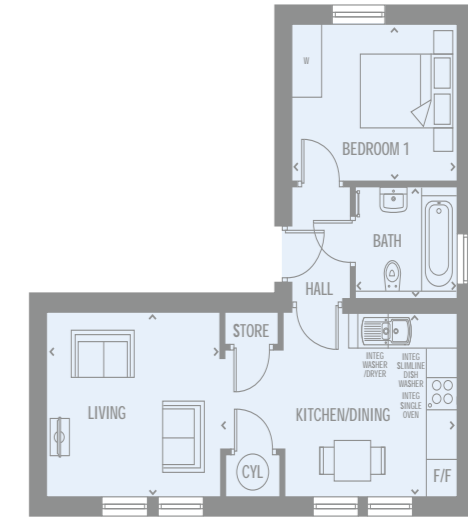
APARTMENT 28  
ONE BED

45.8 SQ M  
494 SQ FT

FIRST FLOOR	METRIC (M)	IMPERIAL
Kit/Live/Din	6530mm x 3530mm	21'5" x 11'7"
Bedroom 1	4460mm x 3240mm	14'7" x 10'7"
Bathroom	2255mm x 1685mm	7'4" x 5'6"

KEY MEASUREMENT POINTS | W WARDROBE | CYL CYLINDER CUPBOARD | CPD CUPBOARD

Customers should note the computer generated images shown is an illustration of the Victoria House house type. External finishes, landscaping and configuration may vary from plot to plot. Materials used may also differ from plot to plot including render and roof tile colours. Dimensions stated are within 50mm (2") but should not be used as a basis for furnishings, furniture or appliance spaces etc. Dimensions for such purposes must be verified against actual site measurements. Please note the handing of plots, door and window positions may vary from the floor plans shown. Please check individual plot details with our sales team.



APARTMENT 29  
ONE BED

43.8 SQ M  
472 SQ FT

FIRST FLOOR	METRIC (M)	IMPERIAL
Kitchen/Dining	4550mm x 3240mm	14'11" x 10'7"
Living	3815mm x 3240mm	12'6" x 10'7"
Bedroom 1	3285mm x 2630mm	10'9" x 8'7"
Bathroom	1900mm x 2035mm	6'2" x 6'8"



# COURT HOUSE

APARTMENTS 30-31

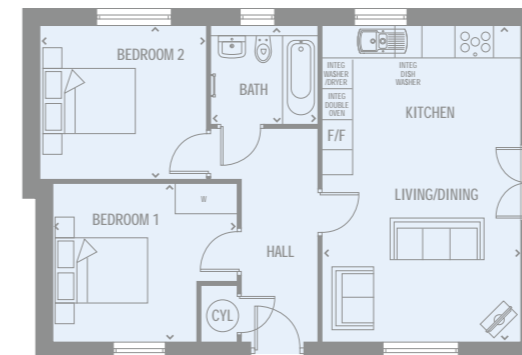
IT'D BE A CRIME NOT TO FIND OUT MORE  
STATION HOUSE  
CALL 0121 5145 999



## FLOOR PLANS COURT HOUSE

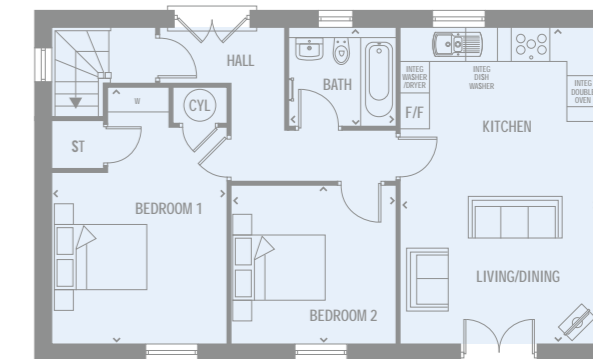


## FLOOR PLANS COURT HOUSE



**APARTMENT 30** 56.6 SQ M  
**TWO BED** 610 SQ FT

GROUND FLOOR	METRIC (M)	IMPERIAL
Kit/Live/Din	3885mm x 6145mm	12'9" x 20'1"
Bedroom 1	3575mm x 2825mm	11'8" x 9'3"
Bedroom 2	3240mm x 3050mm	10'7" x 10'0"
Bathroom	2105mm x 1940mm	6'10" x 6'4"



**APARTMENT 31** 72.8 SQ M  
**TWO BED** 784 SQ FT

FIRST FLOOR	METRIC (M)	IMPERIAL
Kit/Live/Din	3885mm x 6145mm	12'9" x 20'1"
Bedroom 1	3360mm x 5000mm	11'0" x 16'4"
Bedroom 2	3250mm x 3100mm	10'8" x 10'2"
Bathroom	2105mm x 1940mm	6'10" x 6'4"

KEY <> MEASUREMENT POINTS | W WARDROBE | CYL CYLINDER CUPBOARD | CPD CUPBOARD

Customers should note the computer generated images shown is an illustration of the Victoria House house type. External finishes, landscaping and configuration may vary from plot to plot. Materials used may also differ from plot to plot including render and roof tile colours. Dimensions stated are within 50mm (2") but should not be used as a basis for furnishings, furniture or appliance spaces etc. Dimensions for such purposes must be verified against actual site measurements. Please note the handing of plots, door and window positions may vary from the floor plans shown. Please check individual plot details with our sales team.



# EASY TO BUY GUILTY AS CHARGED

Buying a new Lovell home couldn't be easier. Follow our step-by-step purchasing guide and you'll be home in no time!



### Register

Register your interest with Lovell and we will put you in touch with our Independent Financial Advisor for free advice. You can seek your own advice but you will also need to be qualified by Lovell.



### Choose and reserve

Secure your new home with a reservation fee which goes towards the total purchase price. It's then reserved in your name while the legal processes are completed.



### Keeping things moving

Following reservation, we will send on the contract documents to your solicitor. Arrange your mortgage if you need one. You can do this yourself or we can put you in touch with an Independent Financial Advisor to help.



### Exchanging contracts

Once you've had your formal mortgage offer, your solicitor will inform you when it's time to exchange contracts. You will now pay your deposit, which will be sent to us with your signed contract.



### Nearly there

Under the terms of the contract we need to allow time for financial completion. Once this has happened, we will ask your solicitor to request funds and pay the balance of the purchase price. The deeds are transferred into your name and you now own your new Lovell home!



### Moving in

We will arrange for your meters to be read on the day of legal completion. Our Sales Executive will hand you the keys and a handover certificate.

The direction your new home faces, its exterior details and construction materials may differ from what you see in this brochure. Individual features such as kitchen and bathroom layouts, doors and windows may vary. The illustrations used throughout are indicative and may be subject to change. For detailed information on individual plots, ask our sales staff. The dimensions in the brochure are within 50mm (2") but shouldn't be used as an accurate basis for furnishings, furniture or appliance spaces. You will need to take actual measurements. Specification details are subject to change without prior notice. Should a replacement be required, this will be to an equal or higher standard. Consequently these particulars represent a general guide only and cannot be relied upon as accurately describing and of the Specified Matters prescribed by any order made under Consumer Protection from Unfair Trading Regulations 2008 (CPRs). Saints Quarter is a marketing name and may not form part of the final postal address. This brochure is a purchasing guide and does not form a contract, part of a contract or a warranty. Details are correct at time of going to print.



# A POLICE STATION REINSPIRED

At Lovell Reinspired, we are dedicated to taking historic properties of distinction and lovingly bringing them back to life. This commitment to the past means renovating and restoring buildings sympathetically to their former glory while embracing the best in contemporary living.

As part of Lovell, we can bring to bear over 40 years of experience in creating unique developments. This allows us to combine traditional skills and crafts with modern building techniques and designs. The result is the best of old and new in harmony for superior homes that come with Lovell's 2 year guarantee period for all work, via a dedicated customer care team, and a 10 year warranty provided by the NHBC.

**LOVELL**  
*Reinspired*





# HOW TO FIND US...



STATION HOUSE SALES & MARKETING SUITE NEW STREET, STOURBRIDGE DY8 1PF

### FROM THE NORTH

From the M1 take the A42 exit towards Birmingham, continue on the A42 and keep right to continue to the M42, follow the signs for tamworth/birmingham. At the interchange at Water Orton Interchange, keep left and follow signs for M6 (N) toward Birmingham (Central, E, N & W) Then merge onto the M6. Then at junction 8, take the M5 exit to Birmingham (W & S)/West Bromwich and keep left and merge onto M5. At junction 3, take the A456 exit to Kidderminster. At the roundabout, take the 3rd exit onto Manor Way/A456. At the roundabout, take the 2nd exit and stay on Manor Way/A456. At the roundabout, take the 1st exit onto Hagley Rd/A456 and continue to follow A456 and then at the roundabout, take the 2nd exit onto Hagley Causeway/A456. At the roundabout, take the 2nd exit onto Hagley Hill/A456 and continue to follow A456. Turn right onto Stourbridge Rd/A491 Continue to follow A491. At the roundabout, take the 2nd exit onto Hagley Rd/A491 and continue to follow A491. Turn left onto Enville St/A458 and continue to follow A458 At the roundabout, take the 3rd exit onto High St/A461 and then turn right onto New Road, Station house is on your right.

### FROM THE SOUTH

Take the M5(N) exit toward B'ham (W,N&Cent)/Stourbridge/M6 and merge onto M5. At junction 4, take the A38/A491 exit to B'ham (SW)/Stourbridge. At the roundabout, take the 1st exit onto Sandy Ln/A491. At the roundabout, take the 2nd exit onto Stourbridge Rd/A491. At the roundabout, take the 4th exit onto Kidderminster Rd/A456/A491 and turn left onto Stourbridge Rd/A491 and then continue to follow A491. At the roundabout, take the 2nd exit onto Hagley Rd/A491 and continue to follow A491. Then turn left onto Enville St/A458 and continue to follow A458 At the roundabout, take the 3rd exit onto High St/A461 and then turn right onto New Road, Station house is on your right.



CALL 0121 5145 999 OR  
EMAIL [STATIONHOUSE@LOVELL.CO.UK](mailto:STATIONHOUSE@LOVELL.CO.UK)  
FOR FURTHER QUESTIONING!

STATION HOUSE  
SALES & MARKETING SUITE  
NEW STREET  
STOURBRIDGE  
DY8 1PF



VISIT US [LOVELL.CO.UK](http://LOVELL.CO.UK)



This brochure has been produced as a guide to assist intending purchasers in the selection of their new home. Its content does not form part of any contract. The house designs illustrated depict their overall style, though elevational treatments may vary between plots in orientation, architectural detail and in the construction materials used. These variations are designed to promote individuality and in turn create a quality living environment. Our sales staff will be pleased to advise on the treatment specified for each individual plot. The dimensions stated are within 50mm (2") but should not be used as a basis for furnishings, furniture or appliance spaces etc. Dimensions for such purposes must be verified against actual site measurements. Produced@www.onfire.agency December 2019

LOVELL  
*Reinspired*