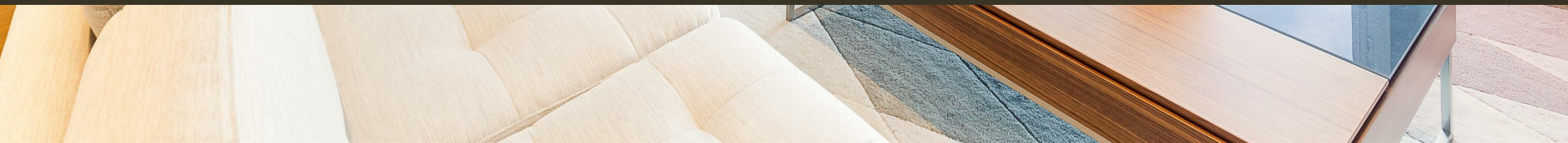




Vista Chelsea Bridge,
London, SW11 8BW
£775 Per Week

GARTON JONES.COM



Sophora House,
Vista Chelsea Bridge,
London, SW11 8BW

£775 Per Week



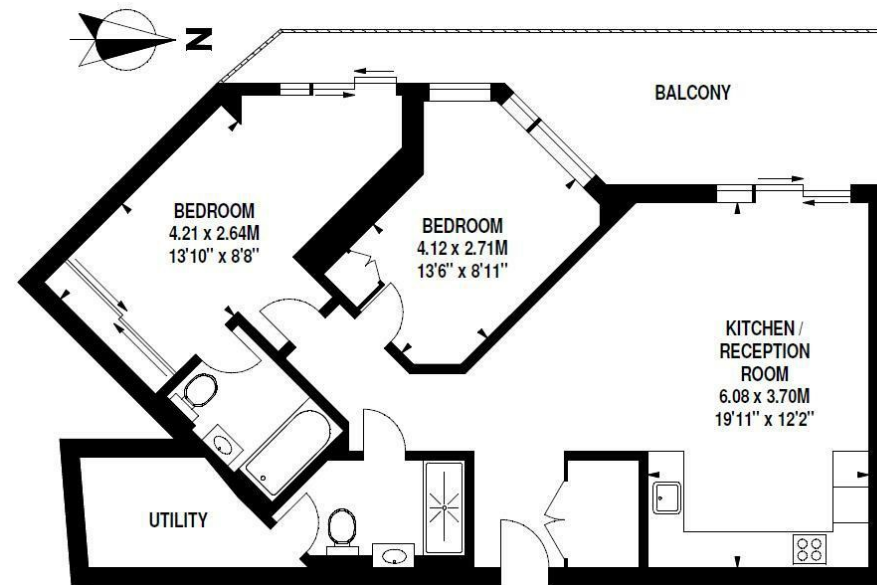
Stylish two bedroom apartment located on the twelfth floor in the Vista Sophora Building at Chelsea Bridge Wharf. Spacious open plan kitchen with beautiful stone work surface finishes and a beautifully designed lounge area. Master bedroom with en-suite bathroom. Second bedroom and separate bathroom. Large windows and large balcony with views of the iconic Battersea Park.

Fully equipped residents gym and 24-hour concierge. Located between the wide open spaces of Battersea Park and the exciting redevelopment of Battersea Power Station. The breath taking design of the building is matched by the luxury finishes internally and fabulous views.

- Luxury Two Bedroom, Two Bathroom
- Views Overlooking Battersea Park
- Large Balcony
- Open plan Kitchen/Reception
- 840 sq ft
- Twelfth floor
- 24 hour Concierge
- Gym, Sauna and Swimming Pool Access

Sophora House, SW11

Approximate Gross Internal Area 78 sq m / 840 sq ft



Twelfth Floor

Floor Plan produced for Garton Jones by Mays Floorplans © . Tel 020 3397 4594
Illustration for identification purposes only, not to scale
All measurements are maximum, and include wardrobes and window bays where applicable