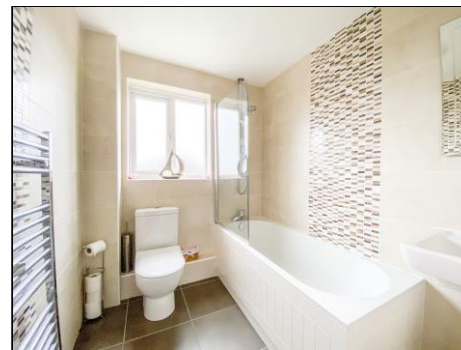




Battalion Drive
Wootton, Northampton

oriordanbond



Battalion Drive

Wootton

Northampton NN4 6RX

PRICE £375,000

A modern four bedroom detached family home, located in the sought after area of Wootton, in this popular cul-de-sac. The property is situated within the school catchment for Wootton Primary School.

The well maintained accommodation comprises entrance hall, cloakroom/WC, sitting room with patio doors leading to the rear garden, dining room, fitted kitchen, utility room, first floor landing, master bedroom with en-suite shower room, three further bedrooms and a family bathroom. Outside is lawn frontage with double width driveway providing off road parking leading to an integral garage. To the rear is an enclosed garden with lawn area and block paved patio area. Further benefits include uPVC double glazing and gas radiator heating. (B/1097/M)

Additional Information

- Northampton Town Centre: 3.5 Miles
- Northampton Train Station: 3.3 Miles
- Council Tax Band: D
- Energy Efficiency Rating: C (70 / 82)

Viewing

Viewing strictly by appointment – details below

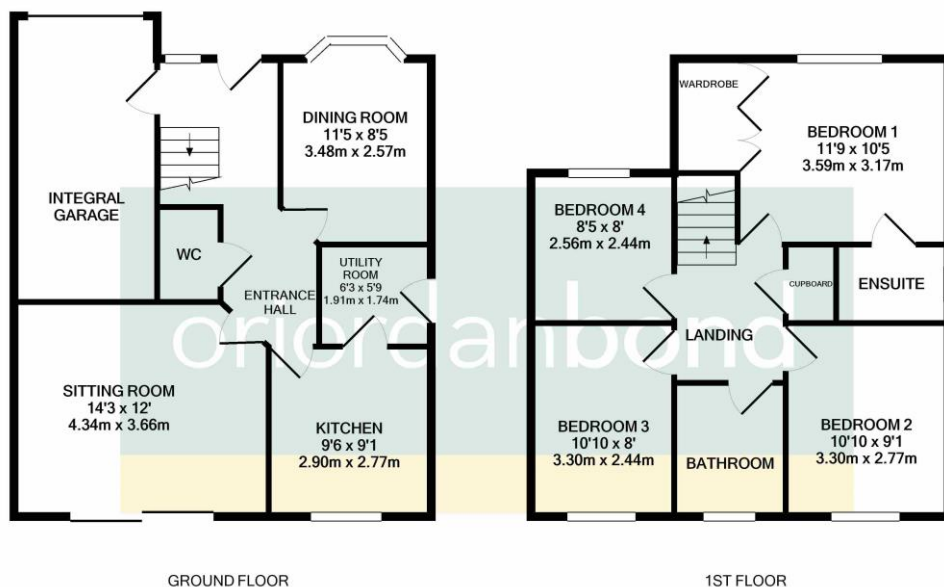
Disclaimer

O'Riordan Bond Estate Agents Limited has not tested apparatus, equipment, fittings or services and so cannot verify they are in working order. The buyer is advised to obtain verification from their solicitor or surveyor.

O'Riordan Bond Grange Park

01604 432007

northamptongp@oriordanbond.co.uk



TOTAL APPROX. FLOOR AREA 1097 SQ.FT. (101.9 SQ.M.)

Whilst every attempt has been made to ensure the accuracy of the floor plan contained here, measurements of doors, windows, rooms and any other items are approximate and no responsibility is taken for any error, omission, or mis-statement. This plan is for illustrative purposes only and should be used as such by any prospective purchaser. The services, systems and appliances shown have not been tested and no guarantee as to their operability or efficiency can be given

Made with Metropix ©2020