



PORTSEA HALL PORTSEA PLACE,  
LONDON, W2  
£2,950 Per Month

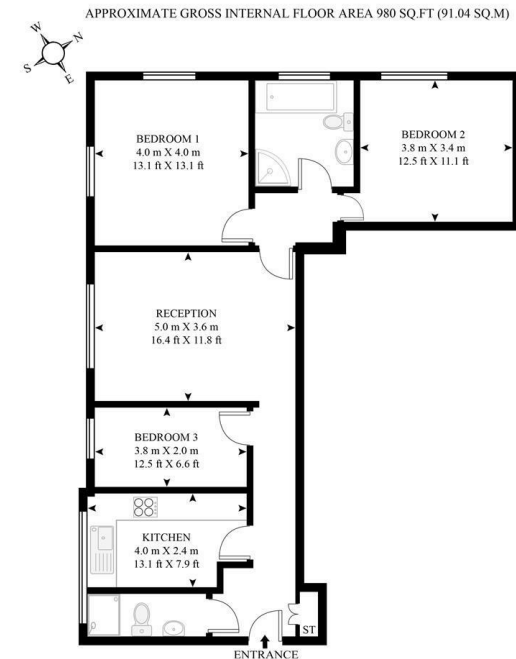
T. +44 (0) 20 7935 0011  
E. [enquire@napierwatt.co.uk](mailto:enquire@napierwatt.co.uk)  
[WWW.NAPIERWATT.CO.UK](http://WWW.NAPIERWATT.CO.UK)

**NAPIER WATT**  
PROPERTY CONSULTANTS

## Description

A bright and well presented three bedroom, two bathroom, fifth floor apartment situated in an beautiful Art-Deco portered block just off Connaught Square. Minutes Away from Marble Arch and Hyde Park, this apartment is in close proximity to the excellent shops & restaurants in Connaught Village and easy access to the West End.

: Entrance Hall : Reception Room : Kitchen : 3 Bedrooms : 2 Bathrooms : Porter : Lifts



## TERMS

Fees & Charges: Tenancies exceeding £100,000 Per annum £480 inc VAT, Tenancies where a company is a tenant £480 inc VAT.

**For Clarification** we wish to inform prospective purchasers that we have prepared these sales particulars as a general guide. We have not carried out a survey, nor tested the services, appliances and specific fittings. Room sizes are approximate and rounded: they are taken between internal wall surfaces and therefore include cupboards/shelves, etc. Accordingly, they should not be relied upon for carpets and furnishings. Formal notice is given that all fixtures and fittings, carpeting, curtains/blinds and kitchen equipment, whether fitted or not, are deemed to be removable by the vendor unless specifically itemised within these sales particulars.

T. +44 (0) 20 7935 0011  
 E. [enquire@napierwatt.co.uk](mailto:enquire@napierwatt.co.uk)  
[WWW.NAPIERWATT.CO.UK](http://WWW.NAPIERWATT.CO.UK)

**NAPIER WATT**  
 PROPERTY CONSULTANTS