

Apartment	sq.ft	sq.m
Apartment Area	440	40.85
Living/Kitchen	21'6 x 12'2	6.55 x 3.71
Master Bedroom	11'12 x 9'2	3.65 x 2.80
Juliette Balcony	—	—



Park Drive, London, E14 9ZW £1,850 Per Month

Ashton Estate Agents are pleased to offer this new four floor apartment located within the 10 Park Drive development.

The apartment is set over approximately 42.65 sq m (approximately 459 sq ft) and offers open plan reception room and kitchen, large double bedroom and en-suite bathroom & WC and is offered on a furnished basis designed by John Lewis Home design.

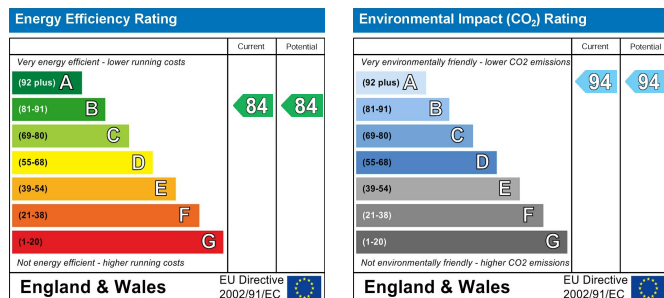
The development is the first private development located within the Canary Wharf district and offers 24 hour concierge/security and access to Third Space gymnasium, residents cinema room, river side views and residents roof terrace

10 Park Drive is located within the new Wood Wharf development situated in Canary Wharf, London E14. Close to transport links including Canary Wharf DLR station (0.3 miles) and Jubilee line underground station (0.2 miles). All times and distances are approximate.

- One Bed Apartment
- Spacious Double Bedroom
- Modern Shower Room
- John Lewis Design Furnishing
- 4th Floor
- Newly Built
- Open Plan Reception/Kitchen
- Next to Canary Wharf station
- 24 Concierge
- Available Now



Scan here
for a direct
link to our
website



AGENTS NOTE: 'We routinely refer buyers and sellers to solicitors and conveyancers. It is your decision whether you choose to deal with them. Should you decide to use them you should know that we would receive a referral fee of between £120 and £200 including VAT from them for recommending you to them.'

The mention of any appliances and/or services within these Sales Particulars does not imply that they are in full and efficient working order. All measurements have been taken using a sonic tape measure or laser distance meter and therefore may be subject to a small margin of error. Whilst we endeavour to make our Sales Particulars accurate and reliable, if there is any point which is of particular importance to you, please contact us and we will be pleased to check the information. Do so particularly if contemplating travelling some distance.

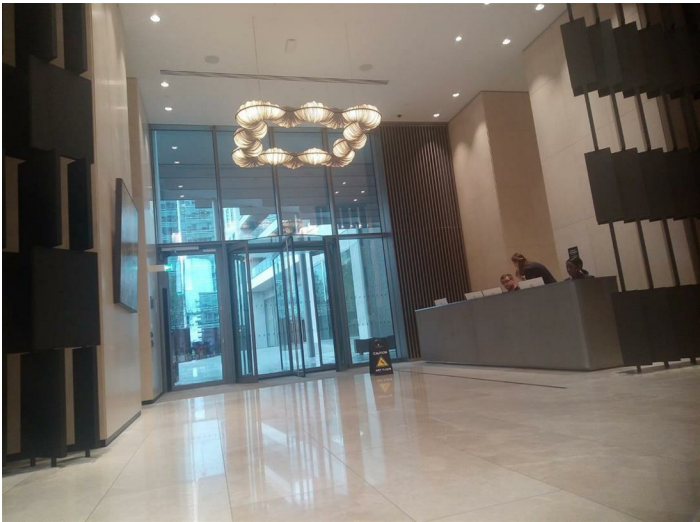
front



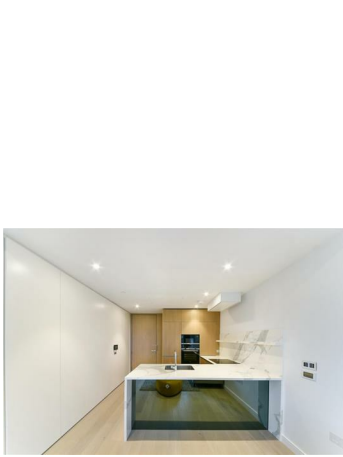
en-suite bathroom



conceirge



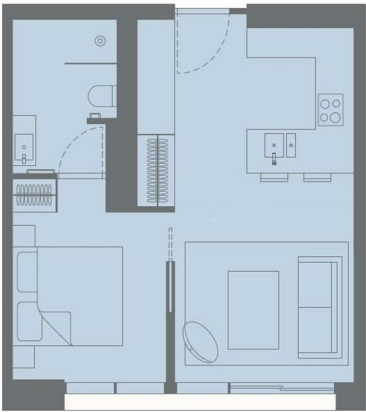
reception



kitchen appliance



floor



bedroom



Apartment	sq. ft	sq. m
Apartment Area	440	40.85
Living/Kitchen	21'6 x 12'2	6.55 x 3.71
Master Bedroom	11'12 x 9'2	3.65 x 2.80
Juliette Balcony	—	—

