



First
Month's Rent
Half Price!*

*Fees must be paid by
31st January 2021

Harebell Gardens, Dunstable

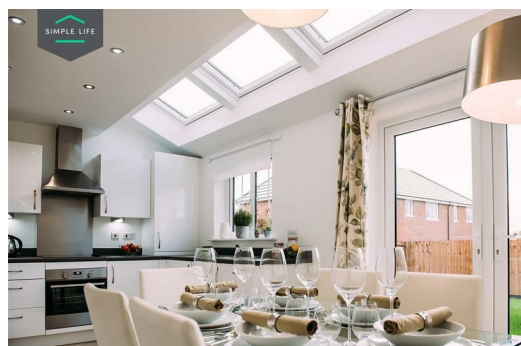
£1,390 PCM

Receive your first month's rent half price

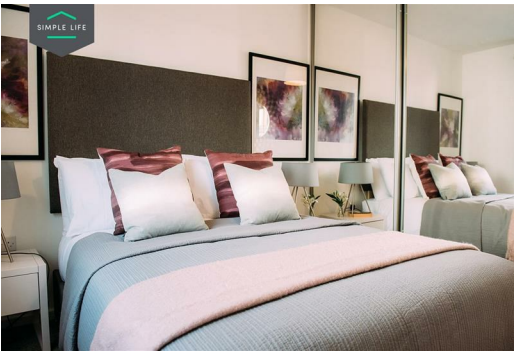
Leagrave train station is less than 5 miles away providing quick access to Bedford, Brighton, Luton, St Albans and Gatwick, whereas the M1 and the A5-M1 Link are close by to take you beyond to Milton Keynes and London. Both centres of Houghton Regis and Dunstable are within easy reach of the site offering many local shops and supermarkets as well as the nearby White Lion Retail Park which includes a Next and an M&S Simply food among many other high street names.

The Ellesmere is a stunning home built with your needs in mind. Downstairs, there is a generous living room, hallway and WC. The rear of the property has a magnificent living/kitchen area with a range of contemporary fitted units with integrated appliances. The room has French windows opening onto and overlooking the rear garden as well as a series of skylights which flood the room with light – an ideal space for both family time and entertaining. Upstairs there is a spacious family bathroom complete with a bath and shower, a master bedroom with fitted, mirrored wardrobes and two further well-proportioned bedrooms. At the top of the stairs you will also find a handy store cupboard.

For those of you looking to get out into nature you'll find Houghton Hall Park ideal for dog walkers, jogging and family outings. The Barton Hills National Nature Reserve is close to the site to the north east, with ZSL Whipsnade Zoo a 15minute drive away. And with Luton and London nearby, the opportunities for nightlife are boundless!



22 Harebell Gardens, Houghton Regis, Dunstable, Bedfordshire, LU5 6JQ



Energy Efficiency Rating		Environmental Impact (CO ₂) Rating	
Current	Potential	Current	Potential
100-149 kWh/m ² (A)	100-149 kWh/m ² (A)	100-149 kg CO ₂ /m ² (A)	100-149 kg CO ₂ /m ² (A)
150-199 kWh/m ² (B)	150-199 kWh/m ² (B)	150-199 kg CO ₂ /m ² (B)	150-199 kg CO ₂ /m ² (B)
200-249 kWh/m ² (C)	200-249 kWh/m ² (C)	200-249 kg CO ₂ /m ² (C)	200-249 kg CO ₂ /m ² (C)
250-299 kWh/m ² (D)	250-299 kWh/m ² (D)	250-299 kg CO ₂ /m ² (D)	250-299 kg CO ₂ /m ² (D)
300-349 kWh/m ² (E)	300-349 kWh/m ² (E)	300-349 kg CO ₂ /m ² (E)	300-349 kg CO ₂ /m ² (E)
350-399 kWh/m ² (F)	350-399 kWh/m ² (F)	350-399 kg CO ₂ /m ² (F)	350-399 kg CO ₂ /m ² (F)
400-449 kWh/m ² (G)	400-449 kWh/m ² (G)	400-449 kg CO ₂ /m ² (G)	400-449 kg CO ₂ /m ² (G)