




www.kings-group.net


248 Hoe Street
Walthamstow E17 3AX
Tel: 020 8521 1122

Orford Road, London, E17 9QX
£1,300 Per Month

Kings Group are proud to present this stunning two bedroom, ground floor, shared garden flat based in the borders of the Walthamstow Village area, with it's popular cafes and shops just a minutes walk away. Also just moments away is Walthamstow Central station, which makes the property very convenient for commuters! Bright and airy throughout, this property boasts a separate lounge area, two well sized double bedrooms, a modern kitchen and three piece bathroom - all in fantastic condition throughout. It can also boast of the shared rear garden, allowing outside space for you to relax in warmer weather. Call now to view!

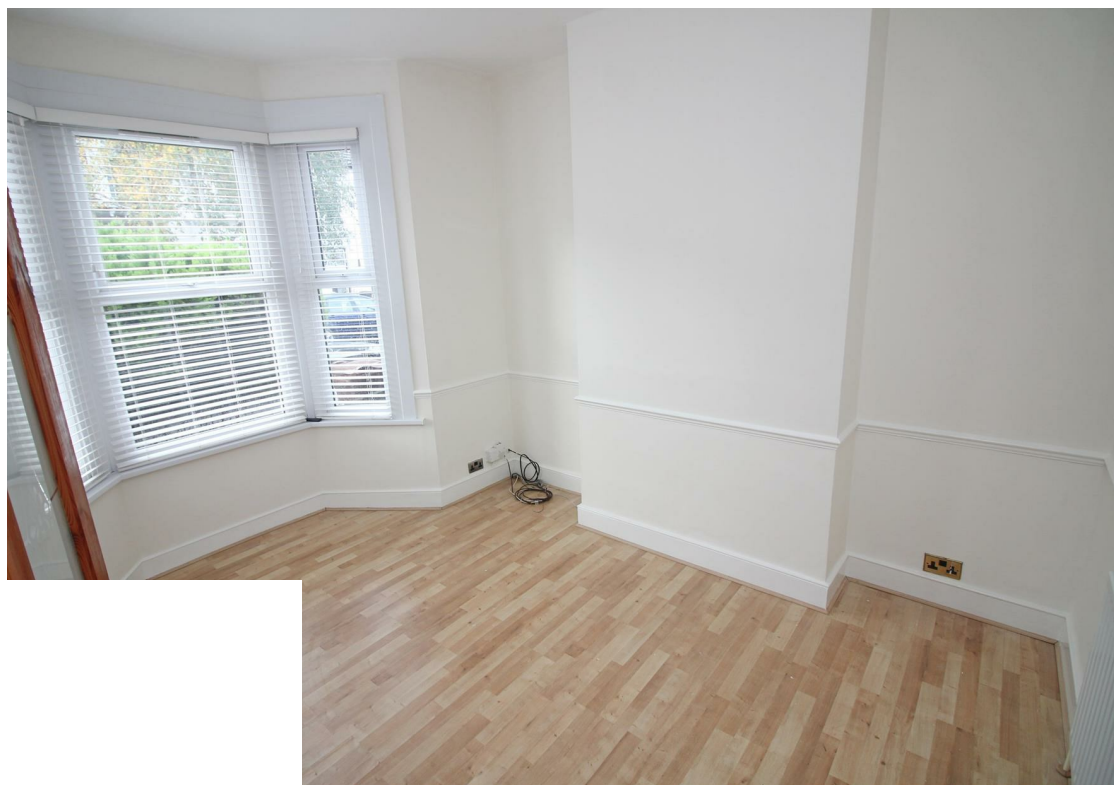


Energy Efficiency Rating		
	Current	Potential
<i>Vary energy efficient - lower running costs</i>		
(92 plus) A		
(81-91) B		
(69-80) C		
(55-68) D		
(39-54) E		
(21-38) F		
(1-20) G		
<i>Not energy efficient - higher running costs</i>		
England & Wales	EU Directive 2002/91/EC	

Environmental Impact (CO ₂) Rating		
	Current	Potential
<i>Vary environmentally friendly - lower CO₂ emissions</i>		
(92 plus) A		
(81-91) B		
(69-80) C		
(55-68) D		
(39-54) E		
(21-38) F		
(1-20) G		
<i>Not environmentally friendly - higher CO₂ emissions</i>		
England & Wales	EU Directive 2002/91/EC	

67

77





Associated Offices in London, Essex and Hertfordshire
Kings Head Office Tudor Lodge, Burton Lane, Goffs Oak, Hertfordshire EN7 6SY Tel: 01707-872000

