

**Pump House  
Crescent  
Brentford  
TW8 0FZ**

Offers In The Region Of  
£1,000,000

**Chase**Buchanan





## Hyperion Tower

Approximate Gross Internal Area = 95.9 sq m / 1032 sq ft

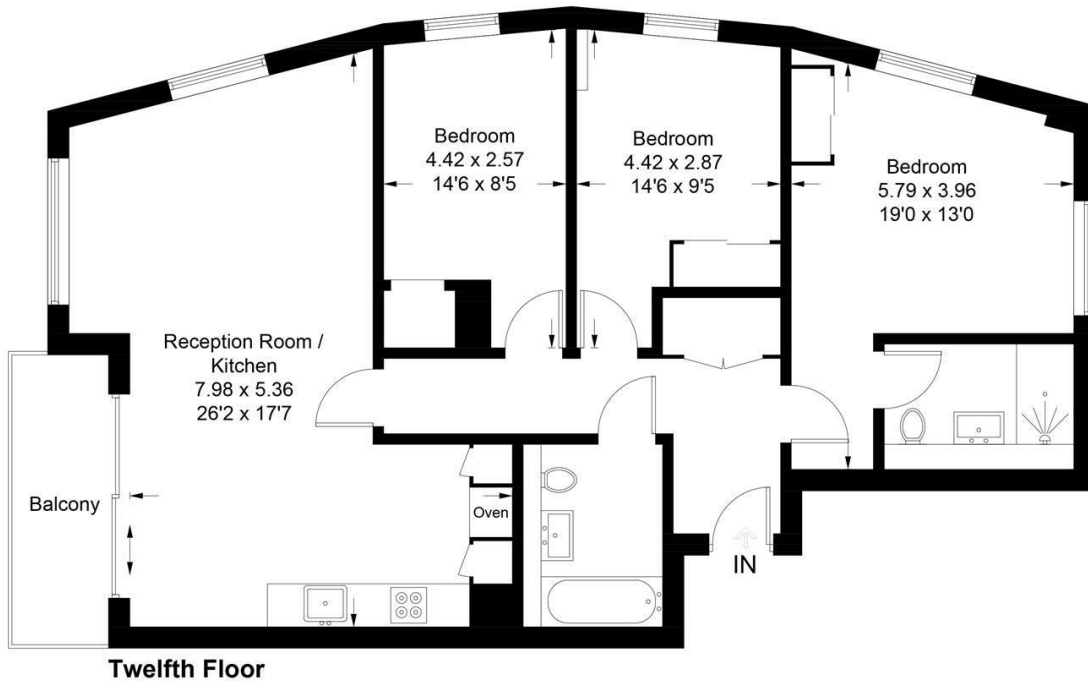


Illustration for identification purposes only, measurements are approximate, not to scale. floorplansUsketch.com © (ID705709)

- Viewings accompanied by Chase Buchanan
- Three bedrooms
- Balcony with far reaching views
- Exclusive gated development
- Lifts to all floors
- Stylish 12th floor apartment
- Two bathrooms
- Concierge
- Two parking spaces underground
- Chain free

A stylish apartment with a balcony and underground parking set within a gated community close to the river near Kew Bridge. The property benefits from access to a private residents' gym and a concierge, and has been finished to the highest standard throughout. The apartment itself is accessed via a lift and consists of a stunning fully fitted kitchen, open plan reception room with wooden flooring and French windows leading out onto the balcony - which offers a peaceful view over the private courtyard towards the river. Further benefits include a modern family bathroom, dual-aspect master bedroom with an en suite bathroom, and two additional double bedrooms featuring built-in wardrobes.

Hyperion Tower is the premier building in the highly-desirable Kew Bridge West development in Brentford. This gated community offers luxurious living moments away from the picturesque Kew Bridge area. The property is situated within easy reach of a range of amenities including supermarkets, cafes and restaurants, as well as leisure facilities including Brentford Fountain Leisure Centre, two museums and the beautiful Kew Gardens. Commuters have access to a range of transport links including Kew Bridge Mainline station, Gunnersbury Underground station, and the A4/M4 for motorists.

For more information or to book a viewing, please contact:

**Chase Buchanan**

7 Odeon Parade, 480 London Road,  
Isleworth, Middlesex, TW7 4DE

| Energy Efficiency Rating |         | Environmental Impact (CO <sub>2</sub> ) Rating |         |
|--------------------------|---------|--|---------|
| Current                  | Desired | Current  | Desired |
| 75                       | 75      | 77   | 77      |

Care has been taken in the preparation of these particulars, however, their accuracy is not guaranteed and they do not form part of any contract. Measurements stated must be considered maximum.