

Jukes & Co

Estate Agents



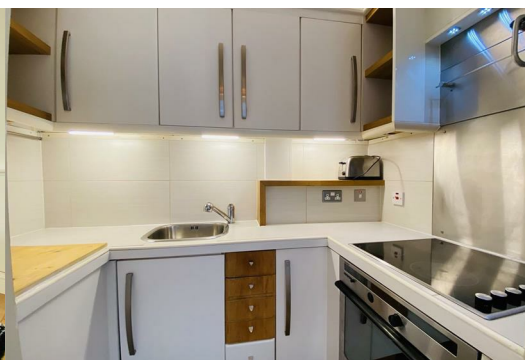
Gipsy Road

, London, SE27 9QY

£1,250



LIGHT, BRIGHT, SPACIOUS AND FULL OF CHARACTER. A 2 bedroom flat within walking distance of the lovely cafes and amenities of Crystal Palace Triangle and Gypsy Hill, Sydenham Hill and Crystal Palace Stations. This flat is unique, it has high ceilings, stripped pine floorboards, wooden window shutters, 2 double bedrooms with fitted wardrobes, white bathroom suite and a hand fitted kitchen. It is beautifully light and the rooms are spacious. Ideal for a couple who work from home or 2 sharers. It is part furnished but the landlord can be flexible. It also benefits from Norwood Park at the bottom of the road, so perfect for that "lockdown" exercise. AVAILABLE IMMEDIATELY.



RECEPTION 14'3 x 12'7 (4.34m x 3.84m)

Stripped wooden floorboards, sash windows with shutters, radiator, L-shape sofa, dining table and chairs, built-in cupboards and shelving, pine chest

KITCHEN

Electric hob and oven, fridge freezer, washing machine, microwave, stainless steel sink unit, wall and base cupboards

BEDROOM 13'5 x 9' (4.09m x 2.74m)

STRIPPED WOOD FLOORBOARDS. DOUBLE GLAZED SASH WINDOW WITH SHUTTERS, RADIATOR, SPOTLIGHTS, FITTED WARDROBES, PINE CHEST OF DRAWERS, FITTED SHELIVING, DOUBLE BED

BEDROOM / STUDY 10'8 x 8'9 (3.25m x 2.67m)

PINE STRIPPED FLOORBOARDS, RADIATOR, WINDOW WITH SHUTTER, WARDROBE

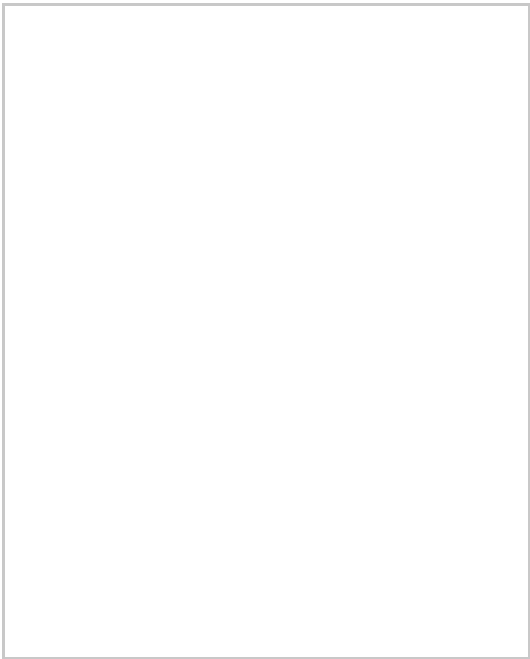
BATHROOM

WHITE BATH WITH SHOWER OVER, SHOWER SCREEN, WASH HAND BASIN WITHIN VANITY UNIT, LOW-FLUSH W.C, HEATED TOWEL RAIL, FROSTED WINDOW, TILED FLOOR

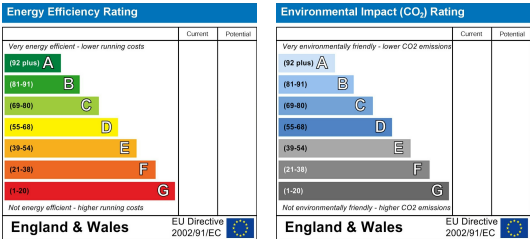
Area Map



Floor Plan



Energy Efficiency Graph



These particulars, whilst believed to be accurate are set out as a general outline only for guidance and do not constitute any part of an offer or contract. Intending purchasers should not rely on them as statements of representation of fact, but must satisfy themselves by inspection or otherwise as to their accuracy. No person in this firms employment has the authority to make or give any representation or warranty in respect of the property.