



57a Carlisle Road, Motherwell, Lanarkshire ML1 5LR
Offers over £210,000



****Price Reduced****

Empire Property are delighted to bring to the market a detached 5 bedroom 1 reception / 4 bedroom 2 reception property located on an excellent plot of land within a countryside setting.

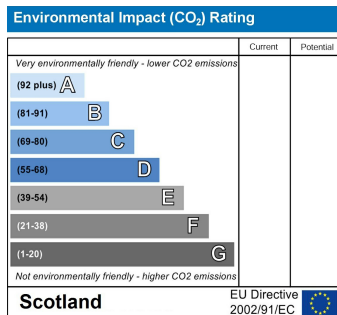
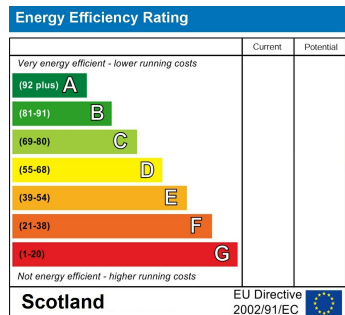
This family home offers the perfect balance between traditional features such as large rooms and high ceilings mixed with a freshly decorated modern internal finish.

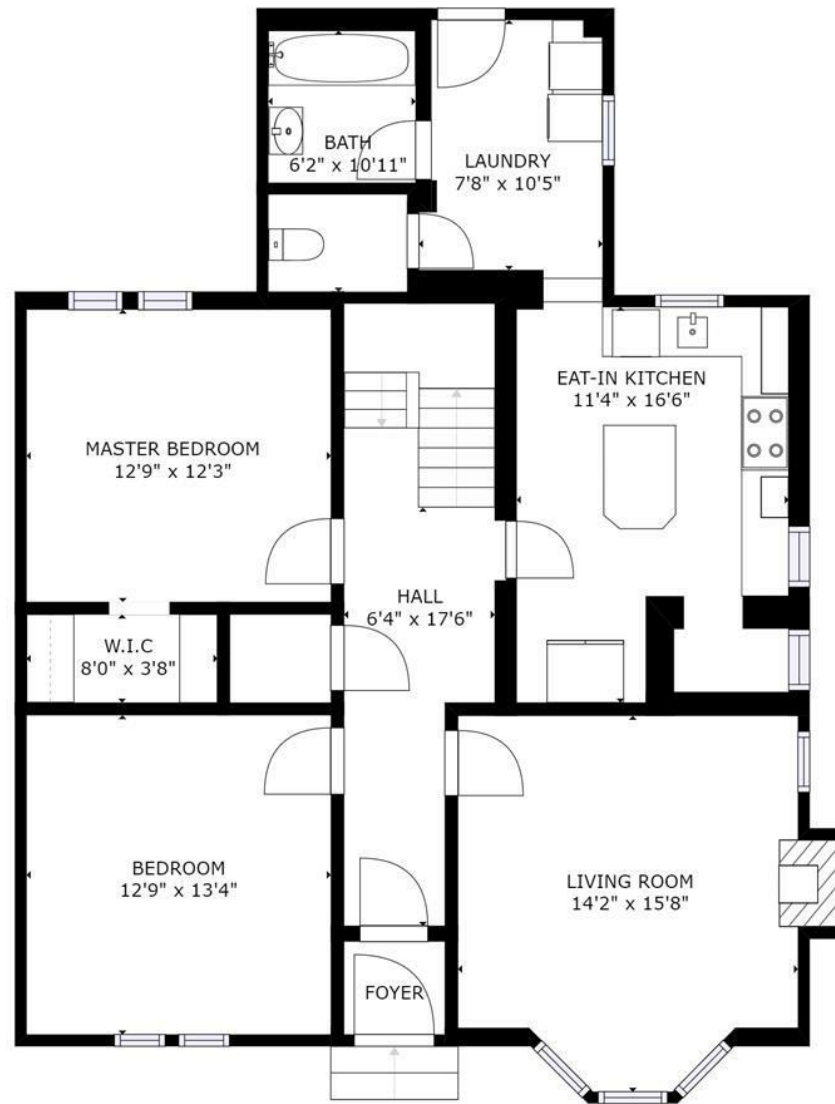
The flexible ground floor accommodation offers: a welcoming vestibule leading to a large open entrance hall with cloakroom; bright living room with bay window; large second reception room, which could be used for formal dining or living; double bedroom with walk in wardrobe, bathroom, a newly fitted kitchen with premium appliances and feature island, separate WC and utility with access to the large private back garden.

First floor of the property boasts two large double bedrooms and a third smaller room currently utilised as a study, there is a further large room that has yet to be constructed that could be utilised as large upstairs bathroom.

Features private sizeable gardens that house two large outbuildings

Early viewing is recommended!





GROSS INTERNAL AREA
 FLOOR 1: 1157 sq ft, FLOOR 2: 576 sq ft
 EXCLUDED AREAS: , REDUCED HEADROOM BELOW 1.5M: 13 sq ft
 TOTAL: 1733 sq ft
 SIZES AND DIMENSIONS ARE APPROXIMATE, ACTUAL MAY VARY.

FLOOR 1



2 Stewarton Street, Wishaw, Scotland, ML2 8AN

Tel: 01698 364100

contact@empire-property.co.uk www.empire-property.co.uk



