



The Priory Cottage, 201 Canterbury Road, Herne Bay, Kent, CT6 5UG



Just on the market ! hidden away from the main road with a front car parking space....detached bungalow /cottage style property ..located on the far east side of town ..ideal holiday home1 bedroom ..louge... kitchen...bathroom/wc...gas c/h ...double glazing ..garden area ...No forward chain FREEHOLD £245,000

£220,000 Freehold



Door To Lounge

10'10 x 16'4 (3.30m x 4.98m)

Double glazed window. Radiator. Power points. Television point. telephone point. Door to

Bedroom

11'96 x 10'8 (364.54m x 3.25m)

Radiator. Power points. Fitted carpet.

Kitchen (off Lounge)

11' x 7'10 (3.35m x 2.39m)

Stainless steel sink unit. Worktops. Wall cupboards. Wall mounted boiler for gas central heating and hot water. Electric oven and gas hob. Extractor hood. Radiator. Power points. Plumbed for washing machine. Door to lobby.

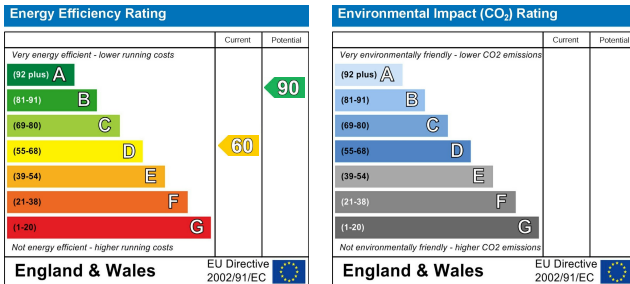
Bathroom/WC

7'8 x 5' (2.34m x 1.52m)

Panelled bath mixer taps. Pedestal wash handbasin. Radiator. Low level WC suite. Tiling.

Garden

Side access. Small garden area and patio.



Note:

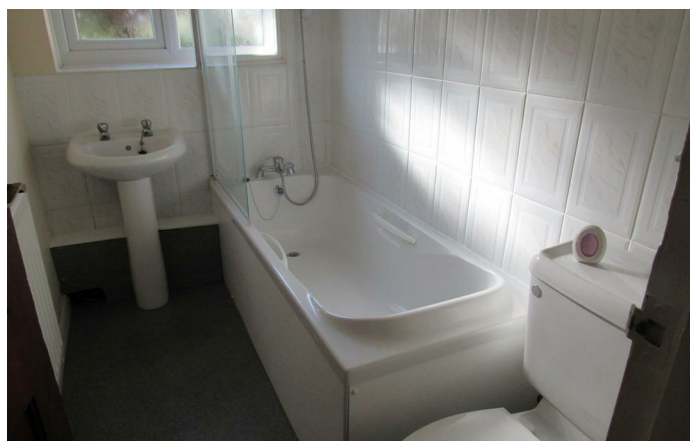
We have not tested the heating system, electrical appliances or the electric, gas and plumbing systems.

If travelling any distance to view this property it is advisable to check the availability and viewing times before hand. Wilbee & Son, as agents, cannot be held responsible for lost journey times and / or any expenses incurred.

These particulars are issued on the condition that any negotiations respecting the property are through Wilbee & Son. Every care is taken in giving particulars but should any error inadvertently occur or any property found to be previously withdrawn or disposed of, Wilbee & Son do not hold themselves responsible for any expenses or loss of time incurred. Neither the Vendor, nor the Partners or any employee of Wilbee & Son make or give any representation or warranty in relation to the property.

Oyster Financial Services is an appointed representative of Openwork Limited, which is authorised and regulated by the Financial Services Authority





WILBEE & SON



01227 374010

property@wilbeedson.co.uk

