



****AVAILABLE IMMEDIATELY****

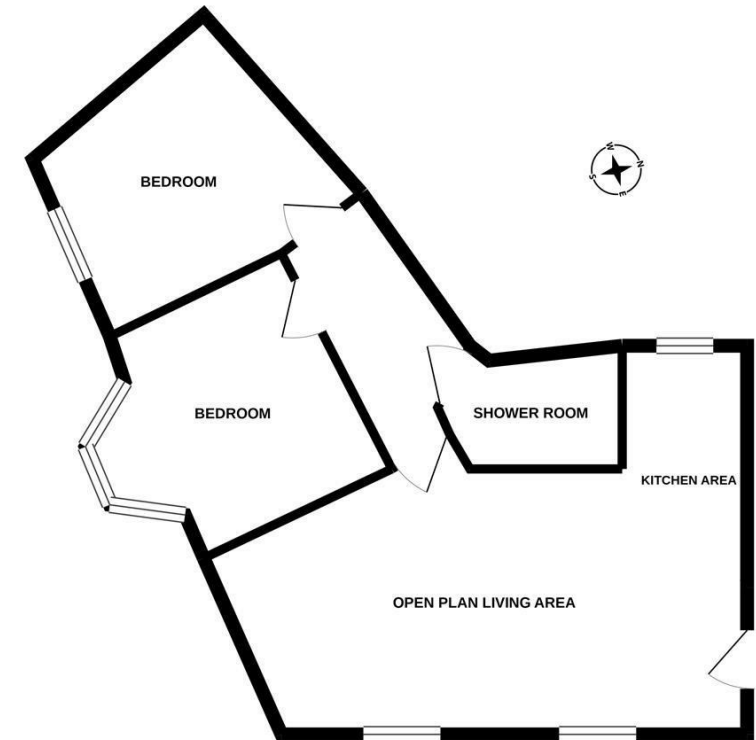
****FURNISHED****A fantastic basement conversion apartment, ideally located on Belle Grove Terrace, Spital Tongues. The apartment, close to Newcastle University and Newcastle's RVI Hospital is also perfectly placed to give access to the surrounding greenery as well as Newcastle City Centre itself.



The accommodation briefly comprises: Private entrance through to; open plan living area with tiled floor and open to kitchen with fitted wall and base units with work surfaces and spot lighting; rear hallway providing access to two double bedrooms and the shower room, complete with three piece suite. With electric heating and private front door, this Victorian conversion demands an early internal inspection!

Available Immediately | £650pcm | Furnished | Victorian Conversion Apartment | 551 Sq ft (51.1m²) | Basement Floor | Two Double Bedrooms | Private Entrance | Open Plan Living Area & Kitchen | Shower Room | Excellent Location | EPC Rating: D

BASEMENT
551 sq.ft. (51.1 sq.m.) approx.



TOTAL FLOOR AREA - 551 sq.ft. (51.1 sq.m.) approx.
Whilst every attempt has been made to ensure the accuracy of the floorplan contained here, measurements of doors, windows, rooms and any other items are approximate and no responsibility is taken for any error, omission or mis-statement. This plan is for illustrative purposes only and should be used as such by any prospective purchaser. The services, systems and appliances shown have not been tested and no guarantee as to their operability or efficiency can be given.
Made with Metropix ©2020

£650 PCM

Misrepresentation Act 1967. These particulars and the descriptions and measurements herein do not constitute representation and whilst every effort has been made to ensure accuracy, this cannot be guaranteed.

