

241 Deansgate, Manchester, Lancashire, M3 4EL

Tel: 0161 637 8336

Email: contactus@ascendproperties.com

www.ascendproperties.com

Ascend

Built on higher standards



Smithfield Square, 122 High Street, Manchester

£975 PCM

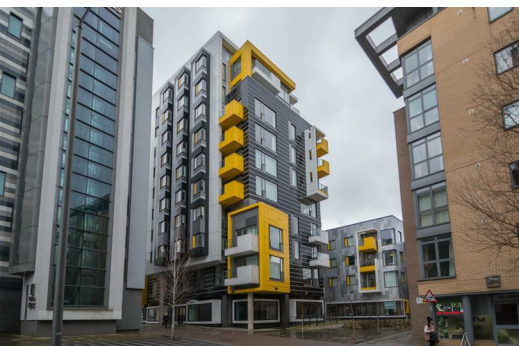
Situated in the highly sought-after Smithfield Square development in the Northern Quarter, this uber-stylish 2 bedroom apartment is perfectly placed to reach everything you need.

This is a truly stand-out building, with an ultra-modern black, white and yellow design. The interior is equally as stylish with sleek wooden flooring, huge floor to ceiling windows and top-notch fixtures and fittings. In the smart open-plan lounge/kitchen you'll find high-quality features such as Zanussi kitchen appliances and a dishwasher included. As an extra bonus, the lounge opens up onto your very own private, wrap-around balcony. Both bathrooms offer you a taste of luxury, with a slick contemporary design featuring tiled walls and Porcelanosa sinks, and in the bedrooms you'll benefit from spacious built-in wardrobes.

Around this unique development you'll discover a wide variety of cafes and restaurants right on your doorstep, including the popular Cat Cafe, Almost Famous and Manchester's renowned bakery, Home Sweet Home - whatever your taste, there's something to suit everyone! Shudehill Interchange Metrolink is just a couple of minutes' walk away too, so the delights of the city centre are right at your fingertips.

If you're interested in having a closer look, or have any questions, do get in touch. And just so you know, the pictures for this apartment are for marketing purposes only, so the internal fixtures, fittings and furnishings may vary.

Available Now



Living room and kitchen
18'11" x 14'9" (5.79 x 4.51)

A huge space with wooden flooring throughout and floor to ceiling windows flooding the apartment with natural light. You also get the bonus of your own private wrap around balcony with views over the Northern Quarter.

Master bedroom
15'1" x 10'7" (4.62 x 3.25)

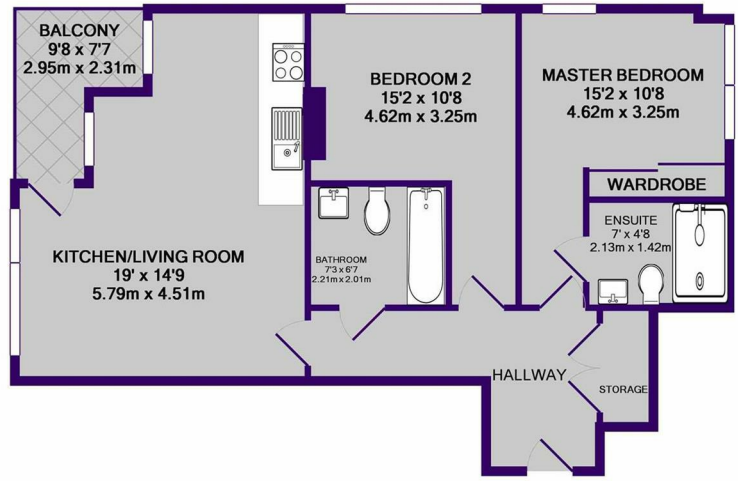
A great sized master bedroom with large windows plus fitted wardrobes and your own modern en suite.

Second bedroom
15'1" x 10'7" (4.62 x 3.25)

A great sized second bedroom with plenty of space for all bedroom furniture with the benefit of fitted wardrobes.

Master bathroom
7'3" x 6'7" (2.21 x 2.01)

A stunning bathroom with a 3 piece suite, large mirror and heated towel rail



TOTAL APPROX. FLOOR AREA 650 SQ.FT. (60.4 SQ.M.)
Whilst every attempt has been made to ensure the accuracy of the floor plan contained here, measurements of doors, windows, rooms and any other items are approximate and no responsibility is taken for any error, omission, or mis-statement. This plan is for illustrative purposes only and should be used as such by any prospective purchaser. The services, systems and appliances shown have not been tested and no guarantee as to their operability or efficiency can be given
Made with Metropix ©2017



| Energy Efficiency Rating | | Environmental Impact (CO ₂) Rating | |
|--------------------------|-----------|--|--------------------|
| Current | Potential | Current | Potential |
| Energy A | Energy B | CO ₂ 15 | CO ₂ 18 |
| Energy B | Energy C | CO ₂ 20 | CO ₂ 25 |
| Energy C | Energy D | CO ₂ 25 | CO ₂ 30 |
| Energy D | Energy E | CO ₂ 30 | CO ₂ 35 |
| Energy E | Energy F | CO ₂ 35 | CO ₂ 40 |
| Energy F | Energy G | CO ₂ 40 | CO ₂ 45 |
| Energy G | Energy H | CO ₂ 45 | CO ₂ 50 |
| Energy H | Energy I | CO ₂ 50 | CO ₂ 55 |