



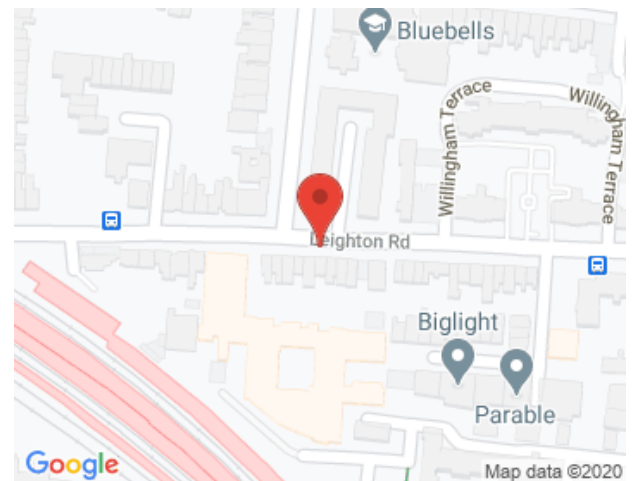
Leighton Road, Kentish Town, NW5 £495 per week, For long let



A spacious and well-appointed two-bedroom flat located on the raised ground floor of a smart modern development.

Conveniently arranged, the property offers 616 square feet of accommodation, comprising two good bedrooms, combined family bathroom/wc and a bright and spacious South facing 24ft x12ft open plan kitchen reception room. The flat has the additional benefit of its own private entrance and is chain free.

Leighton Road enjoys a central and convenient location, only a very short distance to the shops, bars and restaurants of Kentish Town with excellent transport options offering very easy access to the West End and City. The wide-open spaces of Hampstead Heath and





Energy Efficiency Rating		
	Current	Potential
<i>Very energy efficient - lower running costs</i>		
(92-100) A		
(81-91) B		
(69-80) C	78	78
(55-68) D		
(39-54) E		
(21-38) F		
(1-20) G		
<i>Not energy efficient - higher running costs</i>		
England, Scotland & Wales	EU Directive 2002/91/EC	

Leighton Road

Approximate Gross Internal Area = 57.2 sq m / 616 sq ft

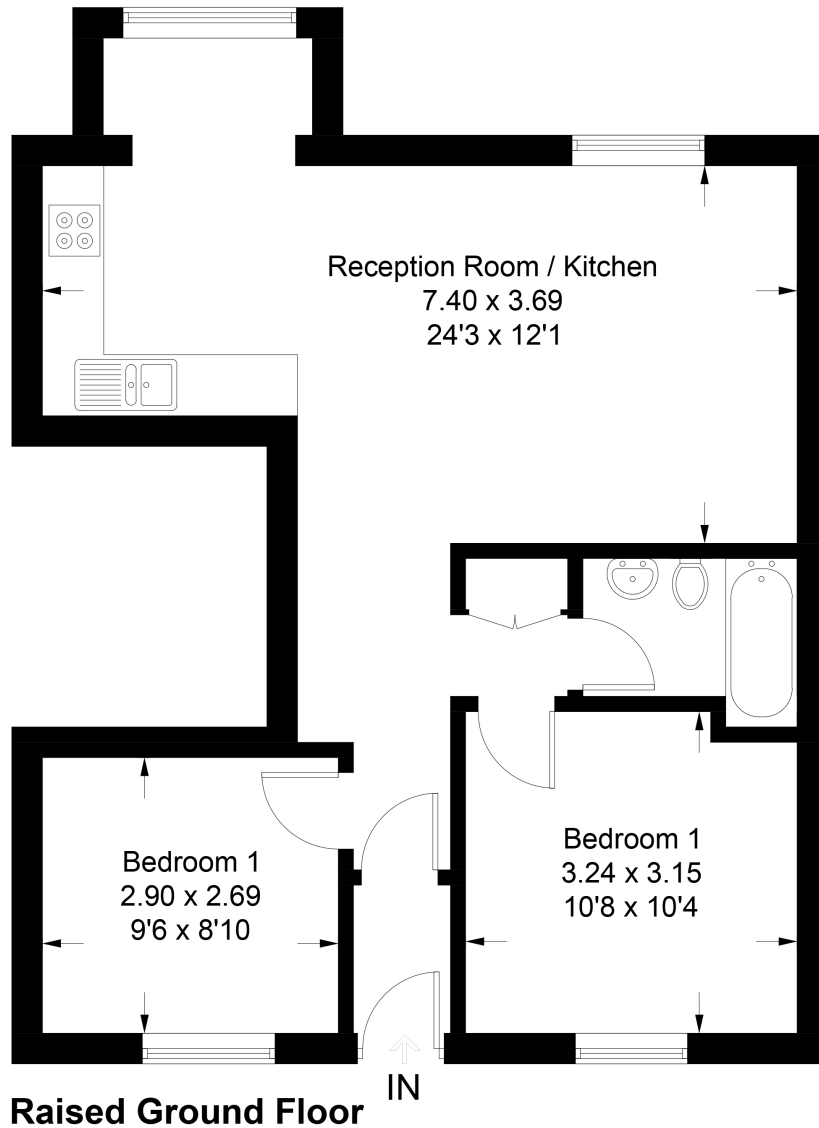


Illustration for identification purposes only,
measurements are approximate, not to scale. (ID695911)

Salter Rex give notice to anyone reading these particulars that: (i) these particulars do not constitute part of an offer or contract; (ii) these particulars and any pictures or plans represent the opinion of the author and are given in good faith for guidance only and must not be construed as statements of fact; (iii) nothing in the particulars shall be deemed a statement that the property is in good condition otherwise; we have not carried out a structural survey of the property and have not tested the services, appliances or specified fittings.

Long Description

A spacious and well-appointed two-bedroom flat located on the raised ground floor of a smart modern development.

Conveniently arranged, the property offers 616 square feet of accommodation, comprising two good bedrooms, combined family bathroom/wc and a bright and spacious South facing 24ft x12ft open plan kitchen reception room. The flat has the additional benefit of its own private entrance and is chain free. Leighton Road enjoys a central and convenient location, only a very short distance to the shops, bars and restaurants of Kentish Town with excellent transport options offering very easy access to the West End and City. The wide-open spaces of Hampstead Heath and only a short stroll from the apartment and there is a good range of outstanding state schools nearby.

Available 5th September